

130257

BOOK 172 PAGE 536

FILED FOR RECORD  
SKAMANIA CO. WASH  
BY Longview Fibre

JAN 16 9 46 AM '98

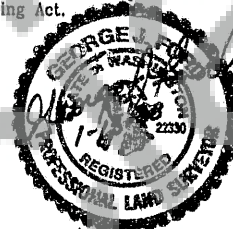
O. Lowry  
AUDITOR

GARY M. OLSON

## LAND CORNER RECORD

GRANTOR/ SURVEYOR/ PUBLIC OFFICER: This corner record correctly represents work performed by me or under my direction in conformance with the Surveying Recording Act.

COMPANY OR AGENCY: LONGVIEW FIBRE COMPANY

ADDRESS: PO BOX 667  
LONGVIEW, WA 98632GEORGE J. FORD, PLS  
NO. 22330  
EXP. 6-20-99

GRANTEE: PUBLIC

SEAL/SIGNATURE/DATE

LEGAL: SECTION 35

TWP: 3 NORTH

RGE: 6 EAST

CORNER CODE: V-17

ADDITIONAL IDENTIFIER: (e.g., BLM designation, street intersection, plat, block, lot, etc.)

COUNTY: SKAMANIA

WASHINGTON PLANE COORDINATES: N 140802.11

E 1245853.81

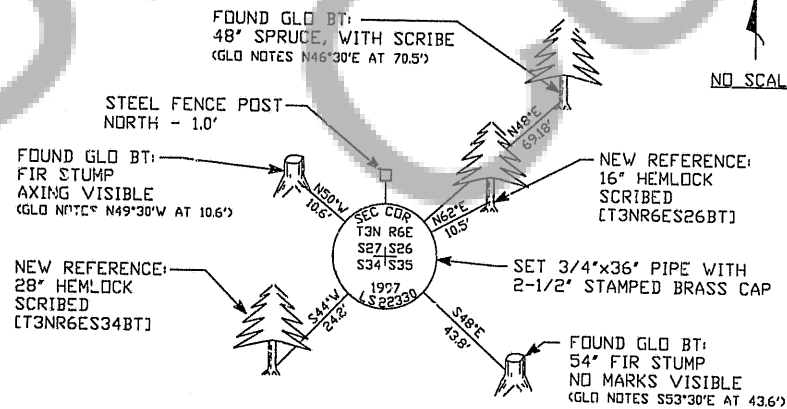
ORDER: 1

ZONE: SOUTH

DATUM (Date of adjustment): NAD 83 (1991)

CORNER INFORMATION: Provide: (1) Pertinent History, (2) Evidence Found, and (3) Corner Perpetuation Information (diagram the references; provide the date of work; and, if applicable, reference to a map of record and/or the field book/page no.) Additional space is available on the back.

(1) Pertinent History: Corner was originally established by Charles E. Sears in 1883 under contract no. 287. DNR found corner in 1947

(2) Evidence Found: Found 1" Pipe 4' high, found 3 original bearing trees  
Found BT's: 48" Spruce N48°E at 69.18 feet, scribe visible  
54" Fir stump, S48°E at 43.8 feet, no marks  
Fir stump, N50°W at 10.6 feet, axing visible, state tag dated 1965(3) Corner Perpetuation Information: Set 3/4"x36" pipe with 2-1/2" brass cap stamped to replace the found 1" pipe in the same location as the found pipe.  
New References: 16" Hemlock N62°E at 10.5 feet  
28" Hemlock S44°W at 24.2 feet  
Steel Fence post North at 1.0 feet

DATE OF WORK: 10-16-97, FIELD BOOK: 97-01, PAGE: 14

This form is in compliance with the intent of RCW 65.04.045 and prescribed by the Public Land Survey Office, Department of Natural Resources - 9/96

MARK THE CORNER LOCATION BELOW AND FILL IN THE CORNER CODE BLANK ON THE OTHER SIDE:

For corners at the intersection of two lines, the corner code is the alphanumeric coordinate that corresponds to the appropriate intersection of lines.

For corners that are only on one line, the corner code is the line designation and the related line segment; i.e., a corner on line 5 between "B" and "C" is designated BC-5.

For corners that are between lines, the corner code is both line segments; i.e., a corner in the SE 1/4 of the SE 1/4 of section 18 is designated MN 4-5.

	1	2	3	4	5	6	7	8	9	10	11	12	13	14	15	16	17	18	19	20	21	22	23	24	25
A																									
B																									
C																									
D																									
E																									
F																									
G																									
H																									
I																									
J																									
K																									
L																									
M																									
N																									
O																									
P																									
Q																									
R																									
S																									
T																									
U																									
V																									
W																									
X																									
Y																									
Z																									

RCW 58.09.060 (2) requires the following information on this form: an accurate description and location, in reference to the corner position, of all monuments and accessories (a) found at the corner and (b) placed or replaced at the corner; (c) basis of bearings used to describe or locate such monuments or accessories; and (d) corollary information that may be helpful to relocate or identify the corner position.

## SPACE FOR ADDITIONAL COMMENT:

## NOTES:

New References have a Longview Fibre Location Tag above the scribe and an 8" spike at bottom of scribe, all oriented toward monument. Bearings to references taken with hand compass having a declination of 21°e. distances measured to spike.

The G.L.D. distances do not intersect. A new monument was set to replace the found pipe in the same location. The distance to the found spruce does not coincide with G.L.D. The found pipe was apparently established from the other two found BT's, as they are closer in proximity and agree with the record.

Corner is approximately 70' southeast of an existing road on short ridge.