

130255

BOOK 172 PAGE 532

FILED FOR RECORD  
SKAMANIA, WASH  
BY Longview Fibre

JAN 16 8 45 AM '98

G. Lowry  
AUDITOR  
GARY M. OLSON

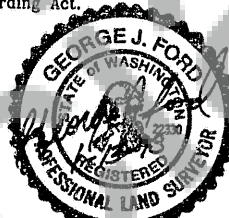
## LAND CORNER RECORD

GRANTOR/ SURVEYOR/ PUBLIC OFFICER: This corner record correctly represents work performed by me or under my direction in conformance with the Surveying Recording Act.

COMPANY OR AGENCY: LONGVIEW FIBRE COMPANY

ADDRESS: PO BOX 667  
LONGVIEW, WA 98632

GEORGE J. FORD, PLS  
NO. 22330  
EXP. 6-20-99



GRANTEE: PUBLIC

LEGAL: SECTION 36 TWP: 3 NORTH RGE: 6 EAST CORNER CODE: Z-25  
ADDITIONAL IDENTIFIER: (e.g., BLM designation, street intersection, plat, block, lot, etc.)

COUNTY: SKAMANIA

WASHINGTON PLANE COORDINATES: N: 135559.12 E: 1256153.23  
ORDER: 1 ZONE: SOUTH DATUM (Date of adjustment): NAD 83 (1991)

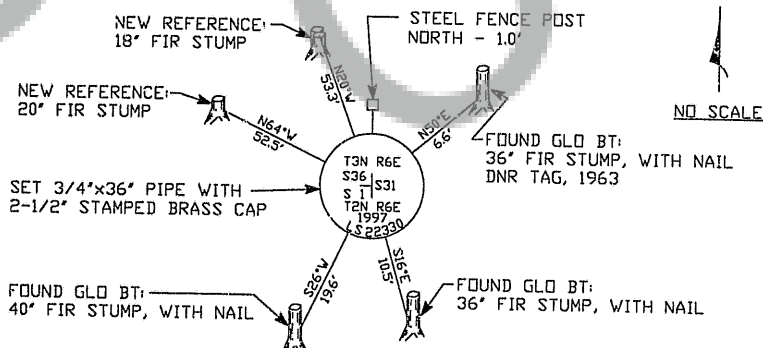
CORNER INFORMATION: Provide: (1) Pertinent History, (2) Evidence Found, and (3) Corner Perpetuation Information (diagram the references; provide the date of work; and, if applicable, reference to a map of record and/or the field book/page no.) Additional space is available on the back.

(1) Pertinent History: Corner was originally established by Charles E. Sears in 1883 under contract no. 287, DNR referenced corner in 1962 from 3 original bearing trees.

(2) Evidence Found: Found original bearing trees, now stumps  
Found BT's: 36' Fir stp N50°E at 6.6 feet, axe marks visible, DNR tag 1963  
36' Fir stp. S16°E at 10.5 feet, axe marks visible  
40' Fir stump S26°W at 19.6 feet, scribe visible

(3) Corner Perpetuation Information: Set 3/4"x36" pipe with 2-1/2" brass cap stamped  
New References: 18" Fir stump N20°W at 53.3 feet  
20" Fir stump N64°W at 52.5 feet  
Steel Fence post North at 1.0 feet

Noted  
Indexed, Dir  
Indirect  
Scribed  
Marked



DATE OF WORK: 12-01-97, FIELD BOOK: 97-01, PAGE: 12

This form is in compliance with the intent of RCW 65.04.045 and prescribed by the Public Land Survey Office, Department of Natural Resources - 9/96

**MARK THE CORNER LOCATION BELOW AND FILL IN THE CORNER CODE BLANK.** THE OTHER SIDE:  
For corners at the intersection of two lines, the corner code is the alphanumeric coordinate that corresponds to the appropriate intersection of lines.

For corners that are only on one line, the corner code is the line designation and the related line segment, i.e., a corner on line 5 between "B" and "C" is designated BC-5.

For corners that are between lines, the corner code is both line segments; i.e., a corner in the SE 1/4 of the SE 1/4 of section 18 is designated MN 4-5.

	1	2	3	4	5	6	7	8	9	10	11	12	13	14	15	16	17	18	19	20	21	22	23	24	25
A																									
B																									
C																									
D																									
E																									
F																									
G																									
H																									
J																									
K																									
L																									
M																									
N																									
O																									
P																									
Q																									
R																									
S																									
T																									
U																									
V																									
W																									
X																									
Y																									
Z																									

RCW 58.09.060 (2) requires the following information on this form: an accurate description and location, in reference to the corner position, of all monuments and accessories (a) found at the corner and (b) placed or replaced at the corner; (c) basis of bearings used to describe or locate such monuments or accessories; and (d) corollary information that may be helpful to relocate or identify the corner position.

SPACE FOR ADDITIONAL COMMENT:

**NOTES:**

New References have a longview Fibre Co. location tag and an 8" spike in the top of the stump. Bearings to references taken with hand compass having a declination of 21°E. Distances measured to spike.  
The corner is in the Bonneville Power Administration right of way of the McNary Ross Line. The corner is approximately 80 feet west of the power line maintenance road on a west aspect. The soil under the North East BT is sliding away from the stump and will probably destroy the monument in time.