

126687

BOOK 160 PAGE 740

FILED FOR RECORD
SKAMANIA CO. WASH
BY Longview Fibre Co.

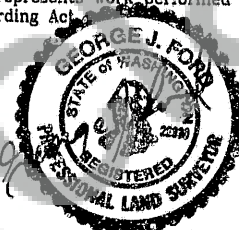
Nov 13 9 03 AM '96

O. Olson
AUDITOR
GARY M. OLSON

LAND CORNER RECORD

GRANTOR/ SURVEYOR/ PUBLIC OFFICER: This corner record correctly represents work performed by me or under my direction in conformance with the Surveying Recording Act.

COMPANY OR AGENCY: LONGVIEW FIBRE COMPANY

ADDRESS: PO BOX 667
LONGVIEW, WA 98632
GEORGE J. FORD, PLS
NO. 22330
EXP. 6-20-97

GRANTEE: PUBLIC

SEAL/SIGNATURE/DATE

LEGAL: SECTION 17

TWP: 2 NORTH

RGE: 6 EAST

CORNER CODE: N-9

ADDITIONAL IDENTIFIER: (e.g., BLM designation, street intersection, plat, block, lot, etc.)

COUNTY: SKAMANIA

WASHINGTON PLANE COORDINATES:

N/A

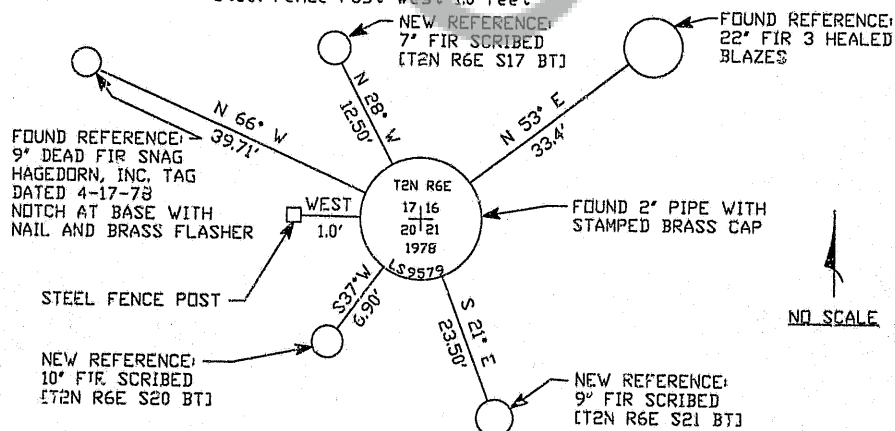
E: N/A

ORDER:

ZONE

DATUM (Date of adjustment):

CORNER INFORMATION: Provide: (1) Pertinent History, (2) Evidence Found, and (3) Corner Perpetuation Information (diagram the references; provide the date of work; and, if applicable, reference to a map of record and/or the field book/page no.) Additional space is available on the back.

(1) Pertinent History: Corner was originally established by Charles E. Sears 1883 under contract no. 287. The corner was determined Lost and reestablished by double proportion, see Survey by Hagedorn, Inc. book 1 page 165.(2) Evidence Found: Found 2" pipe with brass cap. Found references:
9" dead fir N66°W at 39.71 feet, Hagedorn Tag 4-17-78
22" fir N52°E at 33.4 feet, No tag three blazes
tree noted as 12" fir at 33.91' in 1978(3) Corner Perpetuation Information:New References: 7" Fir N26°W at 12.5 feet, scribed [T2NR6ES17 BT]
9" Fir S21°E at 23.50 feet, scribed [T2NR6WS21 BT]
10" Fir S37°W at 6.90 feet, scribed [T2NR6WS20 BT]
Steel Fence Post West 1.0 feet

References have a Longview Fibre Co. Tag above the scribe and an 8" spike at bottom of scribe, all oriented toward the monument. Bearings to BT's taken with hand compass. Distances measured to spike.

DATE OF WORK: 8-1-96, FIELD BOOK: 10-92, PAGE: 34

This form is in compliance with the intent of RCW 65.04.045 and prescribed by the Public Land Survey Office, Department of Natural Resources - 9/96

 Registered
 Indexed, Dir
 Indirect
 Filed
 Mailed

MARK THE CORNER LOCATION BELOW AND FILL IN THE CORNER CODE BLANK ON THE OTHER SIDE:
 For corners at the intersection of two lines, the corner code is the alphanumeric coordinate that corresponds to the appropriate intersection of lines.

For corners that are only on one line, the corner code is the line designation and the related line segment: i.e., a corner on line 5 between "B" and "C" is designated BC-5.

For corners that are between lines, the corner code is both line segments; i.e., a corner in the SE 1/4 of the SE 1/4 of section 18 is designated MN 4-5.

	1	2	3	4	5	6	7	8	9	10	11	12	13	14	15	16	17	18	19	20	21	22	23	24	25
A																									
B																									
C																									
D																									
E																									
F																									
G																									
H																									
J																									
K																									
L																									
M																									
N																									
O																									
P																									
Q																									
R																									
S																									
T																									
U																									
V																									
W																									
X																									
Y																									
Z																									

RCW 58.09.060 (2) requires the following information on this form: an accurate description and location, in reference to the corner position, of all monuments and accessories (a) found at the corner and (b) placed or replaced at the corner; (c) basis of bearings used to describe or locate such monuments or accessories; and (d) corollary information that may be helpful to relocate or identify the corner position.

SPACE FOR ADDITIONAL COMMENT:

Corner is 600 feet south of road.

TYPICAL CORNER REFERENCE AND MONUMENT

