

126686

BOOK 160 PAGE 738

FILED FOR RECORD
SKAMANIA CO. WASH
BY Longview Fibre

Nov 13 8 59 AM '96

GARY M. OLSON
AUDITOR

LAND CORNER RECORD

GRANTOR/ SURVEYOR/ PUBLIC OFFICER: This corner record correctly represents work performed by me or under my direction in conformance with the Surveying Recording Act.

COMPANY OR AGENCY: LONGVIEW FIBRE COMPANY

ADDRESS: PO BOX 667
LONGVIEW, WA 98632
GEORGE J. FORD, PLS
NO. 22330
EXP. 6-20-97

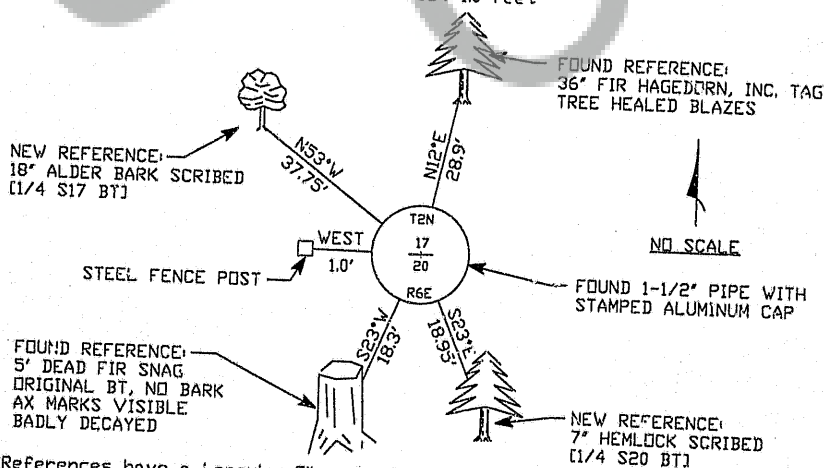
GRANTEE: PUBLIC

LEGAL: SECTION 17 TWP: 2 NORTH RGE: 6 EAST CORNER CODE: N-7
ADDITIONAL IDENTIFIER: (e.g., BLM designation, street intersection, plat, block, lot, etc.)

COUNTY: SKAMANIA

WASHINGTON PLANE COORDINATES: N: N/A E: N/A
ORDER: ZONE: DATUM (Date of adjustment):

CORNER INFORMATION: Provide: (1) Pertinent History, (2) Evidence Found, and (3) Corner Perpetuation Information (diagram the references; provide the date of work; and, if applicable, reference to a map of record and/or the field book/page no.) Additional space is available on the back.

(1) Pertinent History: Corner was originally established by Charles E. Sears 1883 under contract no. 287. The corner was perpetuated by Hagedorn, Inc., from found original 70" dead fir BT S20°W at 28 lks. See Survey Book 1 Page 165.(2) Evidence Found: Found 1-1/2" pipe with aluminum cap. Found references: 5' dead fir snag (no bark) S23°W at 18.3 feet, Original GLO BT 36" fir N12°E at 28.9 feet, Hagedorn, Inc. Tag three healed blazes(3) Corner Perpetuation Information:New References: 18" Alder N53°W at 37.75 feet, bark scribed [1/4 S17 BT]
7" Hemlock S23°E at 18.95 feet, scribed [1/4 S20 BT]
Steel Fence Post West 1.0 feet

References have a Longview Fibre Co. Tag above the scribe and an 8" spike at bottom of scribe, all oriented toward the monument. Bearings to BT's taken with hand compass. Distances measured to spike.

DATE OF WORK: 8-12-96 FIELD BOOK: 96-02 PAGE: 35

This form is in compliance with the intent of RCW 65.04.045 and prescribed by the Public Land Survey Office, Department of Natural Resources - 9/96

| | |
|--------------|---|
| Registered | ✓ |
| Indexed, Dir | ✓ |
| Indirect | ✓ |
| Filed | ✓ |
| Mailed | ✓ |

MARK THE CORNER LOCATION BELOW AND FILL IN THE CORNER CODE BLANK ON THE OTHER SIDE:

For corners at the intersection of two lines, the corner code is the alphanumeric coordinate that corresponds to the appropriate intersection of lines.

For corners that are only on one line, the corner code is the line designation and the related line segment; i.e., a corner on line 5 between "B" and "C" is designated BC-5.

For corners that are between lines, the corner code is both line segments; i.e., a corner in the SE 1/4 of the SE 1/4 of section 18 is designated MN 4-5.

| | | | | | | | | | | | | | | | | | | | | | | | | | |
|---|---|---|---|---|---|---|---|---|---|----|----|----|----|----|----|----|----|----|----|----|----|----|----|----|----|
| | 1 | 2 | 3 | 4 | 5 | 6 | 7 | 8 | 9 | 10 | 11 | 12 | 13 | 14 | 15 | 16 | 17 | 18 | 19 | 20 | 21 | 22 | 23 | 24 | 25 |
| A | | | | | | | | | | | | | | | | | | | | | | | | | |
| B | | | | | | | | | | | | | | | | | | | | | | | | | |
| C | | | | | | | | | | | | | | | | | | | | | | | | | |
| D | | | | | | | | | | | | | | | | | | | | | | | | | |
| E | | | | | | | | | | | | | | | | | | | | | | | | | |
| F | | | | | | | | | | | | | | | | | | | | | | | | | |
| G | | | | | | | | | | | | | | | | | | | | | | | | | |
| H | | | | | | | | | | | | | | | | | | | | | | | | | |
| I | | | | | | | | | | | | | | | | | | | | | | | | | |
| J | | | | | | | | | | | | | | | | | | | | | | | | | |
| K | | | | | | | | | | | | | | | | | | | | | | | | | |
| L | | | | | | | | | | | | | | | | | | | | | | | | | |
| M | | | | | | | | | | | | | | | | | | | | | | | | | |
| N | | | | | | | | | | | | | | | | | | | | | | | | | |
| O | | | | | | | | | | | | | | | | | | | | | | | | | |
| P | | | | | | | | | | | | | | | | | | | | | | | | | |
| Q | | | | | | | | | | | | | | | | | | | | | | | | | |
| R | | | | | | | | | | | | | | | | | | | | | | | | | |
| S | | | | | | | | | | | | | | | | | | | | | | | | | |
| T | | | | | | | | | | | | | | | | | | | | | | | | | |
| U | | | | | | | | | | | | | | | | | | | | | | | | | |
| V | | | | | | | | | | | | | | | | | | | | | | | | | |
| W | | | | | | | | | | | | | | | | | | | | | | | | | |
| X | | | | | | | | | | | | | | | | | | | | | | | | | |
| Y | | | | | | | | | | | | | | | | | | | | | | | | | |
| Z | | | | | | | | | | | | | | | | | | | | | | | | | |

RCW 58.09.060 (2) requires the following information on this form: an accurate description, and location, in reference to the corner position, of all monuments and accessories (a) found at the corner and (b) placed or replaced at the corner; (c) basis of bearings used to describe or locate such monuments or accessories; and (d) corollary information that may be helpful to relocate or identify the corner position.

SPACE FOR ADDITIONAL COMMENT:

CORNER IS 372 FEET WEST OF OLD GRADE AND 37 FEET WEST OF SMALL CREEK
COURSE S25°E

**TYPICAL CORNER
REFERENCE AND
MONUMENT**

