

121906
LAND CORNER RECORD

(THIS FORM PRESCRIBED BY THE PUBLIC LAND SURVEY OFFICE,
DEPARTMENT OF NATURAL RESOURCES, PURSUANT TO RCW 58.02.
ALPHA-NUMERIC INDEX DIAGRAM ON THE BACK.)

BOOK 148- PAGE 928

FILED FOR RECORD
SKAMANIA CO. WASH
BY *Hagedorn, Inc.*

MAR 27 8 50 AM '95

P. Olson
AUDITOR

GARY M. OLSON

CORNER INDEXING INFORMATION:

TWP 2N RGE 5E CORNER CODE V-11

(Willamette Meridian)

(See instructions on back of LCR)

ADDITIONAL IDENTIFIER: (e.g., BLM designation for the corner, street, intersection,
plot name, block, lot, etc.)

NORTH 1/4 SECTION 33

COUNTY: SKAMANIA

AUDITOR'S USE

LAND SURVEYOR INFORMATION: (or Public Officer as per RCW 58.02.060)

This corner record correctly represents work performed by me or under my direction in conformance
with the Survey Recording Act.

COMPANY OR AGENCY: HAGEDORN, INC.

ADDRESS: 1924 BROADWAY, SUITE B
VANCOUVER, WA 98663

WASHINGTON PLANE COORDINATES: N: _____ E: _____

SEAL/SIGNATURE/DATE

ORDER: _____ ZONE: _____ DATUM (Date of adjustment): _____

CORNER INFORMATION: Use this space below to provide the following information regarding the corner:

(1) Pertinent Corner History, (2) Evidence Found at the Corner, and (3) Corner Perpetuation Information. Please title and number the parts
of your discussion accordingly. If additional space is needed use the back. (For (3), diagram the references. Also, provide the cross-reference to a
map of record, if applicable, the surveyor's field book no./page no., and the date of work.) (See the back of this form for the requirements of the
Survey Recording Act.)

(1) PERTINENT CORNER HISTORY:

THIS CORNER WAS ORIGINALLY ESTABLISHED BY U.S. DEPUTY SURVEYORS LEWIS VAN
FLEET AND JOHN NEWSOM UNDER CONTRACT NO. 47 IN MAY, 1859. THEY SET A POST FOR THE
CORNER MONUMENT AND MARKED THE FOLLOWING ACCESSORIES:

24" FIR - S 39° E, 216 LINKS (142.8 FT.)

6" FIR - N 14° W, 54 LINKS (35.6 FT.)

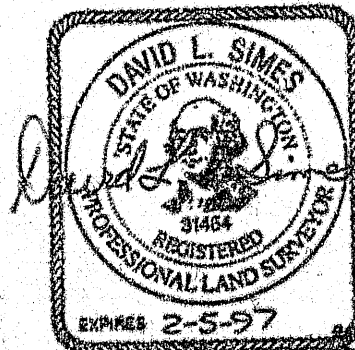
OLSON ENGINEERING IN SURVEY VOLUME 1, PAGE 234 (1980) FOUND THE ORIGINAL
BEARING TREES, SET A 3/4 INCH IRON PIPE WITH BRASS CAP FOR THE CORNER MONUMENT AND
PLACED THE FOLLOWING REFERENCES:

RAILROAD SPIKE IN THE BASE OF AN 18" FIR - S 50° E, (8.67 FT.)

RAILROAD SPIKE IN THE BASE OF A 24" FIR - S 89° W, (32.10 FT.)

(2) EVIDENCE FOUND AT THE CORNER:

HAGEDORN, INC. VISITED THIS CORNER IN DECEMBER, 1994. WE FOUND THAT THE
CORNER MONUMENT HAD BEEN OBLITERATED. THE REFERENCES PLACED BY OLSON
ENGINEERING IN 1980 WERE FOUND UNDISTURBED.



Indirect ☒
Firmed ☒
Mailed ☒

DATE OF FORM: 2/82

HAGEDORN, INC.

REGISTERED LAND SURVEYORS

1924 Broadway, Suite B, Vancouver, WA 98663
(206) 806-4428 (509) 253-4775

MARK THE CORNER LOCATION ON THE DIAGRAM BELOW AND FILL IN THE CORNER CODE BLANK ON THE OTHER SIDE:

- (1) For corners located at the intersection of two lines (Section corners, quarter corners and adjacent corners):
 - (a) The corner code is the alpha-numeric coordinate from the diagram below that corresponds to the appropriate intersection of lines.
- (2) For corners that are not located at the intersection of two lines (Meander corners, D.C.'s, H.E.B.'s, reservation boundaries, mining claims, etc.):
 - (a) For corners that are on one line only the corner code is the line designation and the related line segment; i.e., a corner on line 5 between "B" and "C" is designated BC-5.
 - (b) For corners that are between lines the corner code is both line segments; i.e., a corner in the SE1/4 of the SE1/4 of Section 18 is designated MN-4-5.

BOOK 748 PAGE 929

	1	2	3	4	5	6	7	8	9	10	11	12	13	14	15	16	17	18	19	20	21	22	23	24	25
A																									
B																									
C																									
D																									
E																									
F																									
G																									
H																									
I																									
J																									
K																									
L																									
M																									
N																									
O																									
P																									
Q																									
R																									
S																									
T																									
U																									
V																									
W																									
X																									
Y																									
Z																									

RCW 58.09.050 (2) requires the following information on this form: an accurate description and location, in reference to the corner position, of all monuments and accessories (a) found at the corner and (b) placed or replaced at the corner; (c) basis of bearings used to describe or locate such monuments or accessories; and (d) corollary information that may be helpful to relocate or identify the corner position.

(3) CORNER PERPETUATION INFORMATION:

WE USED THE REFERENCE POINTS ESTABLISHED BY OLSON ENGINEERING IN 1980 TO RE-ESTABLISH THE CORNER, AND PLACED A 1" IRON PIPE WITH A 2-1/2" BRASS CAP STAMPED AS SHOWN FOR THE CORNER MONUMENT.

