

120647 LAND CORNER RECORD

BOOK 146 PAGE 62

FILED FOR RECORD
SKAMANIA CO. WASH
BY Robert G. Dean

(THIS FORM PRESCRIBED BY THE PUBLIC LAND SURVEY OFFICE, DEPARTMENT OF NATURAL RESOURCES, PURSUANT TO RCW 58.09. ALPHA-NUMERIC INDEX DIAGRAM ON THE BACK.)

CORNER INDEXING INFORMATION:

TWP 2N RGE 6E CORNER CODE P-9
(Willamette Meridian) (See instructions on back of LCR)

ADDITIONAL IDENTIFIER: (e.g., BLM designation for the corner, street intersection, plat name, block, lot, etc.)

WEST QUARTER CORNER SECTION 21

SEP 27 3 54 PM '94

P. Olsson
AUDITOR
GARY M. OLSON

COUNTY: SKAMANIA

AUDITOR'S USE

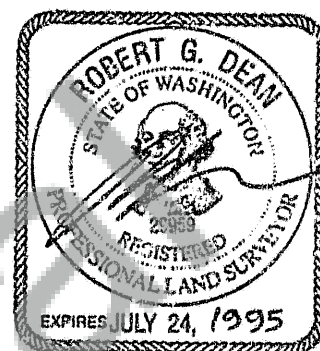
LAND SURVEYOR INFORMATION: (or Public Officer as per RCW 58.09.090)

This corner record correctly represents work performed by me or under my direction in conformance with the Survey Recording Act.

COMPANY OR AGENCY: DEAN SURVEYING

ADDRESS: ROBERT G. DEAN
7101 NE 74TH AVE.
VANCOUVER, WA 98662

Survey for Jim Combelic, Job #94091, in NE $\frac{1}{4}$ Sec. 21,
T 2 N, R 6 E, WM., Field Book Page 7



WASHINGTON PLANE COORDINATES: N: _____ E: _____

SEAL/SIGNATURE/DATE
9/27/94

ORDER: _____ ZONE: _____ DATUM (Date of adjustment): _____

CORNER INFORMATION: Use the space below to provide the following information regarding the corner: (1) Pertinent Corner History, (2) Evidence Found at the Corner, and (3) Corner Perpetuation Information. Please title and number the parts of your discussion accordingly. If additional space is needed use the back. (For (3), diagram the references. Also, provide the cross-reference to a map of record, if applicable, the surveyor's field book no./page no., and the date of work.) (See the back of this form for the requirements of the Survey Recording Act.)

(1) Pertinent Corner History:

1883 G.L.O., Charles E. Sears, set 3' long x 3" square x 24" deep post, from which:

5" Vine Maple N 87° E 7 lks (4.62');
10" Fir N 55° W 29 lks (19.14').

3-9-70, Washington Department of Game, Donald W. Pitzler, Survey of Nellie Corser Natural Wildlife Area, in SE $\frac{1}{4}$ Section 20, Skamania County Engineer's drawer 34-6.2-20.1, Fish and Wildlife Field Book Misc. 43 Page 38, Found old stump with face, Set 1 $\frac{1}{2}$ " Pipe w/cap.

November 1973, Wayne Main, Survey Book 1 Page 5, Found Brass Cap.

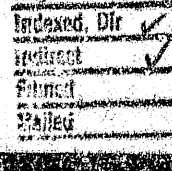
May 1978, William F. Hagedorn, Survey Book 1 Page 165, Calculated Corner by single proportionate measurement, Found Iron Pipe with Aluminum Cap S 58° 57' E (grid bearing) 73.23' from corner location.

(2) Evidence Found at the Corner:

September 14, 1994 I find a 1 $\frac{1}{2}$ " iron pipe, 12" high, with aluminum plug marked "20 | 21". At approximately N 59° W 20.5' from the pipe I find a very rotted 20" snag with axed face 36" high and 9" from the center of the remaining portion of the snag. I saw through the face and by observing the ring pattern discover that the face is on the inside of a once hollow tree and 5" behind the center of the tree. I dig around the pipe and find no evidence of a post hole. I cut into several other stumps but find no evidence of markings. I conclude that the corner was lost when reestablished by Hagedorn.

(3) Corner Perpetuation Information:

I did not measure to this corner but calculated its location at N 60° 05' W (solar basis) 73.23' from the calculated location of the pipe according to surveys in Book 1 Pages 5 & 165.



MARK THE CORNER LOCATION ON THE DIAGRAM BELOW AND FILL IN THE CORNER CODE BLANK ON THE OTHER SIDE:

(1) For corners located at the intersection of two lines (Section corners, quarter corners and sixteenth corners):

(a) The corner code is the alpha-numeric coordinate from the diagram below that corresponds to the appropriate intersection of lines.

(2) For corners that are not located at the intersection of two lines (Meander corners, DLC's, HES's, reservation boundaries, mining claims, etc.):

(a) For corners that are on one line only the corner code is the line designation and the related line segment; i.e., a corner on line 5 between "B" and "C" is designated BC-5.

(b) For corners that are between lines the corner code is both line segments; i.e., a corner in the SE1/4 of the SE1/4 of section 18 is designated MN-4-5.

1 2 3 4 5 6 7 8 9 10 11 12 13 14 15 16 17 18 19 20 21 22 23 24 25

A																								
B																								
C		6				5				4				3				2					1	
D																								
E																								
F																								
G		7				8				9				10				11				12		
H																								
J																								
K																								
L		18				17				16				15				14				13		
M																								
N																								
O																								
P		19				20				21				22				23				24		
Q																								
R																								
S																								
T		30				29				28				27				26				25		
U																								
V																								
W																								
X		31				32				33				34				35				36		
Y																								
Z																								

RCW 50.09.060 (2) requires the following information on this form: an accurate description and location, in reference to the corner position, of all monuments and accessories (a) found at the corner and (b) placed or replaced at the corner; (c) basis of bearings used to describe or locate such monuments or accessories; and (d) corollary information that may be helpful to relocate or identify the corner position.

SPACE FOR ADDITIONAL COMMENT: