

112223

BOOK 6/5 PAGE 40

HAMPSTUR CORPORATION  
1910 Douglas A3  
LONGVIEW, WASHINGTON 98632

## LAND CORNER RECORD

T 6 N, R 5 E., W.M. \_\_\_\_\_ SKAMANIA County  
Segregated Surveys: Corner Code No. C-13  
Name: 1/4 corner between S.4/S.3 Corner No.: \_\_\_\_\_  
DLC, HES, T/act, Mining Claim, Indian Allotment, Federal Reserve, Townsite.

## 1. History of Corner Establishment and Subsequent Restoration:

This corner was originally set by the GLO in 1909, by Frank Rhodes, at which time he set a sandstone for the corner and scribed 2 dead Firs. In August of 1991, HAMPSTUR CORP. performed an extensive search for this corner, using the record GLO calls for reference. After 14 crew hours of searching, the original stone was found buried 4" below the surface. The corner was then remonumented, as shown in the diagram below, and the original stone was placed on the East side of the new corner. This corner was located as part of a survey for PLYM CREEK TIMBER COMPANY, under the direction of C. Hampton, LS #18,087.

## 2. Description of Evidence Found:

GLO CORNER: 14"x10"x8" sandstone marked with a "1/4"; found a 14"x10"x4" sandstone with a clearly scribed "1/4" buried 4" below the ground surface. The search position was determined from the GLO calls to the North, which fit nearly perfect.

## GLO BT's:

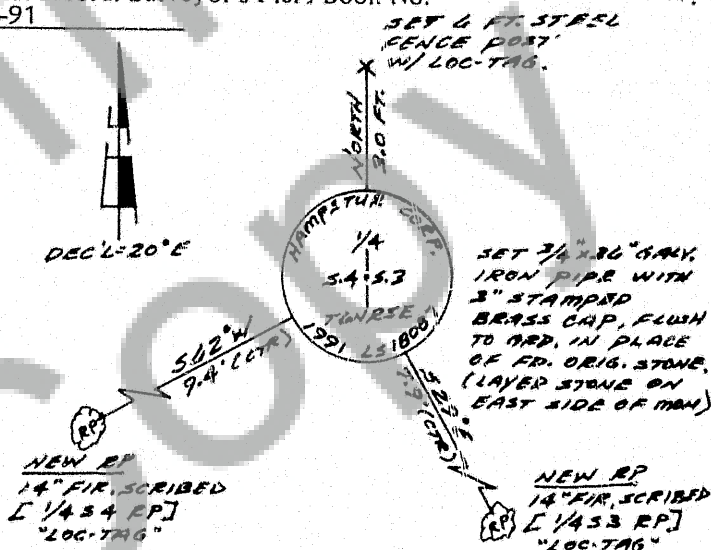
- 14" dead Fir, N68°E--16 lks.; Gone-found no evidence remaining
- 11" dead Fir, S50°W--21 lks.; Gone-found no evidence remaining

Found no other evidence of this corner or any subsequent restorations.

## 3. Describe Monument, Accessories and Corollary Data to Perpetuate this Corner Location. Diagram corner and indicate meridian and reference to map of record. Surveyor's Field Book No. PS-127 Page No. 12 Date of work 8-13-91

## LOCATION:

- on a gentle West slope, on main divide ridge between the Lewis River and Soixon creek.
- 160 ft. South of "top of steep ascent" call (GLO record = 162.36 ft).
- approx. 400 ft. North of old trail on main divide.



Washington Plane Coordinates: \_\_\_\_\_ Zone, Y \_\_\_\_\_ X \_\_\_\_\_  
Order Accuracy. Derived From: \_\_\_\_\_  
Pin Pointed on Photo No. \_\_\_\_\_ Date \_\_\_\_\_ Located at \_\_\_\_\_

## SURVEYOR'S CERTIFICATE

This corner record correctly represents work performed by me or under my direction in compliance with the provisions of Chapter 50, Laws of 1973. Date August 16, 1991

Signature Calvin J. Hampton, S

LS #18,087  
Certificate No



## AUDITOR'S CERTIFICATE

Filed for record this 4th day of October 19 91 at 4:18 P. M. in Book 6/5 of Monuments at page 40 at the request of Hampstar Corp.

Shirley M. Olson by P. Lowry  
County Auditor

Form prescribed by Bureau of Surveys and Maps pursuant to the provisions of Section 5 (2), Chapter 50, Laws of 1973.

Reviewed p  
and x.d. p  
Indexed p  
Filed p  
Mailed p