

State of Washington
DEPARTMENT OF NATURAL RESOURCES
CENTRAL REGION
LAND CORNER RECORD
Skamania County

CS 1/16
Sec. 34

T 3 N, R 7E, W.M.

Segregated Surveys:
Name: n/a

Corner Code No. Y-15

Corner Number: n/a

1. History of Corner Establishment and Subsequent Restoration:

This corner was set by DNR in 1979 during their subdivision of Section 34. This survey is on file with the Skamania County Engineer and at the Public Land Survey Office in Olympia. A concrete monument was set at the calculated position and 3 RP's established.

2. Description of Evidence Found:

All three RP's, with the nails in each intact were found. The concrete monument was broken off and was found 25-30 feet NW of where it should have been.

3. Describe Monument, Accessories and Corollary Data to Perpetuate this Corner Location. Diagram corner and indicate meridian and reference to map of record. Surveyor's Field Book No. 600.31, Page No. 71. Date of work 10-18-90.

An aluminum monument with a stamped cap was set at the point of intersection of the distances noted in the 1979 description of this corner, which is in Field Book 600.18, Page 12. When digging the hole, the base of the concrete monument was found.

This corner is shown on Work Map No. 324 and Final Map No. 353.

See sketch on back.

Washington Plane Coordinates:

Derived from: .

Pin Pointed on Photo No. _____, Date _____, Located at _____

SURVEYOR'S CERTIFICATE

This corner record correctly represents work performed by me or under my direction in compliance with the provisions of Chapter 50, Laws of 1973.
Date: October 29, 1990.

Signature H. Thomas Land

21490
Certificate No.



[Seal]

AUDITOR'S CERTIFICATE

Filed for record this 1st day of November 1990 at 1:35 P.M.
In Book 3/7 of Monuments at page 63 ac the request
of Washington State Department of Natural Resources.

Mary M. Olson
County Auditor

Registered EE
Indexed, Dir EE
Indexed
Filed 11-5-90
Watched

C.S. 1/4 Sec 34 T3N, R7E

NOT SET BY G.

Set by D.N.R. survey of
Sec 34 3N-7E 1979

Found 3 R.P.s standing & corr.
mon. destroyed

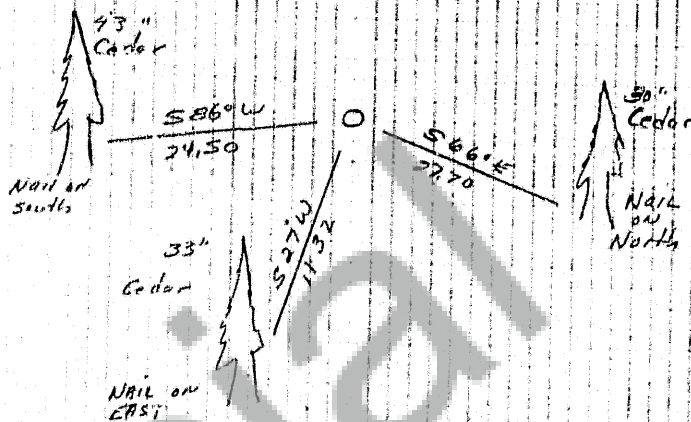
10-8-90

Sec BK 600.31A
R. 1-7 For TRAV
R. offsets to
South

PC LAIRD
PC LORIAM
GORDON
Mc HOSMER
R. Bright

01171
600.31

T3N
R7E
1990



Set D.N.R. ALUM. & MNG MON WITH
CAP 4" ABOVE GROUND from 3 R.P.s

Post 3' N

BOOK 3/7 PAGE 64

