

110352

BOOK 3/9 PAGE 46

State of Washington
DEPARTMENT OF NATURAL RESOURCES
CENTRAL REGION
LAND CORNER RECORD
Skamania County

21 22
28 27

T 3 N, R 9E, W.M.
Segregated Surveys:
Name: n/a

Corner Code No. R-13

Corner Number: n/a

1. History of Corner Establishment and Subsequent Restoration:

Originally established by GLO in 1880 with a post and 4 BT's. Subsequently restored by DNR employees Lawson and Smith on 6-27-69, with a 4X4 concrete monument with stamped brass cap.

2. Description of Evidence Found:

Above described concrete monument.
Fir stub at N17E 23.0 feet, no scribe.
Fir stub at N67W 15.3 feet, no scribe.
Fir stub at S44W 17.9 feet, no scribe.

FILED
BY
AC 77
NOV 1 1 28 PM '90
E. Mayfield
CLERK OF COUNTY

3. Describe Monument, Accessories and Corollary Data to Perpetuate this Corner Location. Diagram corner and indicate meridian and reference to map of record. Surveyor's Field Book No. 600.31, Page No. 77. Date of work 8-29-90.

Corner is a DNR concrete monument. Monument has a significant list to it, however the distances from the 2 1969 RP's fit, therefore the monument was not reset plumb.

See reverse side for sketch.

Washington Plane Coordinates: Not tied.

Derived from:

Pin Pointed on Photo No. _____, Date _____, Located at _____.

SURVEYOR'S CERTIFICATE

[Seal]

This corner record correctly represents work performed by me or under my direction in compliance with the provisions of Chapter 50, Laws of 1973.
Date: October 29, 1990.

H. Thomas Laird Jr.
Signature

21490
Certificate No.



AUDITOR'S CERTIFICATE

Filed for record this 1st day of November 1990 at 1:28 P.M.
In Book 3/9 of Monuments at page 46 at the request
of Washington State Department of Natural Resources.

Shirley M. Olson
County Auditor

Received E
Recorded E
Index
Filed 11-5-90
Mailed

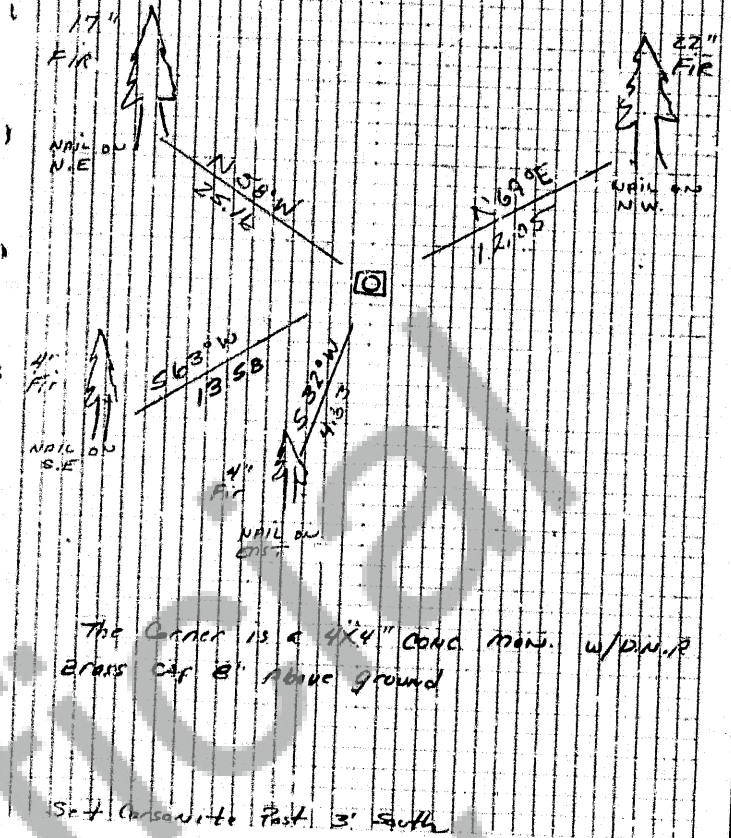
22 T3N R9E
27

G.L.O. of 1880, L.D.W. Shelton.
0.00 CH, Set Maple Post from which
24" Fir N17E 33L
24" Fir N67W 23L
30" Fir S44W 27L
8" Maple S70E 19L
10.50 CH - Trail to Weidlers Mill NWSE.

Gordon
Hosmer
Bright
600. 31
77

8-27-90

T3N R9E
S21.122
S28.127
1949



D.N.R. CONC. MON Set 6-27-69

by LAWSON & Smith, D.N.R.

Employees, from G.L.O. B.T.

190 Gordon, Hosmer, Bright Ad.

D.N.R. MON as set by above from

G.L.O. EVIDENCE, ON N.E. R.P.

stands, a 22" Fir.

Mon has a significant list to the

East but R.P. distances from 2 tags

tell on Cap & Mon is solid so I

did not stand Mon. Plumb

N17E 23.0 STUB. S44W 17.9 STUB

N67W 15.3 STUB. NO scribe

N30W 9' to 15" Fir W/Fall w R AXE SCRIBE
FACES COR

BOOK 3/9 PAGE 47

