



106184

BOOK 7/6 PAGE 66

HAMPSTUR CORPORATION
1010 Douglas A3
LONGVIEW, WASHINGTON 98632

LAND CORNER RECORD

T. 7 N.R. 6 E., W.M. SKAMANIA County
Segregated Surveys: Corner Code No. Z-15
Name: South 1/4 corner of Section 34 Corner No.: _____
DLC, HLS, Tract, Mining Claim, Indian Allotment, Federal Reserve, Townsite.

1. History of Corner Establishment and Subsequent Restoration:

This corner was originally established in 1900 by Lewis Shelton under GLO contract #552; at which time the corner was a Cedar post and 2 BT's were scribed. In 1921, Chester W. Pecore remonumented the corner with the iron pipe and brass cap shown in the diagram below, under GLO contract, group #19. Then on July 26, 1988, HAMPSTUR CORP. located the original corner and referenced it as shown in the diagram below, while working on a corner restoration project for PLUM CREEK TIMBER CO., under the direction of C. Hampton, LS. #18,087.

2. Description of Evidence Found:

1921 GLO MONUMENT: (1"x36" iron post with brass cap, 28" in the ground); fd. as described.
ORIGINAL 1900 GLO BT'S:

- (20" Fir, N37°45'E--27 lks.); fd. 24" Fir stump, 2 ft. high, with heal-over and 54-3 tag at record location.
- (12" Fir, S89°45'W--9 lks.); fd. 15" Fir stump, 4 ft. high, with heal-over and 54-3 tag at record location.

3. Describe Monument, Accessories and Corollary Data to Perpetuate this Corner Location. Diagram corner and indicate meridian and reference to map of record. Surveyor's Field Book No.

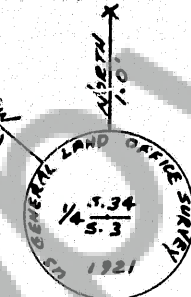
PS-056 Page No. 5 Date of work 7-26-1988

LOCATION:

- on a 20% NW. slope.
- in a stand of 8 yr. old reprod.
- approx. 200 ft. South of the 10 road, at a point which is approx. 625 ft. West of the jct. with the 13 rd.
- placed 4"x4"x8' treated post w/ location tag, (which reads "South-approx. 120 ft. to corner"), on South edge of 10 road.

NEW RP
3" HEMLOCK
W/ CHOPPED
"X" FACING MON.
P.C. LOC TAG

SET 6 FT. STEEL
FENCE POST WITH
PLUM CREEK LOC. TAG.



DECL=21°E

FD. GLO. 1"x36" IRON
PIPE W/ STAMPED
BRASS CAP. AS SET
IN 1921 GLO SURVEY.

NEW RP
7" FIR, SCRIBED
E 1/4 S 8 RP
P.E.R SPIKE IN CENTER
P.C. LOCATION TAG

Washington Plane Coordinates: _____ Zone, Y _____
Order Accuracy. Derived From: _____

Pin Pointed on Photo No. _____ Date _____ Located at _____

SURVEYOR'S CERTIFICATE

This corner record correctly represents work performed by me or under my direction in compliance with the provisions of Chapter 50, Laws of 1973. Date October 19, 1988

Signature Calvin S. Hampton LS. #18,087
Certificate No _____



AUDITOR'S CERTIFICATE

Filed for record this _____ day of _____ 19 _____ at _____ M. In _____
Book _____ of _____ at page _____ at the request of _____

County Auditor

Registered S
Inscribed, fir
Inscribed
Filed
Filed

Form prescribed by Bureau of Surveys and Maps pursuant to the provisions of Section 5 (2), Chapter 50, Laws of 1973.

FILED FOR RECORD
BY SKAMANIA CO. WASH
HAMPSTUR
CORP.
Nov 14 4 48 PM '88
GARY W. NELSON