

106180

BOOK 6/6 PAGE 39

HAMPSTUR CORPORATION
1030 Douglas A3
LONGVIEW, WASHINGTON 98632

LAND CORNER RECORD

SKAMANIA

County

T 6 N R 6 E W.M.

Corner Code No. J-9

Segregated Surveys:

Name: SE. Sec. cor. of Section 8

Corner No.:

DLC, HES, Tract, Mining Claim, Indian Allotment, Federal Reserve, Townsite.

1. History of Corner Establishment and Subsequent Restoration:

This corner was originally established in 1921 by Chester W. Perore under GLO contract, group 19; (the iron pipe and brass cap shown in the diagram below was set at that time). Then on July 16, 1981, the corner was found by Hobbs & Assoc., at which time the corner was maintained and one new reference added; (refer to LCR filed in BOOK 6/6 at PAGE 8). On July 26, 1988, HAMPSTUR CORP. found the above corner and maintained the remaining evidence as indicated in the diagram below, while working on a corner restoration project for PLUM CREEK TIMBER CO., under the direction of C. Hampton, LS. #18,087.

2. Description of Evidence Found:

ORIGINAL GLO MONUMENT: (2"x36" iron post with brass cap, 28" in ground); fd. as described.
ORIGINAL BT'S:

- **-(8" Hemlock, N54°E--5 lks.); fd. 21" live tree with overgrown face at N54°E--17.2 ft.
- **-(10" Fir, S55°E--28 lks.); fd. 26" live Fir with overgrown face at S55°E--3.0 ft.
- (26" Cedar, S54°W--14 lks.); fd. 28" live tree with overgrown face at record location.
- (10" Fir, N12½°W--45 lks.); fd. a burned, decayed stub at record location.

**Note: the NE and SE BT's have the distances reversed in GLO notes!!!

SUBSEQUENT RESTORATIONS: (Hobbs-1981)

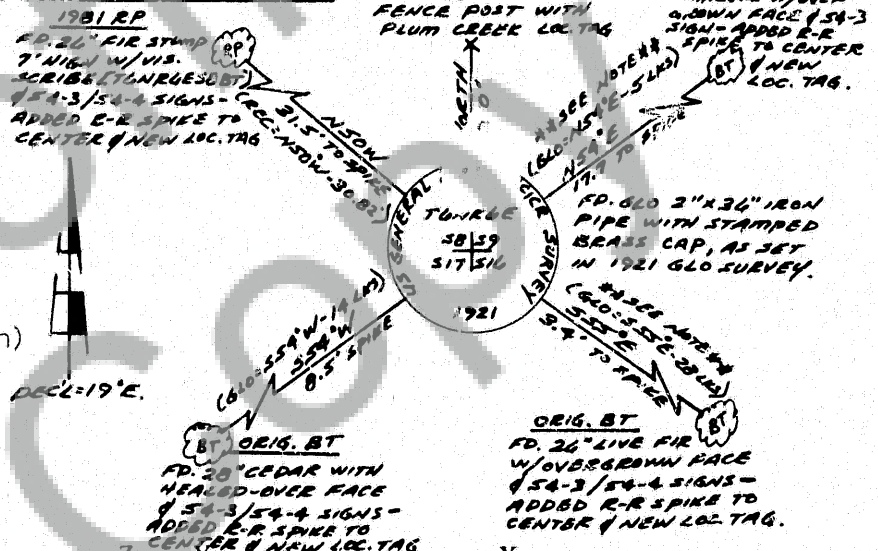
-(24" Fir, N50°W--30.82 ft.); fd. 26" Fir stump, 7 ft. high at N50°W--31.5 ft. (center)

3. Describe Monument, Accessories and Corollary Data to Perpetuate this Corner Location. Diagram corner and indicate meridian and reference to map of record. Surveyor's Field Book No.

PS-056 Page No. 15-16 Date of work 7-26-1988

LOCATION:

- 30 ft. South of a gentle draw which bears S70°W.
- S20°E--approx. 200 ft. from a point on the 1390B road which bears N30°W and S85°W, which is approx. 300 ft. East of a sharp North-South ridge.
- on an existing cutting line, which runs East-West, (timber to South and clearcut to North)
- a USFS posted line runs East and West.



Washington Plane Coordinates:

Zone, Y

X

Order Accuracy. Derived From:

Pin Pointed on Photo No. Date Located at

SURVEYOR'S CERTIFICATE

This corner record correctly represents work performed by me or under my direction in compliance with the provisions of Chapter 50, Laws of 1973. Date October 19, 1988

Signature

Calvin J. Hampton

LS #18,087

Certificate No



AUDITOR'S CERTIFICATE

Filed for record this day of 19 at M. In
Book of at page at the request of

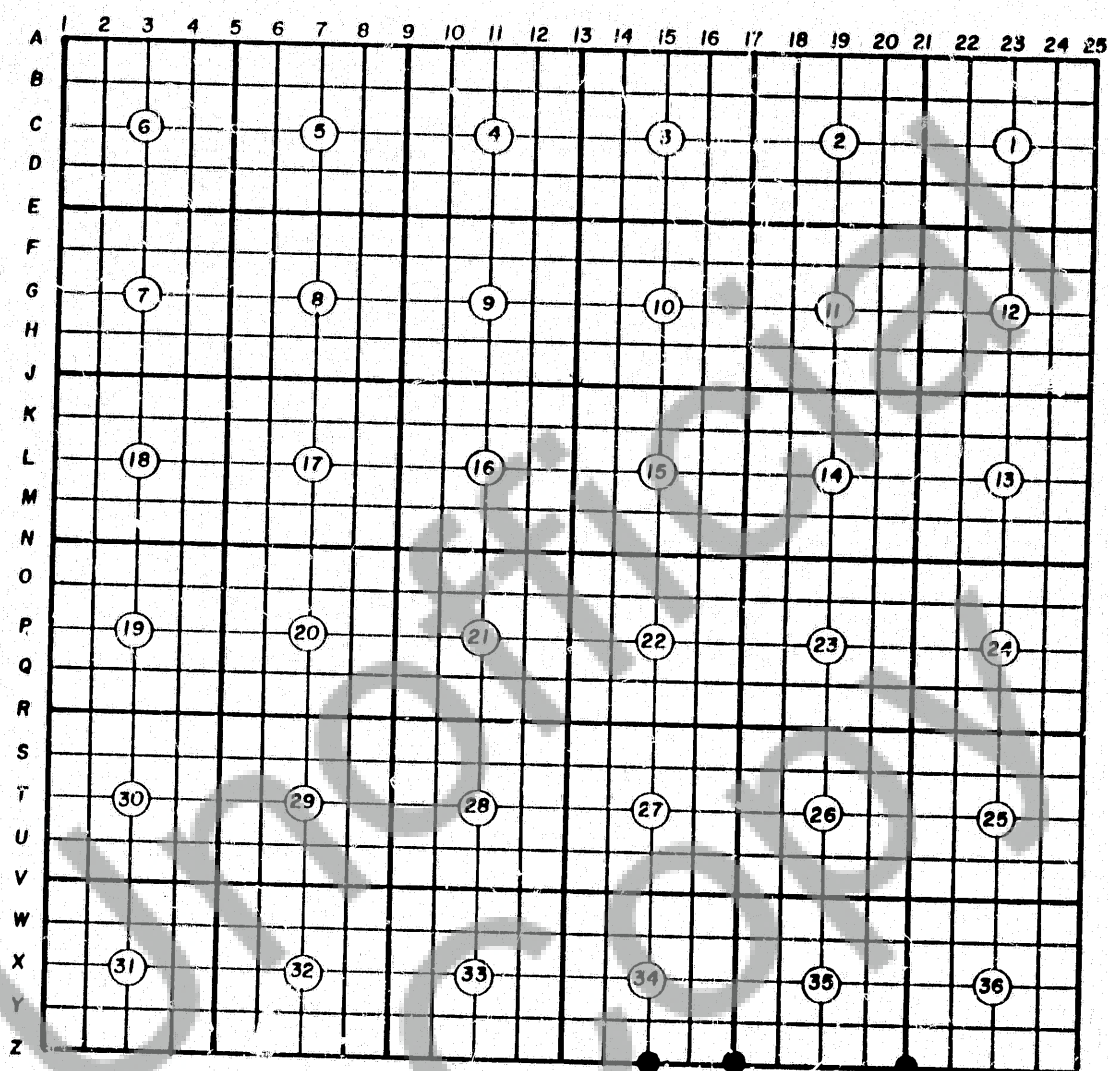
County Auditor

Registered S
Index L. h
Index S
Index S
Index S
Index S

Form prescribed by Bureau of Surveys and Maps pursuant to the provisions of Section 5 (2), Chapter 50, Laws of 1973.

106183

BOOK 7/6 PAGE 65

CORNER RECORD INDEX DIAGRAM--HAMPSTUR CORPORATION Job: 88-510 T. Z.N.R. & E. W.M.**CORNER LEGEND**

● NEW RECORDING DURING
THIS PROJECT.

NOTES--

FILED FOR RECORD
SKAMMIA CO. WASH
BY HAMPSTUR CORP.

Nov 14 4 03 PM '88

A. Nuts, Dep
HAMPSTUR
GARY M. OLSON

Registered S
Searched S
Indexed S
Filed S
Mailed S