

106176

BOOK 6/6 PAGE 35

HAMPSTUR CORPORATION  
1010 Douglas A3  
LONGVIEW, WASHINGTON 98632

## LAND CORNER RECORD

T 6 N, R 6 E. SKAMANIA County  
Segregated Surveys: \_\_\_\_\_ Corner Code No. F-6  
Name: NW. 1/16 corner of Section 8 Corner No.: \_\_\_\_\_  
DLC, HES, Tract, Mining Claim, Indian Allotment, Federal Reserve, Townsite.

## 1. History of Corner Establishment and Subsequent Restoration:

This corner was first set in 1977 by Hagedorn, Inc. as indicated on their survey map as recorded in BOOK 1, of SURVEYS, at PAGE 142, in Skamania County. Then in 1985, Hagedorn remonumented the corner with the USFS aluminum monument shown in the diagram below and as more particularly described on his survey map recorded in BOOK 2 at PAGE 236 in Skamania County. Then on July 27, 1988, HAMPSTUR CORP. located and maintained the corner as shown below, as part of a corner restoration project for PLUM CREEK TIMBER CO., under the direction of C. Hampton, LS. #18,087.

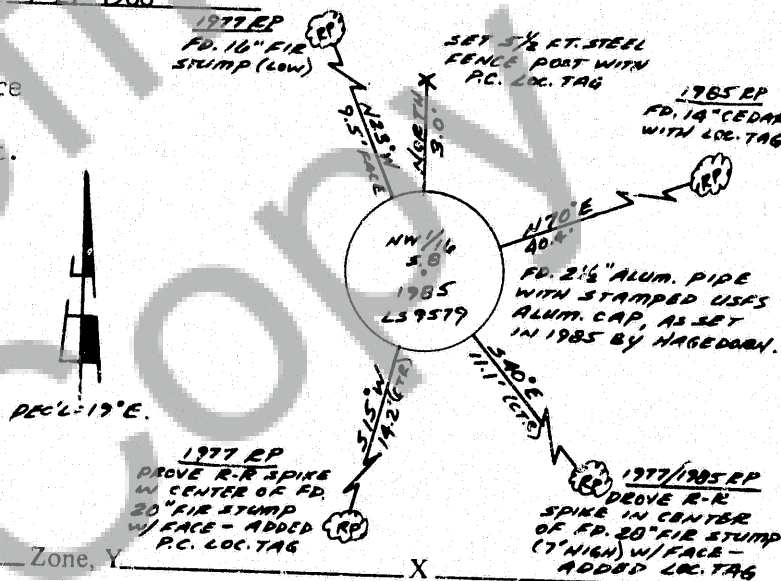
## 2. Description of Evidence Found:

- The 2 1/2" aluminum monument set in a mound of stone in 1985, by Hagedorn, Inc., as mentioned above and shown below.
- fd. 4 references established by Hagedorn, between the 1977 and 1985 surveys. (see the diagram below).

3. Describe Monument, Accessories and Corollary Data to Perpetuate this Corner Location. Diagram corner and indicate meridian and reference to map of record. Surveyor's Field Book No. PS-056 Page No. 6 Date of work 7-27-1988

## LOCATION:

- at the existing SW corner of a mature stand of conifers.
- on a Southeast slope, approx. 300 ft. West of a creek which bears North.
- approx. 125 ft. East of a main haul road, which bears S18°W and N62°W
- approx. 125 ft. NW of a flat basin, which is approx. one acre in size.
- fd. a USFS posted line running to the North and to the East.



Washington Plane Coordinates. \_\_\_\_\_ Zone, Y \_\_\_\_\_ X  
Order Accuracy. Derived From: \_\_\_\_\_

Pin Pointed on Photo No. \_\_\_\_\_ Date \_\_\_\_\_ Located at \_\_\_\_\_

## SURVEYOR'S CERTIFICATE

This corner record correctly represents work performed by me or under my direction in compliance with the provisions of Chapter 50, Laws of 1973. Date October 17, 1988

Signature Calvin J. Hampton

LS. #18,087  
Certificate No



## AUDITOR'S CERTIFICATE

Filed for record this \_\_\_\_\_ day of \_\_\_\_\_ 19\_\_\_\_ at \_\_\_\_\_ M. In \_\_\_\_\_ of \_\_\_\_\_ at page \_\_\_\_\_ at the request of \_\_\_\_\_

County Auditor

Registered \_\_\_\_\_

Index \_\_\_\_\_

Index \_\_\_\_\_

Index \_\_\_\_\_

Index \_\_\_\_\_

Index \_\_\_\_\_

FILED FOR RECORD  
SKAMANIA COUNTY  
HAMPSTUR CORP.  
Aug 4 3 29 PM '88  
d. J. P. O. P. O.  
AUDITOR  
M. OLSON

Form prescribed by Bureau of Surveys and Maps pursuant to the provisions of Section 5 (2), Chapter 50, Laws of 1973.