

106174

BOOK 4/6 PAGE 33

## LAND CORNER RECORD

HAMPSTUR CORPORATION  
1010 Douglas A3  
LONGVIEW, WASHINGTON 98632

SKAMANIA County  
T 6 N, R 6 E, W.M.  
Segregated Surveys:  
Name: E. 1/16 corner between S.5 S.8 Corner No.:  
DLC, HES, Tract, Mining Claim, Indian Allotment, Federal Reserve, Townsite

## 1. History of Corner Establishment and Subsequent Restoration:

This corner was first set in 1977 by Hagedorn, Inc. as indicated on the record of survey in BOOK 1 of SURVEYS at PAGE 142, in the records of Skamania County; (a 5/8" rebar and 3 references were made at that time). Then in 1985, Hagedorn, Inc. remonumented the corner with a USFS aluminum monument and scribed 2 new references, as indicated on the record of survey in BOOK 2 of SURVEYS at PAGE 236, in the records of Skamania County. On July 18, 1988, the corner was found and maintained, as indicated below, by HAMPSTUR CORP. under the direction of C. Hampton, LS #18,087, during a corner restoration project for PLUM CREEK TIMBER CO.

## 2. Description of Evidence Found:

Found the USFS aluminum monument as mentioned above and shown below, along with the 5/8" rebar also mentioned above and described below.

Found all 5 references, as mentioned above and which are shown in the diagram below; (most of the references have been burnt and are dead).

## 3. Describe Monument, Accessories and Corollary Data to Perpetuate this Corner Location. Diagram corner and indicate meridian and reference to map of record. Surveyor's Field Book No. PS-056 Page No. 2 Date of work 7-18-1988

## LOCATION:

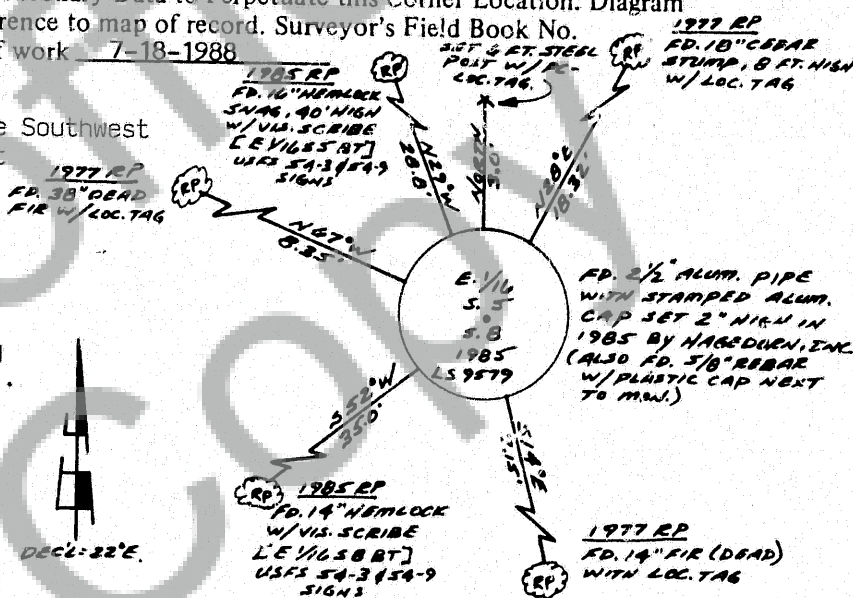
-S40°W--approx. 100 ft. from the Southwest corner of a fence around a test plot.

-approx. 200 ft. North of the bottom of a draw, which bears to the Southwest.

-on a 20% South slope.

-on a North-South timber cutting line; (timber West-reprod East).

Note: Blue bands were painted around the 1977 RP's. (the 1985 RP's had red bands painted in 1985).



Washington Plane Coordinates: Zone, Y X  
Order Accuracy. Derived From:

Pin Pointed on Photo No. Date Located at

## SURVEYOR'S CERTIFICATE

This corner record correctly represents work performed by me or under my direction in compliance with the provisions of Chapter 50, Laws of 1973. Date October 17, 1988

Signature Calvin J. Hampton

LS. #18,087

Certificate No



## AUDITOR'S CERTIFICATE

Filed for record this day of 19 at M. In  
Book of at page at the request of

FILED FOR RECORD  
SKAMANIA CO. WASH  
BY  
Nov 14 3 22 PM '88  
GARY HANCOCK

County Auditor

Form prescribed by Bureau of Surveys and Maps pursuant to the provisions of Section 5 (2), Chapter 50, Laws of 1973.

Registered S  
In  
Filed