

106168

BOOK 6/6 PAGE 27

HAMPSTUR CORPORATION  
1010 Douglas A3  
LONGVIEW, WASHINGTON 98632

# LAND CORNER RECORD

T. 6 N. R. 6 E., W.M. SKAMANIA County  
Segregated Surveys: NW. corner of Section 1 Corner Code No. A-21  
Name: \_\_\_\_\_ Corner No.: \_\_\_\_\_  
DLC, HES, Tract, Mining Claim, Indian Allotment, Federal Reserve, Townsite.

## 1. History of Corner Establishment and Subsequent Restoration:

This corner was originally established in 1900, by Lewis Shelton under GLO contract #552, at which time he set a post for the corner and scribed 4 BT's. Then in 1921, Chester Pecore remonumented the corner with an iron pipe and brass cap under his GLO contract under group 19. Then on August 30, 1988, HAMPSTUR CORP. found the above corner had been destroyed by a "cat road" and remonumented the corner, as shown in the diagram below, from the original BT's found; while working on a corner restoration project for PLUM CREEK TIMBER CO. under the direction of C. Hampton, LS #18,087.

## 2. Description of Evidence Found:

ORIGINAL GLO CORNER: (2"x36" iron pipe with brass cap); destroyed by "cat roads".

### ORIGINAL BT'S:

- (12" Fir, N42°E--38 lks.); fd. a 16" "low-cut" stump at record location.
- (10" Fir, S62°45'E--22 lks.); fd. 14" "low-cut" stump with visible scribe [BT], at S62°E--25.2 ft. (possible error in GLO notes).
- (10" Fir, S61½°W--15 lks.); fd. 18" stump with heal-over face at record location.
- (14" Fir, N56°W--37 lks.); fd. 24" stump with heal-over face, 8 ft. high, at record location

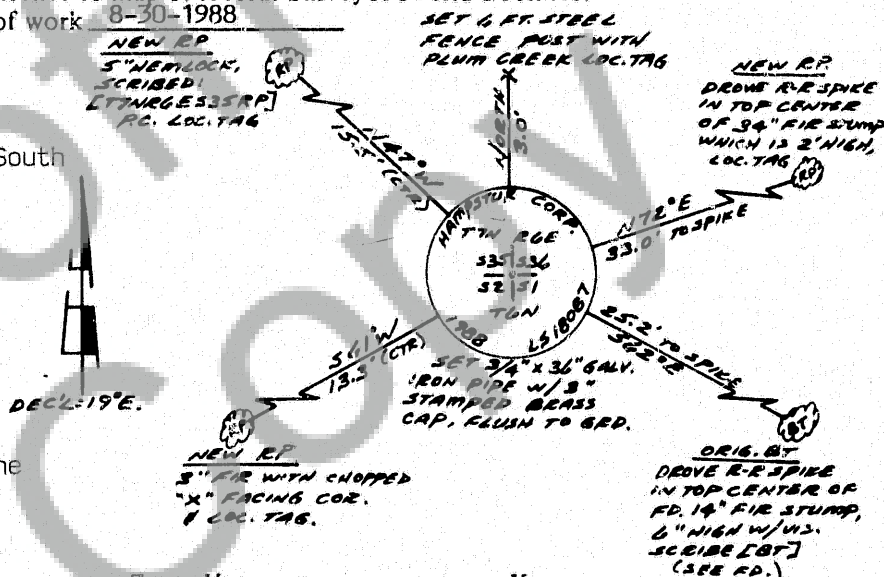
Note: added BT tags and blue paint to all BT's.

## 3. Describe Monument, Accessories and Corollary Data to Perpetuate this Corner Location. Diagram corner and indicate meridian and reference to map of record. Surveyor's Field Book No.

PS-056 Page No. 7-8 Date of work 8-30-1988

### LOCATION:

- on a gentle North slope.
- near the intersection of fire trails leading to the North, South and East.
- on the East edge of approx. 12 yr. old reprod. (recently planted Fir to the Northeast and 3 yr. old reprod. to the Southeast.
- approx. 200 ft. South of an abrupt descent towards the North.
- S55°W--approx. 250 ft. from the end of a rutted spur road.



Washington Plane Coordinates: \_\_\_\_\_ Zone, Y \_\_\_\_\_ X \_\_\_\_\_  
Order Accuracy. Derived From: \_\_\_\_\_

Pin Pointed on Photo No. \_\_\_\_\_ Date \_\_\_\_\_ Located at \_\_\_\_\_

## SURVEYOR'S CERTIFICATE

This corner record correctly represents work performed by me or under my direction in compliance with the provisions of Chapter 50, Laws of 1973. Date October 17, 1988

Signature Calvin J. Hampton LS. #18,087  
Certificate No. \_\_\_\_\_



## AUDITOR'S CERTIFICATE

This corner record was filed for record this \_\_\_\_\_ day of \_\_\_\_\_ 19\_\_\_\_ at \_\_\_\_\_ M. In \_\_\_\_\_ of \_\_\_\_\_ at page \_\_\_\_\_ at the request of \_\_\_\_\_

County Auditor

FILED FOR RECORD  
SKAMANIA CO. WASH.  
BY HAMPSTUR CORP.  
Noted 2:54 PM '88  
d. J. [Signature]  
GARY H. OLSON  
Auditor  
Prescribed by Bureau of Surveys and Maps pursuant to the provisions of Section 5 (2), Chapter 50, Laws of 1973.