



106167

BOOK 6/6 PAGE 26

LAND CORNER RECORD

HAMPSTUR CORPORATION
1010 Douglas A3
LONGVIEW, WASHINGTON 98632

T. 6 N. R. 6 E. SKAMANIA County
Segregated Surveys: Corner Code No. A-17
Name: NW corner of Section 2 Corner No.:
DLC, HES, Tract, Mining Claim, Indian Allotment, Federal Reserve, Town etc.

1. History of Corner Establishment and Subsequent Restoration:
In 1900, Lewis Shelton originally established the corner with a post and scribed 4 BT's under GLO contract #552; then in 1921, Chester Pecore remonumented the corner with the iron pipe and brass cap shown below and added 2 additional BT's to the South as he reported the ones scribed in 1900 were down. Pecore's survey was under GLO contract, group #19. Then on July 19, 1988, HAMPSTUR CORP. found the above mentioned brass cap monument along with 3 original BT's while performing a corner restoration project in the area for PLUM CREEK TIMBER CO. The corner was maintained and references added as shown below, under the direction of C. Hampton, LS. #18,087.

2. Description of Evidence Found:

ORIGINAL GLO CORNER: (2"x36" iron pipe, 28" deep with brass cap); found as described.

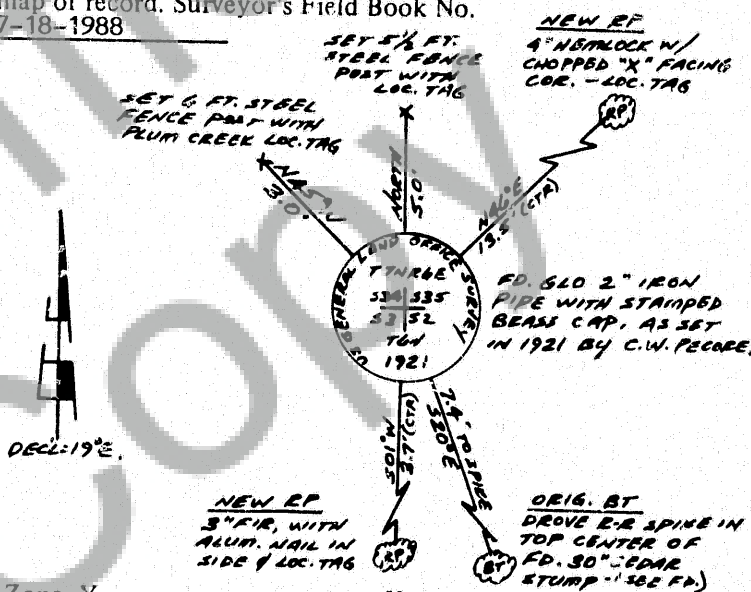
ORIGINAL BT'S:

- [1900 BT] (6" Hemlock, N45°E--17 lks.); fd. 10" stump, 3 ft. high, with vis. axe work and face at record location.
- [1900 BT] (18" Fir, N59½°W--17 lks.); fd. decayed remains of uprooted stump.
- [1921 BT] (5" Cedar, S22°E--12 lks.); fd. 30" stump with visible face at S20°E--7 ft.
- [1921 BT] (18" Maple, S32°45'W--68 lks.); fd. 36" stump with visible axe work at record location.

3. Describe Monument, Accessories and Corollary Data to Perpetuate this Corner Location. Diagram corner and indicate meridian and reference to map of record. Surveyor's Field Book No. PS-056 Page No. 3-4 Date of work 7-18-1988

LOCATION;

- on a 50% Northeast slope.
- approx. 75 ft. West of a dry creek bed, which bears Northeast and 30 ft. East of a spring.
- approx. 140 ft. South of "10 road" at a point which is 150 ft. Westerly of the center of a concrete bridge.



Washington Plane Coordinates: Zone, Y X
Order Accuracy. Derived From:

Pin Pointed on Photo No. Date Located at

SURVEYOR'S CERTIFICATE

This corner record correctly represents work performed by me or under my direction in compliance with the provisions of Chapter 50, Laws of 1973. Date October 17, 1988

Signature Calvin J. Hampton LS. #18,087
Certificate No



AUDITOR'S CERTIFICATE

I have examined this day of 19 at M. In
of at page at the request of

County Auditor

Registered S
Indexed, Sir S
Indirect S
Filed
Mailed

Form prescribed by Bureau of Surveys and Maps pursuant to the provisions of Section 5 (2), Chapter 50, Laws of 1973.

FILED FOR RECORD
SKAMANIA CO. WASH.
BY
NOV 14 1988
A. J. OLSON