



100166

BOOK 6/6 PAGE 25

HAMPSTUR CORPORATION  
1010 Douglas A3  
LONGVIEW, WASHINGTON 98632

# LAND CORNER RECORD

T 6 N.R. 6 E., W.M. SKAMANTIA County  
Segregated Surveys: Corner Code No. A-15  
Name: North 1/4 corner of Section 3 Corner No.: \_\_\_\_\_  
DLC, HES, Tract, Mining Claim, Indian Allotment, Federal Reserve, Townsite.

## 1. History of Corner Establishment and Subsequent Restoration:

This corner was originally established in 1900 by Lewis Shelton under GLO contract #552; at which time the corner was a Cedar post and 2 BT's were scribed. In 1921, Chester W. Pecore remonumented the corner with the iron pipe and brass cap shown in the diagram below, under GLO contract, group #19. Then on July 26, 1988, HAMPSTUR CORP. located the original corner and referenced it as shown in the diagram below, while working on a corner restoration project for PLUM CREEK TIMBER CO., under the direction of C. Hampton, LS. #18,087.

## 2. Description of Evidence Found:

1921 GLO MONUMENT: (1"x36" iron post with brass cap, 28" in the ground); fd. as described.  
ORIGINAL 1900 GLO BT'S:

- (20" Fir, N37°45'E--27 lks.); fd. 24" Fir stump, 2 ft. high, with heal-over and 54-3 tag at record location.
- (12" Fir, S89°45'W--9 lks.); fd. 15" Fir stump, 4 ft. high, with heal-over and 54-3 tag at record location.

## 3. Describe Monument, Accessories and Corollary Data to Perpetuate this Corner Location. Diagram corner and indicate meridian and reference to map of record. Surveyor's Field Book No.

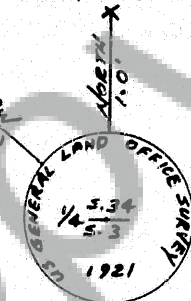
PS-056 Page No. 5 Date of work 7-26-1988

### LOCATION:

- on a 20% NW. slope.
- in a stand of 8 yr. old reprod.
- apprx. 200 ft. South of the 10 road, at a point which is approx. 625 ft. West of the jct. with the 13 rd.
- placed 4"x4"x8" treated post w/ location tag (which reads "South-approx. 190 ft. to corner"), on South edge of 10 road.

NEW RP  
3" HEMLOCK  
W/ CHOPPED  
"X" FACING MON.  
P.C. LOC. TAG

5/16" 6 FT. STEEL  
FENCE POST WITH  
PLUM CREEK LOC. TAG.



DECL: 21°E

FD. GLO. 1" x 36" IRON  
PIPE W/ STAMPED  
BRASS CAP. AS SET  
IN 1921 GLO SURVEY.

Nov 14 2 46 PM '88  
GARY M. OLSON  
JUNIOR

NEW RP  
7" FIR, SCRIBED  
E 1/4 33 RP  
P.C. SPIKE IN CENTER  
P.C. LOCATION TAG

Washington Plane Coordinates: \_\_\_\_\_ Zone, Y \_\_\_\_\_  
Order Accuracy. Derived From: \_\_\_\_\_

Pin Pointed on Photo No. \_\_\_\_\_ Date \_\_\_\_\_ Located at \_\_\_\_\_

## SURVEYOR'S CERTIFICATE

This corner record correctly represents work performed by me or under my direction in compliance with the provisions of Chapter 50, Laws of 1973 Date October 19, 1988

Signature Calvin J. Hampton LS. #18,087  
Certificate No



## AUDITOR'S CERTIFICATE

Filed for record this \_\_\_\_\_ day of \_\_\_\_\_ 19 \_\_\_\_\_ at \_\_\_\_\_ M. In  
Book \_\_\_\_\_ of \_\_\_\_\_ at page \_\_\_\_\_ at the request of \_\_\_\_\_

County Auditor

Registered S  
Indexed, or S  
Indirect S  
Filed  
Mailed