

104732

State of Washington  
DEPARTMENT OF NATURAL RESOURCES  
BUREAU OF SURVEYS AND MAPS  
LAND CORNER RECORD

SE 1/16  
Section 18

Skamania County

Corner Code No. M-4

T 2 N, R 5 E, W.M.  
Segregated Surveys:  
Name: n/a

Corner Number: n/a

## 1. History of Corner Establishment and Subsequent Restoration:

Set by Dorrell Germunson in his subdivision of Section 18 in 1983, recorded in Book 2, Page 114 in the Skamania County Auditor's office.

## 2. Description of Evidence Found:

5/8" rebar with plastic cap marked LS 10997.

FILED FOR RECORD  
SKAMANIA CO. WASH  
BY *[Signature]*

FEB 22 2 33 PM '88

AUDITOR  
GARY M. OLSON

3. Describe Monument, Accessories and Corollary Data to Perpetuate this Corner Location. Diagram corner and indicate meridian and reference to map of record. Surveyor's Field Book No. 600.29, Page No. 14. Date of work February 4, 1988.

See reverse side for corner diagram.

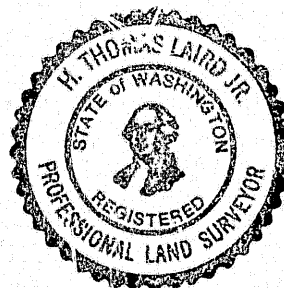
Pin Pointed on Photo No. \_\_\_\_\_, Date \_\_\_\_\_, Located at \_\_\_\_\_.

## SURVEYOR'S CERTIFICATE

[Seal]

This corner record correctly represents work performed by me or under my direction in compliance with the provisions of Chapter 50, Laws of 1973. Date: February 17, 1988.

*H. Thomas Laird Jr.* 21490  
Signature Certificate No.



## AUDITOR'S CERTIFICATE

Filed for record this \_\_\_\_\_ day of \_\_\_\_\_ 19 \_\_\_\_\_ at \_\_\_\_\_ M.  
In Book \_\_\_\_\_ of \_\_\_\_\_ at page \_\_\_\_\_ at the request  
of Washington State Department of Natural Resources.

County Auditor

Indexed *S*  
Indirect *S*  
Filed *S*  
Mailed

7-11-88

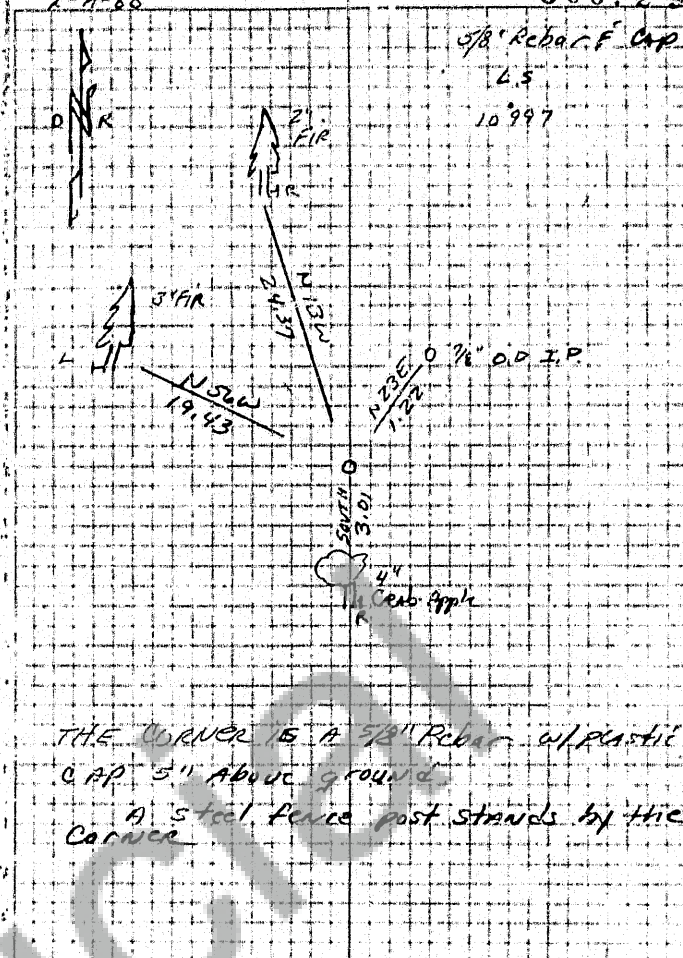
600.20

5/8" Rebar F Cap

L.S.

10.997

S. E. 1/16 CORNER S. 18, T. 2 N, R. 5 E.

THE CORNER IS A 5/8" REBAR W/ PLASTIC  
CAP 5" ABOVE GROUND.A STEEL FENCE POST STANDS BY THE  
CORNER.

BOOK 2/5

PAGE 47