

103620

BOOK 6/5 PAGE 33

State of Washington  
DEPARTMENT OF NATURAL RESOURCES  
BUREAU OF SURVEYS AND MAPS  
LAND CORNER RECORD

1/4  
22 | 23

Skamania County

T 6 N, R 5 E, W.M.

Corner Code No. P-17

Segregated Surveys:

Name: n/a

Corner Number: n/a

## 1. History of Corner Establishment and Subsequent Restoration:

Originally establish in 1909 by GLO Surveyor C. Frank Rhodes with a marked stone and 2 BTs.

## 2. Description of Evidence Found:

Stone with "1/4" marked on west face.  
35" dead fir BT at S32E 110 feet, healed over face.  
36" live fir BT at S15W 92.4 feet with visible scribing.

3. Describe Monument, Accessories and Corollary Data to Perpetuate this Corner Location.  
Diagram corner and indicate meridian and reference to map of record. Surveyor's Field Book No. 601.07A, Page No. 30. Date of work July 27, 1987.

Corner is the original GLO stone.

See reverse side for sketch.

## SURVEYOR'S CERTIFICATE

This corner record correctly represents work performed by me or under my direction in compliance with the provisions of Chapter 50, Laws of 1973.  
Date: August 3, 1987.

H. Thomas Laird Jr. 21490  
Signature Certificate No.

## AUDITOR'S CERTIFICATE

Filed for record this \_\_\_\_\_ day of \_\_\_\_\_ 19 \_\_\_\_\_ at \_\_\_\_\_ M.  
In Book \_\_\_\_\_ of \_\_\_\_\_ at page \_\_\_\_\_ at the request  
of Washington State Department of Natural Resources.

Registered S  
Indexed S  
Indirect S  
Filmed  
Mailed

County Auditor



Aug 3 2 35 PM '87  
BY P.S.H.S.  
[Seal]

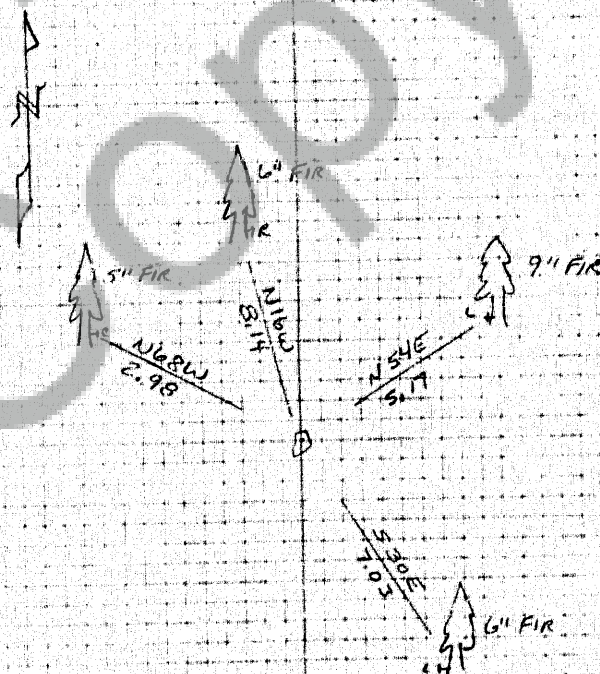
G.L.O. of 1909, C. Frank Rhodes  
 TH 34.50 Creek BL N 40 W  
 40.00 18x10x7 stone with  $\frac{1}{4}$   
 ON WEST FACE  
 28" fir S31°45'E 166.2 (109.4)  
 28" fir S15°30'W 110.1 (92.4)  
 40.50 leave Green River enter burn

SECTION CORNER 22 & 23, T6N, R5E.

Evidence Found:

stone, firmly set, 4" exposed  
 WITH  $\frac{1}{4}$  ON WEST FACE  
 B.T. 35' Dead fir S32E 110'  
 AXE MARKS ON BARK & OUPRGROWN  
 face (closed)  
 B.T. 36" Live fir S15W 92.4,  
 scribe visible (23)

7.27.87 GORDON BRASSLER 30 801.2A



CORNER is the original stone set by  
 G.L.O. survey with  $\frac{1}{4}$  MARKED ON WEST  
 FACE