

102280

BOOK 6/5 PAGE 23

State of Washington
DEPARTMENT OF NATURAL RESOURCES
BUREAU OF SURVEYS AND MAPS
LAND CORNER RECORD

1/4
32
5

Skamania County

Corner Code No. Z-7

T 6 N, R 5 E, W.M.
Segregated Surveys:
Name: n/a

Corner Number: n/a

1. History of Corner Establishment and Subsequent Restoration:

Originally established in 1909 by GLO Surveyor C. Frank Rhodes with a marked stone and 2 dead BTs.

Recovered in 1966 by James E. Jelley, BLM. He set a pipe with BLM cap and scribed 2 new BTs.

FILED FOR RECORD
SKAMANIA CO. WASH
BY TOM LUTHE

2. Description of Evidence Found:

Original stone marked 1/4 (closed four).
BLM pipe with stamped brass cap.

40" cedar windfall BT at S28W 43 feet.

27" fir at N27W 18.91 feet (1966 BT).

20" fir at S37E 15.09 feet (1966 BT).

The last two BT's were felled to allow for a photo target. They are now stumps.

Dec 1 1 26 PM '86

AUDITOR
GARY M. OLSON

3. Describe Monument, Accessories and Corollary Data to Perpetuate this Corner Location. Diagram corner and indicate meridian and reference to map of record. Surveyor's Field Book No. 601.07, Page No. 45. Date of work June 17, 1986.

Corner is BLM pipe and cap.

See reverse side for corner diagram.

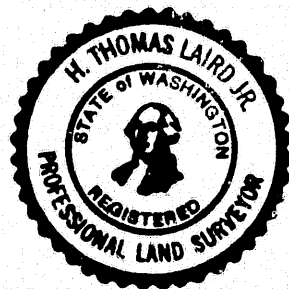
SURVEYOR'S CERTIFICATE

[Seal]

This corner record correctly represents work performed by me or under my direction in compliance with the provisions of Chapter 50, Laws of 1973.
Date: November 18, 1986.

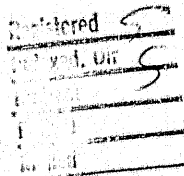
H. Thomas Laird Jr.
Signature

21490
Certificate No.



AUDITOR'S CERTIFICATE

Filed for record this _____ day of _____ 19____ at _____ M.
In Book _____ of _____ at page _____ at the request
of Washington State Department of Natural Resources.



County Auditor

6-17-86
GLO Survey of 1909

40.00 Set sandstone 20x14x10 marked

1/4 on north face

25" dead hemlock N20E 36L 23.8

40" dead cedar S56W 65L 42.3

Corner recovered by Vanne Kelley, BLM,
in 1966. He noted the bearings to the
cedar was 30° off. He scribed 2

new BTS:

22" fir N26W 29L 19.1'

12" fir S37E 23.5L 15.5'

1/4 corner $\frac{32}{S}$ T S E L N R S E

Found original stone 20x14x10 marked

1/4. BLM monument with stamped
brass cap.

Found:

40" cedar windfall @ S28W, 43'

27" fir stump (cut) @ N27W 18.91'

20" fir stump (cut) @ S37E 15.09'

original stone is set on the north
side of the BLM pipe/cap

Hanlin
Bressler 45
601.07

T6N
S 32
S E
TSN RSE
1966

