

102276

State of Washington
DEPARTMENT OF NATURAL RESOURCES
BUREAU OF SURVEYS AND MAPS
LAND CORNER RECORD

1/4
27 | 26

Skamania County

T 6 N, R 5 E, W.M.

Corner Code No. T-17

Segregated Surveys:

Name: n/a

Corner Number: n/a

1. History of Corner Establishment and Subsequent Restoration:

Originally established in 1909 by GLO surveyor C. Frank Rhodes with a marked stone and 2 dead bearing trees.

No subsequent restoration found.

FILED FOR RECORD
SKAMANIA CO. WASH
BY TOM LAIRD

Dec 1 1 21 PM '86

AUDITOR

GARY M. OLSON

2. Description of Evidence Found:

GLO stone with a closed four marked on west face.
Rotted remains of 18" fir at S81E 10 feet.
Rotted 24" fir stub at S76W 30 feet.

3. Describe Monument, Accessories and Corollary Data to Perpetuate this Corner Location. Diagram corner and indicate meridian and reference to map of record. Surveyor's Field Book No. 601.07, Page No. 53. Date of work June 25, 1986.

Replaced original stone with DNR aluminum monument with stamped cap.
See reverse side for corner diagram.

SURVEYOR'S CERTIFICATE

[Seal]

This corner record correctly represents work performed by me or under my direction in compliance with the provisions of Chapter 50, Laws of 1973.
Date: November 19, 1986.

Signature

H. Thomas Laird Jr.

21490

Certificate No.



AUDITOR'S CERTIFICATE

Filed for record this _____ day of _____ 19____ at _____ M.
In Book _____ of _____ at page _____ at the request
of Washington State Department of Natural Resources.

County Auditor

Registered
Index
Filed
1986

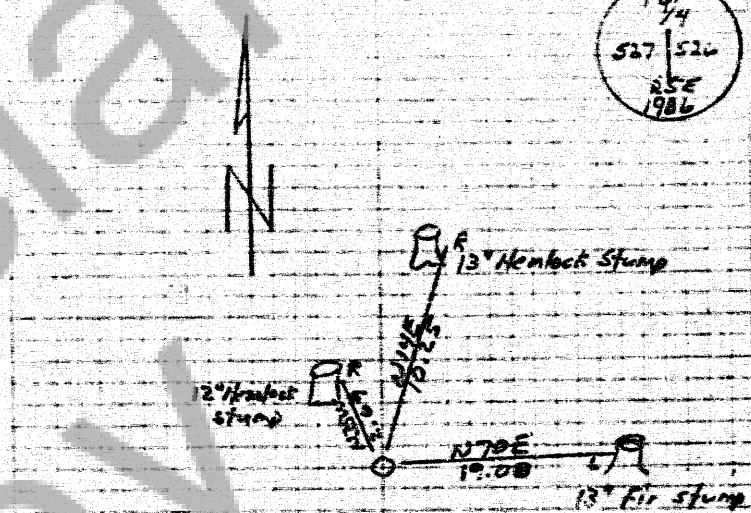
GLO Survey of 1909 (Rhodes)
 40.00 Set andesite stone 16x10x8 with
 1/4 marked on west face.
 12" dead fir S82E 15L 99'
 24" dead fir S76W 45L 29.7

1/4 corner 27 1/2 26 T6N R5E

Found stone with a 4 scribed on it.

Rotted remains of 12" fir @ S82E, 10'.
 Rotted 24" fir stub @ S76W, 30'

Laird 53
 Bressler 601.07
 6-25-86



Set standard BNR Aluminum monument with
 top exposed 6". Moved original stone on
 south side of monument.