

102269

BOOK 6/5 PAGE 1

State of Washington
DEPARTMENT OF NATURAL RESOURCES
BUREAU OF SURVEYS AND MAPS
LAND CORNER RECORD

1/4
14 | 13

Skamania County

T 6 N, R 5 E, W.M.

Corner Code No. L-21

Segregated Surveys:

Name: n/a

Corner Number: n/a

1. History of Corner Establishment and Subsequent Restoration:

Originally established in 1909 by GLO Surveyor C. Frank Rhodes with a marked stone and 2 BTs.

No subsequent restoration found.

FILED FOR RECORD
SKAMANIA CO. WASH
BY THOMAS LAIRD JR.

Dec 1 1 14 PM '86

AUDITOR
GARY M. CLSON

2. Description of Evidence Found:

Original stone marked 1/4.

26" hemlock stub at N81E 11.6 feet to face.

17" hemlock at N87W 10.9 feet to scribed face.

3. Describe Monument, Accessories and Corollary Data to Perpetuate this Corner Location.
Diagram corner and indicate meridian and reference to map of record. Surveyor's Field Book No. 601.07, Page No. 58. Date of work September 10, 1985.

Replaced original stone with DNR aluminum monument with stamped cap.

See reverse side for corner diagram.

SURVEYOR'S CERTIFICATE

[Seal]

This corner record correctly represents work performed by me or under my direction in compliance with the provisions of Chapter 50, Laws of 1973.
Date: November 18, 1986.

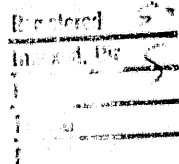
Signature

H. Thomas Laird Jr.

21490
Certificate No.

**AUDITOR'S CERTIFICATE**

Filed for record this _____ day of _____ 19____ at _____ M.
In Book _____ of _____ at page _____ at the request
of Washington State Department of Natural Resources.



County Auditor

G.L.O. of 1909.
 4000 CH. 500 STONE 15X14X10 WITH 1/4
 ON WEST FACE FROM WHICH
 26" HEM N 78 E 19.4 12.54
 15" HEM N 89 W 18.2 11.02

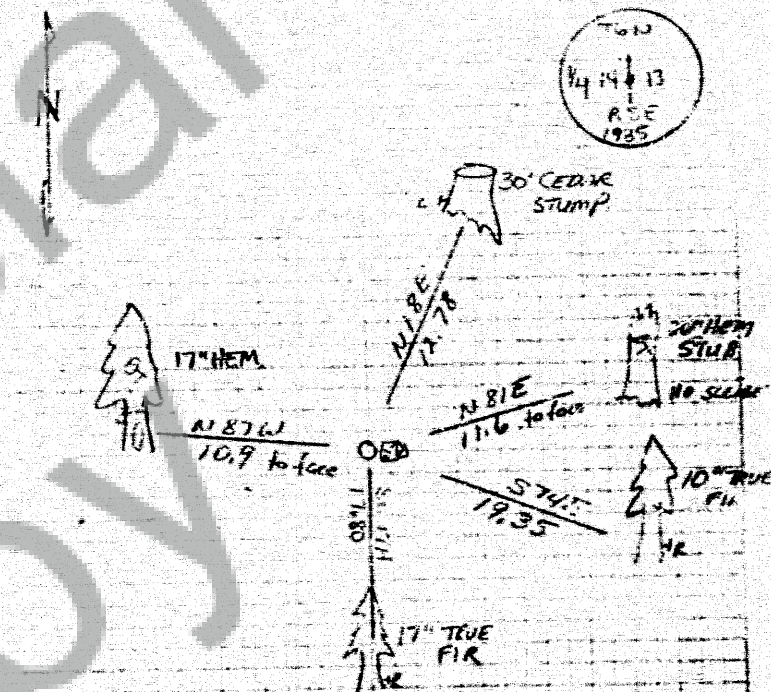
1/4 SECTION CORNER 14+13 TUN RSE

FOUND 15X10" STONE WITH
 1/4 MARKED ON WEST FACE
 26" HEM STUB NO SCR RE
 17" HEM, VIS. SCR RE, 1/4 S W BT.

9-10-75

GORDON
 CRESSLER
 HALLING

58



REPLACED 15X10" STONE WITH 1/4 ON WEST FACE
 WITH 3/4" ALUM. PIPE WITH ALUM. CAP
 6" ABOVE GROUND. PLACED STONE AT EAST
 SIDE OF PIPE.