

102266

BOOK 5/5 PAGE 11

State of Washington
DEPARTMENT OF NATURAL RESOURCES
BUREAU OF SURVEYS AND MAPS
LAND CORNER RECORD

32	33
5	4

Skamania County

T 5 N, R 5 E, W.M.

Segregated Surveys:

Name: n/a

Corner Code No. A-2

Corner Number: n/a

1. History of Corner Establishment and Subsequent Restoration:

Originally established in 1909 by GLO surveyor C. Frank Rhodes with a notched stone and 4 dead BTs.

No subsequent restoration found.

2. Description of Evidence Found:

Original stone with proper notches.

50" fir stub BT, 12 feet high, at S14E 51 feet.

40" fir stump BT, crushed by 2 windfalls, at S37W 7 feet.

40" fir stump BT at S4W 20 feet.

Rotted remains of 24" fir at N79E 25 feet.

FILED FOR RECORD
SKAMANIA CO. WASH
BY JCM 1/10/86

DEC 11 11 PM '85
J. J. [unclear]
AUDITOR
GARY M. OLSON

3. Describe Monument, Accessories and Corollary Data to Perpetuate this Corner Location.
Diagram corner and indicate meridian and reference to map of record. Surveyor's Field Book No. 601.07, Page No. 54. Date of work June 12, 1986.

Replaced original stone with DNR aluminum monument with stamped cap.

See reverse side for corner diagram.

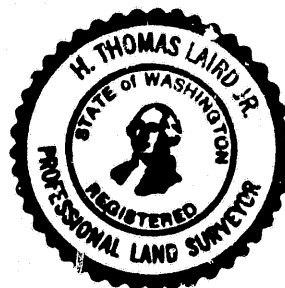
SURVEYOR'S CERTIFICATE

[Seal]

This corner record correctly represents work performed by me or under my direction in compliance with the provisions of Chapter 50, Laws of 1973.
Date: November 18, 1986.

H. Thomas Laird Jr.
Signature

21490
Certificate No.



AUDITOR'S CERTIFICATE

Filed for record this _____ day of _____ 19____ at _____ N.
In Book _____ of _____ at page _____ at the request
of Washington State Department of Natural Resources.

County Auditor

Cont.
Bryson
Hart

6-12-56

54
51.53
55.54
TSA
1946

Section Corner
S 1/4 T 56 N R 5 E

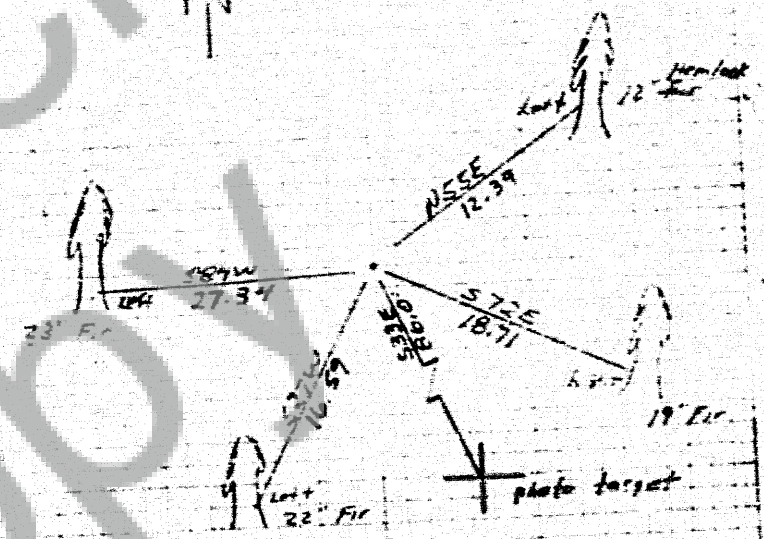
40 dead fir	N79E	38L	25.1
50 dead fir	S14E	77L	52.8
40 dead fir	S37W	10L	6.6
40 dead fir	N4W	31L	20.5

Section Corner $\frac{22}{51.4}$ T 56 N R 5 E

Found 13x10x7 sandstone with all GLS notches.
Rotted remains of 24" fir @ N79E, 25'
50" fir stub, 12' high, @ S14E 51'
40" fir stump, crushed by 2 logs, @ S37W 7'
40" cut fir stump @ N4W 20'

The above measurements are to the centers.
No ase work or scribing visible.

Placed Alum tag on Huffman Peak trail, which
is approx 330' east of corner



Corner is an Alum man with eye 3" above
ground. It is set in the backed out
position of a 42" log. (The 50" RT broke
off and fell on corner) Set on sandstone
on south side of monument.