

100667

BOOK 7/5 PAGE 76

LAND CORNER RECORD

Hampster Corporation
P. O. Box 368
Kelso, WA 98626

SKAMANIA County
T. 7 N.R. 5 E. W.M. Corner Code No. R-23
Segregated Surveys:
Name: South 1/4 corner--Section 24 (Wit. Cor.) Corner No.:
DLC, HES, Tract, Mining Claim, Indian Allotment, Federal Reserve, Townsite.

1. History of Corner Establishment and Subsequent Restoration:
This corner was originally established on Sept. 13, 1900, by Shelton, while working under G.L.C. contract #552. The corner was then reported as found in 1947, as indicated on the right-of-way plat for a logging road filed with the state under no. 19731. (the corner was then destroyed by the construction of the road). In 1957, Pettijohn Engineering reestablished the corner by proportion while surveying Section 25. Then, later, Weyerhaeuser again did the same, but the corner kept getting destroyed by ditch maint. on the road. Then in 1986, A. Gollersrud and R. Bogdon (HAMPSTUR CORP.), again proportioned the corner and established a Witness Corner to the 1/4 corner, as shown in the diagram below, under the direction of C. Hampton, LS. #18,087.
2. Description of Evidence Found:

FOUND:

- one Weyerhaeuser Co. reference indicating the corner being located in the ditch line of the logging road.
- searched for original cedar B.T.'s on both sides of the road, but failed to find any original evidence. The total distance on the South line of Section 24, is very close to record and if the 1/4 corner was originally set as accurate, the original B.T.'s would have been destroyed during the construction of the logging road.

3. Describe Monument, Accessories and Corollary Data to Perpetuate this Corner Location. Diagram corner and indicate meridian and reference to map of record. Surveyor's Field Book No. PS-020 Page No. 40 Date of work 1-10-1986

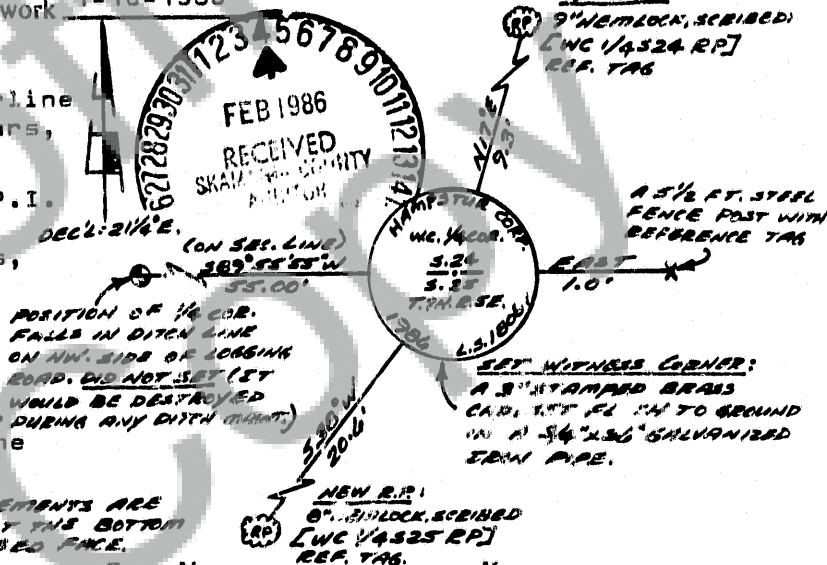
LOCATION:

- 36 feet East of the centerline of logging road which bears, N42°E and S64°W.

- N62°E--293 feet from the P.I. of a sharp curve in the logging road, which bears, N64°E & S51°E.

- On the South line of Section 24, N89°55'55"E 55.00 feet from the true 1/4 corner by proportion. (which falls in ditch line of said road).

NOTE:
ALL MEASUREMENTS ARE TO A NAIL AT THE BOTTOM OF THE SCRIBED FACE.



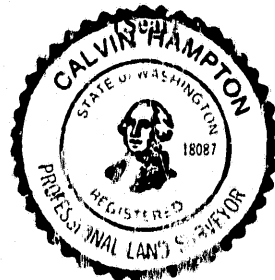
Washington Plane Coordinates: Zone, Y X
Order Accuracy. Derived From:

Pin Pointed on Photo No. Date Located at

SURVEYOR'S CERTIFICATE

This corner record correctly represents work performed by me or under my direction in compliance with the provisions of Chapter 50, Laws of 1973. Date January 16, 1986

Signature Calvin Hampton LS. #18,087
Certificate No.



AUDITOR'S CERTIFICATE

Filed for record this 4th day of FEBRUARY 1986 at 10:40 A.M. In Book 7/5 of MONUMENTS at page 76 at the request of

HAMPSTUR CORPORATION

Witnessed by J. D. New Dep.
County Auditor

Form prescribed by Bureau of Surveys and Maps pursuant to the provisions of Section 5 (2), Chapter 50, Laws of 1973.

Registered 5
Indexed, air
Filed
Filed