

*SURVEY*  
*IN THE NE 1/4*  
*OF SECTION 6, T1N, R5E, W.M.*  
*SKAMANIA COUNTY, WA.*

NARRATIVE

THE PURPOSE OF THIS SURVEY WAS TO LOCATE AND MONUMENT THE "DAVIS, ET AL TRACT" AS REFERENCED. A RANDOM TRAVERSE WAS CLOSED AND ORIENTED BETWEEN THE BRASS CAP NEAR THE NW CORNER OF SEC. 6 AND THE MONUMENT AT THE SE CORNER OF SEC. 6. THESE TWO POINTS WERE PREVIOUSLY TIED IN A TRAVERSE FROM USCGS "MT. ZION" IN 1972. THE BEARINGS SHOWN HEREON ARE THEREFORE WASHINGTON COORD SYSTEM SOUTH ZONE. OTHER TRAVERSES WERE RUN, BASED ON THE INITIAL ONE ABOVE. FIELD EQUIPMENT USED WAS A ONE-MINUTE THEODOLITE AND AN E.D.M. CORNERS WERE SET RADIALLY FROM THE ABOVE TRAVERSE POINTS.

**DEED REFERENCE**

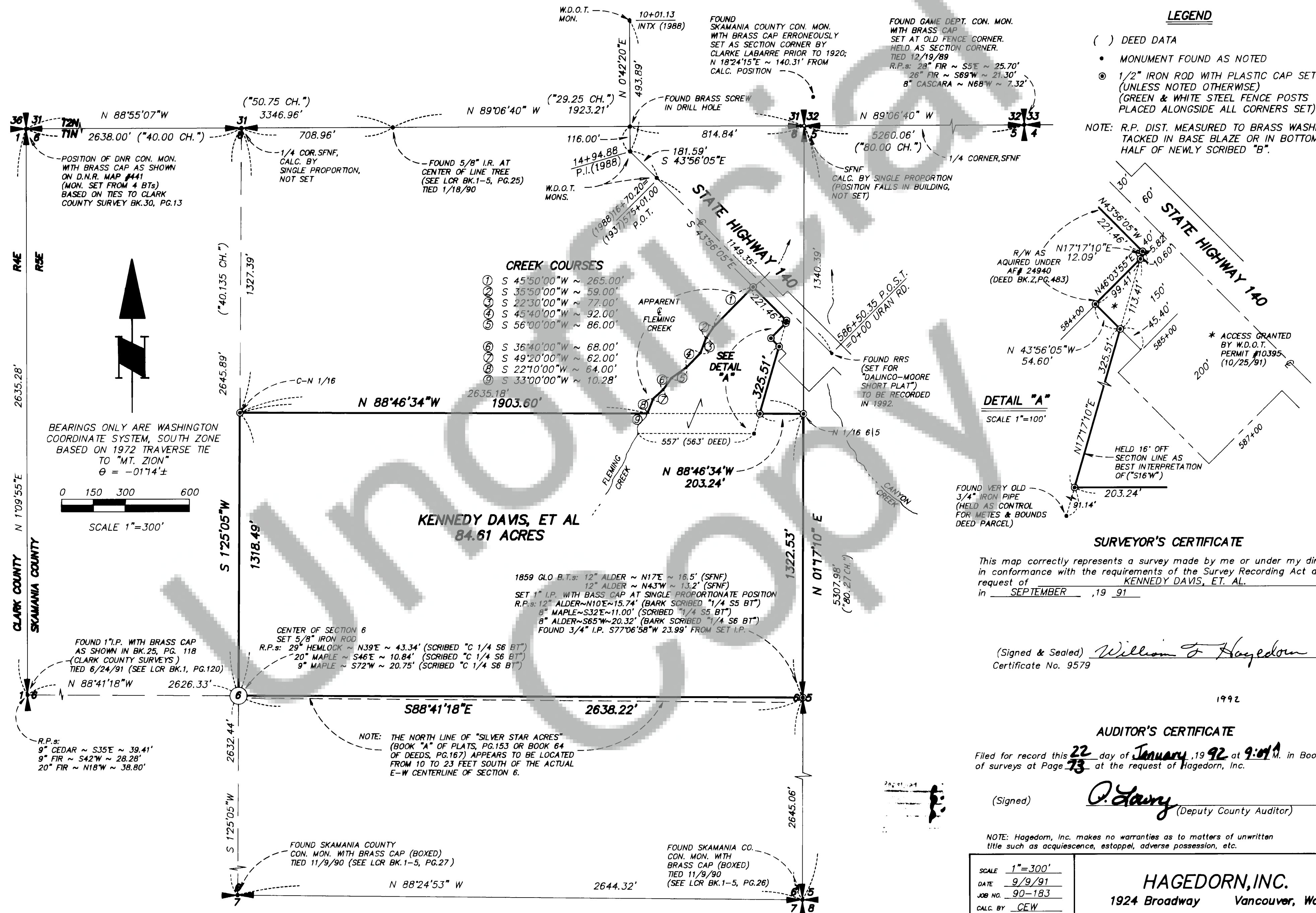
POSER TO DAVIS, ET AL  
BOOK 120, PG. 726 OF DEEDS  
RECORDED SEPT.25, 1990

**LEGEND**

( ) DEED DATA

- MONUMENT FOUND AS NOTED
- ⊙ 1/2" IRON ROD WITH PLASTIC CAP SET  
(UNLESS NOTED OTHERWISE)  
(GREEN & WHITE STEEL FENCE POSTS  
PLACED ALONGSIDE ALL CORNERS SET)

NOTE: R.P. DIST. MEASURED TO BRASS WASHER  
TACKED IN BASE BLAZE OR IN BOTTOM  
HALF OF NEWLY SCRIBED "B".



### SURVEYOR'S CERTIFICATE

This map correctly represents a survey made by me or under my direction in conformance with the requirements of the Survey Recording Act at the request of KENNEDY DAVIS, ET. AL.  
in SEPTEMBER, 19 91

(Signed & Sealed) William T. Hagedorn  
Certificate No. 9579

1992

### AUDITOR'S CERTIFICATE

Filed for record this 22 day of January, 1992 at 9:04 M. in Book 3  
of surveys at Page 73 at the request of Hagedorn, Inc.

(Signed) W. L. Lacey (Deputy County Auditor)

NOTE: Hagedorn, Inc. makes no warranties as to matters of unwritten title such as acquiescence, estoppel, adverse possession, etc.

SCALE 1"=300'  
DATE 9/9/91  
JOB NO. 90-183  
CALC. BY CEW  
DRAWN BY CC  
CHECKED BY BPT  
SHEET 1 OF 1

**HAGEDORN, INC.**  
1924 Broadway Vancouver, Wa.  
98663

Ph: (206) 696-4428 (503) 283-6778