

SEE SHEET 2 FOR SUBDIVISION OF
SEC.12, T.2 N., R.5 E., W.M.

SEE SHEET 3 FOR SUBDIVISION OF
SEC.7, T.2 N., R.6 E., W.M.

SEE SHEETS 4 & 5 FOR CORNER NOTES.

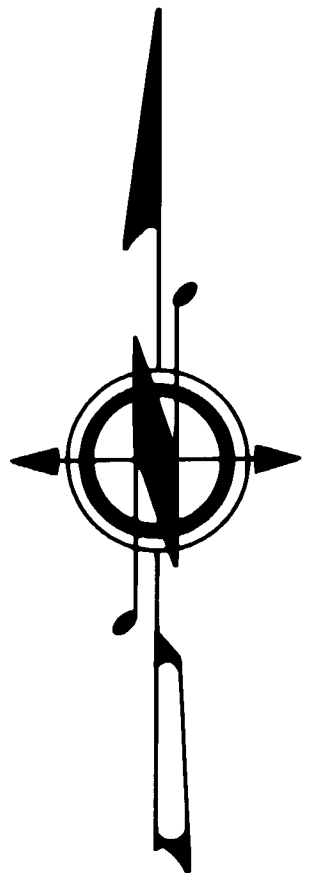
SCALE: 1"=1200'
0 600 1200 2400
W.C.S., SOUTH ZONE, NAD'83

GENERAL LAND OFFICE HISTORY:

THE NORTHEAST PORTION OF TOWNSHIP 2 NORTH,
RANGE 5 EAST AND THE NORTHWEST PORTION OF
TOWNSHIP 2 NORTH, RANGE 6 EAST, AND THE
RANGE LINE BETWEEN THE TWO TOWNSHIPS WERE
SURVEYED IN 1883 BY GLO DEPUTY SURVEYOR
CHARLES E. SEARS UNDER CONTRACT NO. 287
DATED DECEMBER 23, 1882.

METHOD OF SURVEY:

THIS SURVEY WAS DONE BY FIELD TRAVERSE USING
A KERN DKM2-AE 1 SECOND THEODOLITE WITH KERN
DM-502 AND DM-503 ELECTRONIC DISTANCE METERS
(EDM), AND A WILD DI-3000 EDM. TRAVERSES
WERE CLOSED LOOPS OR CLOSED BETWEEN KNOWN
POINTS.
CONTROL WAS DONE USING 4 TRIMBLE 4000-ST
GLOBAL POSITIONING SYSTEM (GPS) RECEIVERS.



BASIS OF BEARING:

WASHINGTON COORDINATE SYSTEM, SOUTH ZONE,
N.A.D.'83, DERIVED FROM GPS TIES TO THE
FOLLOWING CONTROL STATIONS:

NGS LARCH, RM NO. 5
NGS CLIFF 2
NGS BM G45 1933
DNR 2, T2N R6E (ITECH GPS)

TRUE NORTH: -1° 10' 52" AT THE SE CORNER OF
SECTION 12, T2N, R5E.

COMBINED GRID FACTOR: 0.9999850

DESCRIPTION OF STATE OWNERSHIP:

N1/2 OF THE NE1/4, SE1/4 OF THE NE1/4,
NW1/4, NE1/4 OF THE SW1/4 AND THE NW1/4 OF
THE SE1/4, ALL IN SECTION 12, T.2 N., R.5 E., W.M.

NE1/4, N1/2 OF THE NW1/4, SE1/4 OF THE
NW1/4, N1/2 OF THE SE1/4 AND THE SW1/4 OF
THE SE1/4, ALL IN SECTION 7, T.2 N., R.6 E., W.M.

////////// INDICATES THAT 1/2" REBARS WITH
PLASTIC "DNR PROP LINE" CAPS WERE SET AT RANDOM
INTERVALS ALONG THE NOTED SECTION OR SUB-
DIVISIONAL LINES AND ARE WITHIN +/- ONE FOOT OF
THE ACTUAL SECTION OR SUB-DIVISIONAL LINES. A
1" X 5' PVC PIPE WAS PLACED DIRECTLY OVER EACH
REBAR.

LEGEND

STANDARD DNR MONUMENTS ARE:
2 3/8" O.D. ALUMINUM ALLOY PIPE WITH "BREAKAWAY" PLASTIC BASE.
3 1/4" DIAMETER ALUMINUM ALLOY CAP STAMPED WITH PROPER CORNER
IDENTIFICATION, PERMANENT, VERTICALLY ORIENTED MAGNETS ARE
INCLUDED IN THE MONUMENT BASE AND CAP.
STANDARD DNR CAPS ARE:
3 1/4" DIAMETER ALUMINUM ALLOY DISKS WITH A VERTICALLY ORIENTED
MAGNETS AND STAMPED WITH PROPER CORNER IDENTIFICATION, SET AS
NOTED.
DNR CONCRETE MONUMENTS ARE 3" DIAMETER WITH BRASS CAP STAMPED
WITH PROPER CORNER IDENTIFICATION.
DNR IRON PIPES ARE 1" DIAMETER WITH BRASS CAP STAMPED WITH
PROPER CORNER IDENTIFICATION.

G.L.O. CORNER SYMBOLS:

FOUND OR ACCEPTED. Registered
Indexed, Dir
Indirect
Filed
Mailed

CALCULATED - SET.

CALCULATED - NOT SET.

S.12 T2N R5E	S.7 T2N R6E
X X X X X	X X X X X
X X X X X	X X X X X
X X X X X	X X X X X
X X X X X	X X X X X
X X X X X	X X X X X
X X X X X	X X X X X
X X X X X	X X X X X

INDEX GRAPH

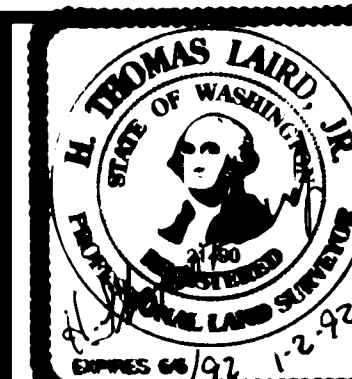


AUDITOR'S CERTIFICATE
FILED FOR RECORD THIS 13 DAY OF January 1992
AT 2:30 P.M. IN BOOK 3 OF SURVEYS AT PAGE 68-72
AT THE REQUEST OF THE WASHINGTON STATE DEPARTMENT OF
NATURAL RESOURCES.
112735
AUDITOR'S FILE NUMBER

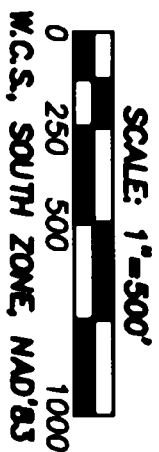
Gary M. Olson
P. Labay-Deputy
SKAMANIA CO AUDITOR

SURVEYOR'S CERTIFICATE

THIS MAP CORRECTLY REPRESENTS A SURVEY MADE BY ME OR
UNDER MY DIRECTION IN CONFORMANCE WITH THE REQUIREMENTS
OF THE SURVEY RECORDING ACT OF 1973 AT THE REQUEST OF
THE WASHINGTON STATE DEPARTMENT OF NATURAL RESOURCES
IN January 1992
H. Thomas Laird Jr.
H. THOMAS LAIRD JR., PLS
21490
CERTIFICATE NUMBER



A SURVEY IN
SECTION 12, T.2 N., R.5 E. & SECTION 7, T.2 N., R.6 E., W.M.
SURVEYED BY:
H. THOMAS LAIRD JR., PLS
DRAWN BY:
B. ERIK NEDERGARD
DATE:
DECEMBER 1991
STATE OF WASHINGTON
DEPARTMENT OF NATURAL RESOURCES
CHECKED BY:
LAWRENCE J. HOIT, PLS
SHEET 1 OF 5.
F.M. # 801



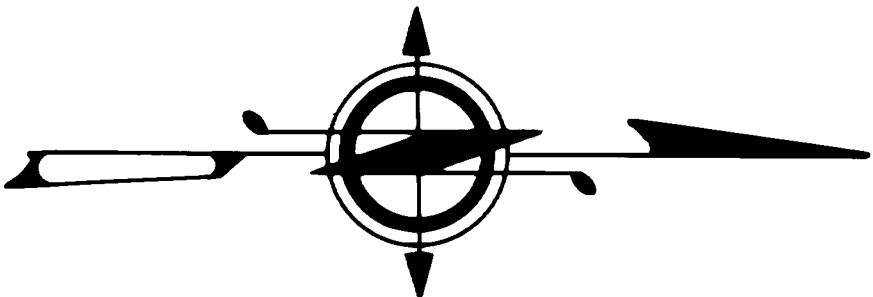
N.C.S. SOUTH ZONE, NAD83

GENERAL LAND OFFICE HISTORY:

THE NORTHEAST PORTION OF TOWNSHIP 2 NORTH, RANGE 5 EAST AND THE NORTHWEST PORTION OF TOWNSHIP 2 NORTH, RANGE 6 EAST AND THE RANGE LINE BETWEEN THE TWO TOWNSHIPS WERE SURVEYED IN 1883 BY CLO DEPUTY SURVEYOR CHARLES E. SEARS UNDER CONTRACT NO. 287 DATED DECEMBER 23, 1882.

METHOD OF SURVEY:

THIS SURVEY WAS DONE BY FIELD TRAVERSE USING A KERN DMM-2-AE 1 SECOND THEODOLITE WITH KERN DM-502 AND DM-503 ELECTRONIC DISTANCE METERS (EDM) AND A WILD DI-3000 EDM. TRAVERSES WERE CLOSED LOOPS OR CLOSED BETWEEN KNOWN POINTS. CONTROL WAS DONE USING 4 TRIMBLE 4000-ST GLOBAL POSITIONING SYSTEM (GPS) RECEIVERS.



BASIS OF BEARING:

WASHINGTON COORDINATE SYSTEM, SOUTH ZONE, NAD 83, DERIVED FROM GPS TIES TO THE FOLLOWING CONTROL STATIONS:
NOS LARCH, RM NO. 5
NOS CLIFF 2
NOS BM G45 1933

DMM 2, 12M ROE (TECH GPS)

TRUE NORTH: -1°10' 52" AT THE SE CORNER OF SECTION 12, 12N, R5E.

COMBINED GRID FACTOR: 0.9999850

DESCRIPTION OF STATE OWNERSHIP:

N 1/2 OF THE NE 1/4, SE 1/4 OF THE NE 1/4, NW 1/4, NE 1/4 OF THE SW 1/4 AND THE NW 1/4 OF THE SE 1/4, ALL IN SECTION 12, 12N, R5E.

////// INDICATES THAT 1/2" REBAR WITH PLASTIC DNR PROP LINE CAPS WERE SET AT RANDOM INTERVALS ALONG THE NOTED SECTION OR SUB-DIVISIONAL LINES AND ARE WITHIN +/- ONE FOOT OF THE ACTUAL SECTION OR SUB-DIVISIONAL LINES. A 1" X 5" PVC PIPE WAS PLACED DIRECTLY OVER EACH REBAR.

LEGEND

STANDARD DNR MONUMENTS ARE:

- 2 3/8" O.D. ALUMINUM ALLOY PIPE WITH "BREAKAWAY" PLASTIC BASE.
- 3 1/4" DIAMETER ALUMINUM ALLOY CAP STAMPED WITH PROPER CORNER IDENTIFICATION, PERMANENT, VERTICALLY ORIENTED MAGNETS ARE INCLUDED IN THE MONUMENT BASE AND CAP.
- STANDARD DNR CAPS ARE:
- 3 1/4" DIAMETER ALUMINUM ALLOY DISKS WITH A VERTICALLY ORIENTED MAGNETS AND STAMPED WITH PROPER CORNER IDENTIFICATION, SET AS NOTED.

DNR CONCRETE MONUMENTS ARE 3" DIAMETER WITH BRASS CAP STAMPED WITH PROPER CORNER IDENTIFICATION.
DNR IRON PIPES ARE 1" DIAMETER WITH BRASS CAP STAMPED WITH PROPER CORNER IDENTIFICATION.

G.L.O. CORNER SYMBOLS:

- FOUND OR ACCEPTED.
- CALCULATED - SET.
- CALCULATED - NOT SET.

SECTION 12

X	X	X	X
X	X	X	X
X	X	X	X
X	X	X	X

INDEX GRAPH

A SURVEY IN

SECTION 12, TOWNSHIP 2 NORTH, RANGE 5 EAST, W.M.

STATE OF WASHINGTON

DEPARTMENT OF NATURAL RESOURCES

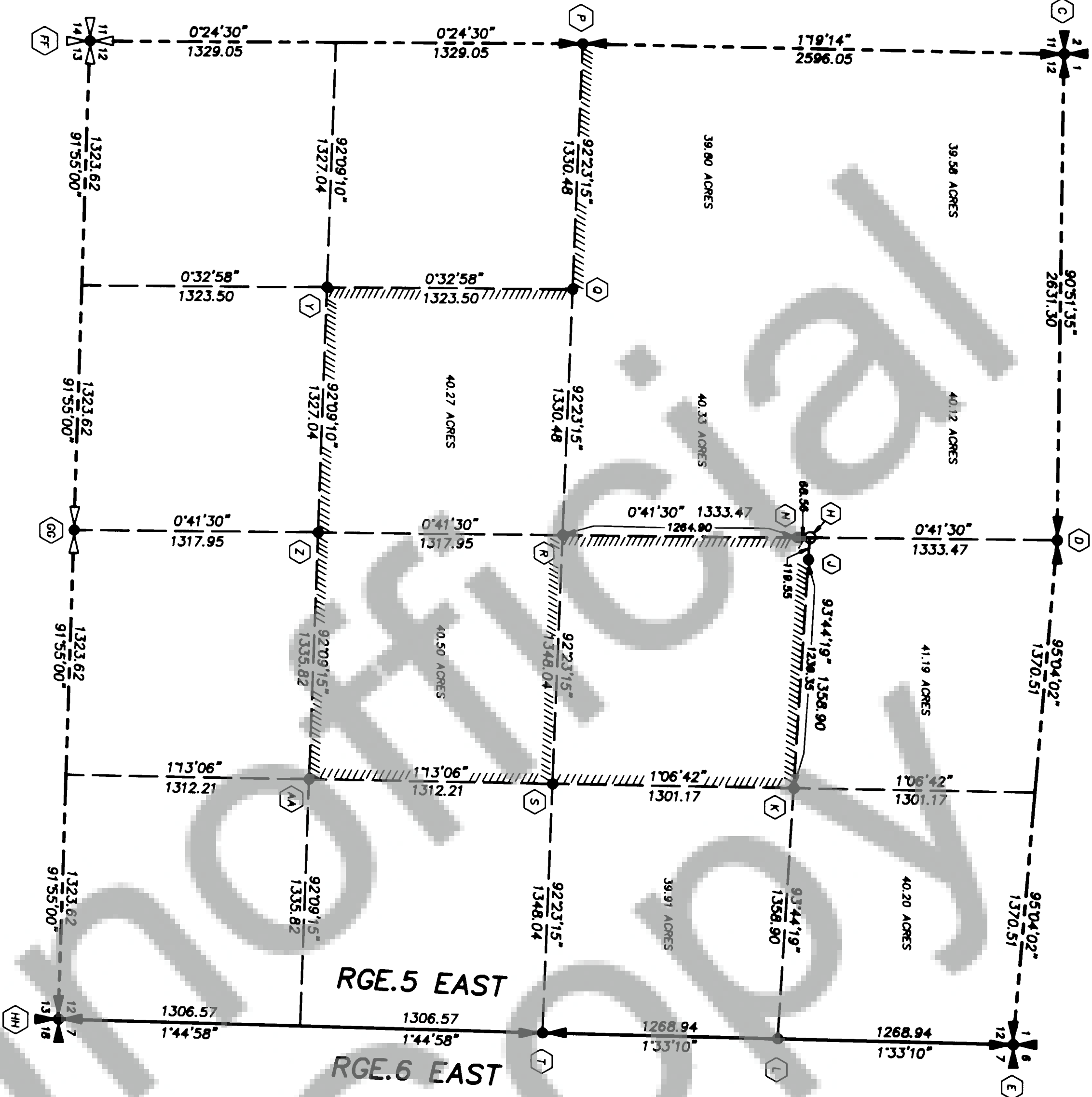
SURVEYED BY: H. THOMAS LAIRD JR., PLS	CHECKED BY: LAWRENCE J. HOYT, PLS
DRAWN BY: B. ENIK NEDERHARD	SHEET 2 OF 5.
DATE: DECEMBER 1991	F.M.# 801

SURVEYOR'S CERTIFICATE

FILED FOR RECORD THIS _____ DAY OF _____, 19____
AT _____ M. IN BOOK _____ OF SURVEYS AT PAGE _____
AT THE REQUEST OF THE WASHINGTON STATE DEPARTMENT OF
NATURAL RESOURCES.

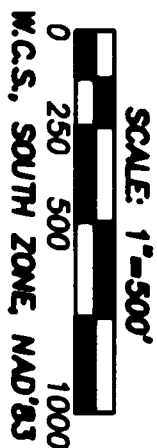
AUDITOR'S FILE NUMBER _____ SKAMANIA CO. AUDITOR _____

SEE SHEET 1 FOR ENTIRE "UKELELE SURVEY" PROJECT.
SEE SHEET 3 FOR SUBDIVISION OF SEC.7, T.2 N., R.6 E., W.M.
SEE SHEETS 4 & 5 FOR CORNER NOTES.



112735

BOOK 3 PAGE 70



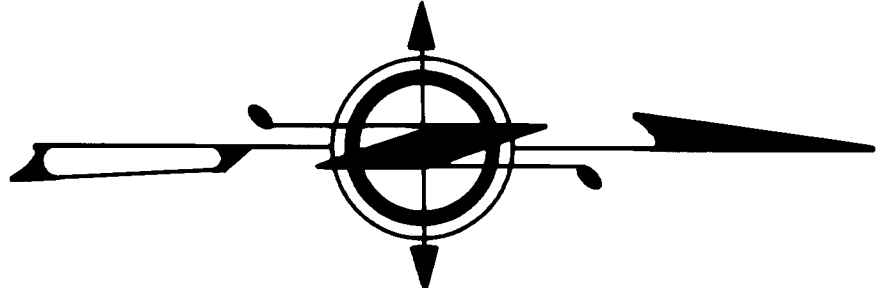
W.C.S., SOUTH ZONE, NAD'83

GENERAL LAND OFFICE HISTORY:

THE NORTHEAST PORTION OF TOWNSHIP 2 NORTH, RANGE 5 EAST AND THE NORTHWEST PORTION OF TOWNSHIP 2 NORTH, RANGE 6 EAST, AND THE RANGE LINE BETWEEN THE TWO TOWNSHIPS WERE SURVEYED IN 1983 BY GLO DEPUTY SURVEYOR CHARLES E. SEARS UNDER CONTRACT NO. 287 DATED DECEMBER 23, 1982.

METHOD OF SURVEY:

THIS SURVEY WAS DONE BY FIELD TRAVERSE USING A KERN DM2-AE 1 SECOND THEODOLITE WITH KERN DM-502 AND DM-503 ELECTRONIC DISTANCE METERS (EDM), AND A WILD DI-3000 EDM. TRAVERSES WERE CLOSED LOOPS OR CLOSED BETWEEN KNOWN POINTS. CONTROL WAS DONE USING 4 TRIANGLE 4000-ST GLOBAL POSITIONING SYSTEM (GPS) RECEIVERS.



BASIS OF BEARING:

WASHINGTON COORDINATE SYSTEM, SOUTH ZONE, N.A.D. 83, DERIVED FROM GPS TIES TO THE FOLLOWING CONTROL STATIONS:

NGS LARCH, RM NO. 5
NGS CLIFF 2
NGS BM G45 1933
DNR 2, T2N R6E (ITECH GPS)

TRUE NORTH: -1° 10' 52" AT THE SE CORNER OF SECTION 12, T2N, R5E.

COMBINED GRID FACTOR: 0.9999850

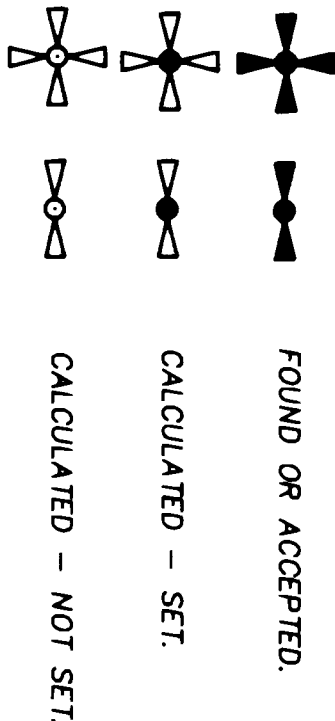
DESCRIPTION OF STATE OWNERSHIP:

NE 1/4, N1/2 OF THE NW 1/4, SE 1/4 OF THE NW 1/4, N1/2 OF THE SE 1/4 AND THE SW 1/4 OF THE SE 1/4, ALL IN SECTION 7, T.2 N., R.5 E., W.M.

LEGEND

STANDARD DNR MONUMENTS ARE:
3 3/8" O.D. ALUMINUM ALLOY PIPE WITH "BREAKAWAY" PLASTIC BASE
3 1/4" DIAMETER ALUMINUM ALLOY CAP STAMPED WITH PROPER CORNER IDENTIFICATION. PERMANENT, VERTICALLY ORIENTED MAGNETS ARE INCLUDED IN THE MONUMENT BASE AND CAP.
STANDARD DNR CAPS ARE:
3 1/4" DIAMETER ALUMINUM ALLOY DISKS WITH A VERTICALLY ORIENTED MAGNETS AND STAMPED WITH PROPER CORNER IDENTIFICATION, SET AS NOTED
DNR CONCRETE MONUMENTS ARE 3" DIAMETER WITH BRASS CAP STAMPED WITH PROPER CORNER IDENTIFICATION.
DNR IRON PIPES ARE 1" DIAMETER WITH BRASS CAP STAMPED WITH PROPER CORNER IDENTIFICATION.

G.L.O. CORNER SYMBOLS:



SECTION 7

X	X	X	X
X	X	X	X
X	X	X	X
X	X	X	X

INDEX GRAPH

A SURVEY IN

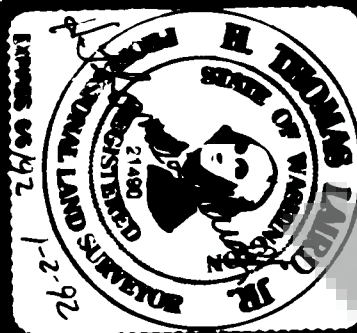
SECTION 7, TOWNSHIP 2 NORTH, RANGE 6 EAST, W.M.

STATE OF WASHINGTON

DEPARTMENT OF NATURAL RESOURCES

CHECKED BY:
LAWRENCE L. HOLT, PLS
SHEET 3 OF 5
F.M.# 801

SURVEYED BY:
H. THOMAS LAIRD JR., PLS
DRAWN BY:
B. ERIK NEDERGAARD
DATE:
DECEMBER 1991



SURVEYOR'S CERTIFICATE

THIS MAP CORRECTLY REPRESENTS A SURVEY MADE BY ME OR UNDER MY DIRECTION IN CONFORMANCE WITH THE REQUIREMENTS OF THE SURVEY RECORDING ACT OF 1973 AT THE REQUEST OF THE WASHINGTON STATE DEPARTMENT OF NATURAL RESOURCES IN clawson 1992.

H. THOMAS LAIRD JR., PLS

CERTIFICATE NUMBER

21490

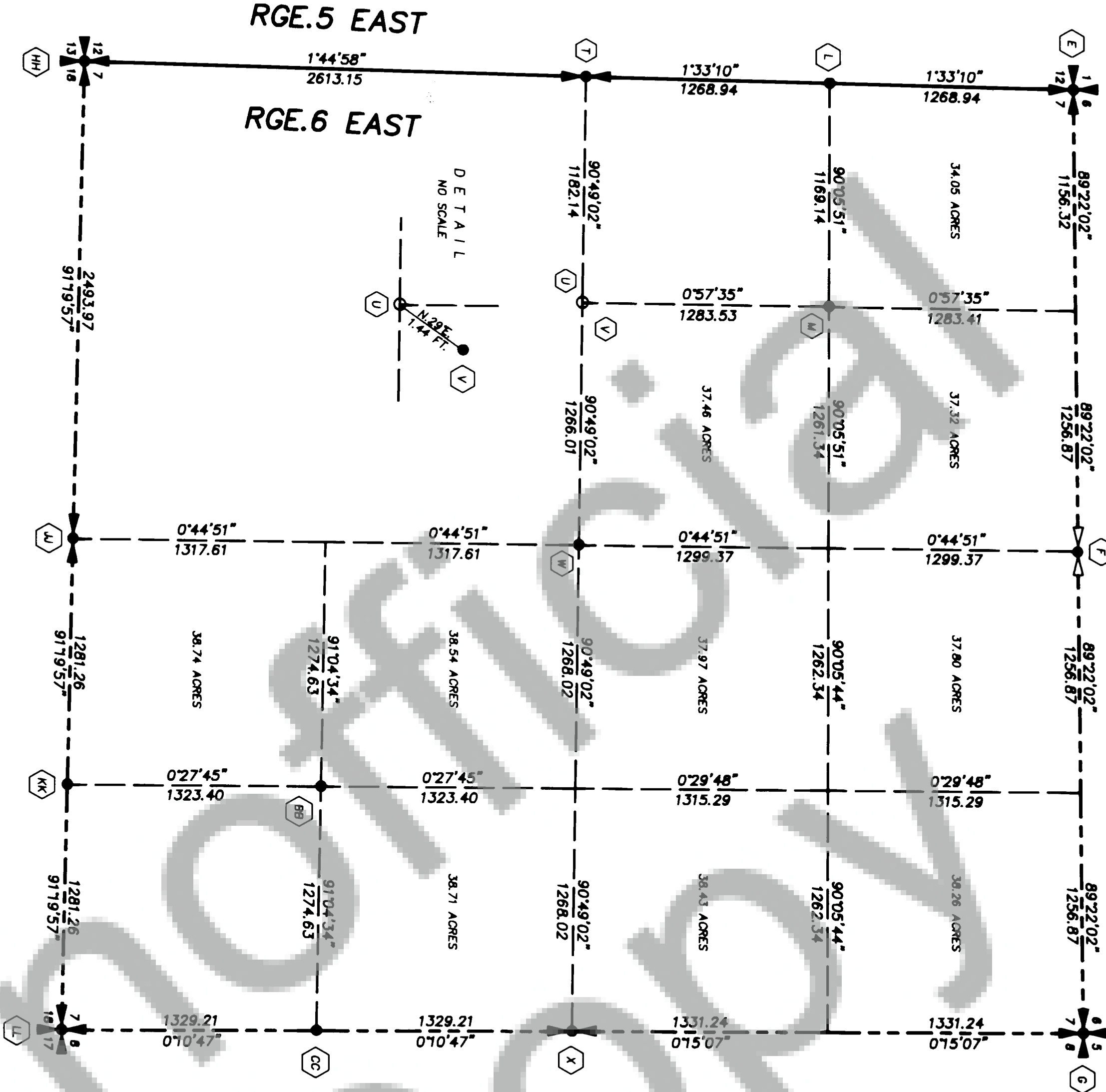
AUDITOR'S CERTIFICATE

FILED FOR RECORD THIS _____ DAY OF _____ 19____ AT _____ M. IN BOOK _____ OF SURVEYS AT PAGE _____ AT THE REQUEST OF THE WASHINGTON STATE DEPARTMENT OF NATURAL RESOURCES.

AUDITOR'S FILE NUMBER

SKAMANIA CO. AUDITOR

SEE SHEET 1 FOR ENTIRE "UKELELE SURVEY" PROJECT
SEE SHEET 2 FOR SUBDIVISION OF SEC.12, T.2 N., R.5 E., W.M.
SEE SHEETS 4 & 5 FOR CORNER NOTES.



(A) NORTHEAST SECTION 1 (TOWNSHIP CORNER)

ACCEPTED CORNER
FD: SKAMANIA COUNTY ENGINEER'S DEPARTMENT 1" IRON PIPE WITH STAMPED BRASS CAP. DATE SET IS UNKNOWN. 57" FIR BT STUMP AT S&E. 4.25 FEET TO FACE (NO SCRIBING).
THIS CORNER WAS USED ON ROS FILED IN BOOK 2 OF SURVEYS AT PAGE 271. RECORDS OF SKAMANIA COUNTY.
ON 8-25-91, THIS SURVEY FOUND THE PIPE TO BE PRIMARILY SET AND NOTED THE FOLLOWING REFERENCES:
4 RP'S
DNR CARSONITE WITNESS POST AT NORTH, 3 FEET.
57" FIR STUMP (BT) AT S&E. 5.38 TO ALUM NAIL IN CORE WOOD ON TOP.
25" FIR AT S&W 31.70 FEET TO ALUM NAIL IN SE SIDE.
14" ALDER AT N10W 40.46 FEET TO ALUM NAIL IN EAST SIDE.
FB 600.33B PAGE 47

(B) EAST 1/4 CORNER SECTION 1

ACCEPTED CORNER
FD: 1/2" REBAR WITH PLASTIC CAP AT N.3270.02'E. 0.41 FEET FROM THEORETICAL CALCULATED POSITION. SET BY B.L. SHINCKE. PLS #13518 AT A SINGLE PROPORTION POSITION AS SHOWN IN BOOK 2 OF SURVEYS AT PAGE 271. RECORDS OF SKAMANIA COUNTY.
ON 12-3-91, THIS SURVEY FOUND THE REBAR TO BE PRIMARILY SET AND NOTED THE FOLLOWING REFERENCES:
4 RP'S
12" FIR AT N74E 9.36 FEET TO ALUM NAIL IN NORTH SIDE.
11" FIR AT S16E 7.20 FEET TO ALUM NAIL IN WEST SIDE.
8" FIR AT N43W 5.71 FEET TO ALUM NAIL IN SW SIDE.
6" FIR (DEAD) AT N2W 2.03 FEET TO ALUM NAIL FACING CORNER.
FB 600.33C PAGE 8

(C) NORTHWEST CORNER SECTION 12

ACCEPTED CORNER
FD: 3/4" x 5 (+/-) IRON PIPE ON THE GROUND IN THE VICINITY OF THE CORNER. LARGE FIR STUMP BT UNDER ROAD SDE&CAST, AT N14E 13.86 FEET TO FACE. 30" FIR BT STUMP AT S81W 31.02 FEET TO FACE.
BOOK "B" OF PLATS, AT PAGE 4, SHOWS A SURVEY BY OLSON ENGINEERING THAT NOTES AN IRON PIPE WITH 3 BT'S, CREEK CALL. THIS DNR SURVEY RETRACED THE OLSON SURVEY TO ARRIVE AT THE CORNER LOCATION AND FOUND THE EVIDENCE LISTED ABOVE. THE FIR BT AT N24W 60 LINKS WAS NOT FOUND - IT IS MOST LIKELY DEEPLY BURIED BY ROAD SIDE CAST. ON 8-21-91, THIS SURVEY SET A DNR ALUMINUM MONUMENT WITH STAMPED ALUMINUM CAP AT THE INTERSECTION OF THE OLD DISTANCES FROM THE FACES OF THE TWO BT'S AND NOTED THE FOLLOWING REFERENCES:
5 RP'S
DNR CARSONITE WITNESS POST AT NORTH, 3 FEET. LARGE FIR BT STUMP, MOSTLY BURIED BY ROAD SDE&CAST, AT N14E 14.00 FEET TO ALUM NAIL IN FACE.
24" FIR AT S72E 38.68 FEET TO ALUM NAIL IN SOUTH SIDE.
3" x 7" x 4.5" HIGH BOULDER AT S7E 14.59 FEET TO FIR NAIL ON HIGH POINT OF ROCK.
30" FIR BT STUMP AT S81W 30.26 FEET TO ALUM NAIL IN FLUTE ON EAST SIDE.
FB 600.33B PAGE 23

(D) NORTH 1/4 CORNER SECTION 12

ACCEPTED CORNER
FD: DNR 4" x 4" CONCRETE MONUMENT SET IN 1981 BY BEN LOWN AT OLD DISTANCE AND BEARING FROM A 50" FIR BT STUMP WITH SCRIBING. A 52" FIR BT STUMP AT N4E 35.54 FEET TO NAIL IN FACE. NO SCRIBING.
ON 8-25-91, THIS SURVEY FOUND THE MONUMENT TO BE PRIMARILY SET AND NOTED THE FOLLOWING REFERENCES:
3 RP'S
DNR CARSONITE WITNESS POST AT NORTH, 3 FEET.
5" FIR AT N76E 37.31 FEET TO ALUM NAIL IN NORTH SIDE.
22" FIR AT SIZE 14.26 FEET TO ALUM NAIL IN WEST SIDE.
FB 600.33B PAGE 48

(E) NORTHEAST CORNER SECTION 12

ACCEPTED CORNER
FD: 1/2" INCH REBAR WITH PLASTIC CAP AT N.61010.7'W. 0.56 FEET FROM THEORETICAL CALCULATED POSITION. SET BY B.L. SHINCKE. PLS #13518 AT A SINGLE PROPORTIONED POSITION DURING HIS SURVEY OF SECTION 7, T.2 N., R.6 E., WHICH IS RECORDED IN BOOK 2 OF SURVEYS AT PAGE 271. RECORDS OF SKAMANIA COUNTY.
THIS CORNER WAS PROPORTIONED USING THE CORNERS ONE MILE NORTH AND 1/2 MILE SOUTH. THE ACTUAL LENGTH OF THIS 1 1/2 MILE DISTANCE IS ALMOST 5 CHAINS SHORT OF THE OLD STATED 120 CHAINS. BECAUSE OF THIS DISCREPANCY, EXTENSIVE MAPPING OF THE OLD TERRAIN CALLS WAS DONE IN AN EFFORT TO ISOLATE A PROBABLE 5 CHAIN ERROR. THE FINAL RESULT WAS THAT IT WAS NOT POSSIBLE TO ISOLATE THE 5 CHAINS, AND THE OLD TERRAIN CALLS WERE INACCURATE ENOUGH THAT THEY SHOULD NOT BE USED TO SET THE CORNER.
AT S&E, 182 FEET FROM THE REBAR, THERE IS A 66" FIR SNAG WITH A DIVISION OF FORESTRY TAG ON IT. AN OLD FACE ON THE SW SIDE. AND FOUR DEEP NOTCHES IN THE NORTH SIDE. AN ATTEMPT WAS MADE TO LOCATE THE ORIGINAL CORNER USING THIS SNAG AS THE NE BT, BUT NO EVIDENCE OF THE CORNER OR THE OTHER 3 BT'S COULD BE FOUND. POSITIONING THE CORNER FROM THE SNAG WOULD NOT FIT ANY OLD TERRAIN CALLS IN ANY DIRECTION.
ON 12-2-91, THIS SURVEY FOUND THE REBAR TO BE PRIMARILY SET IN THE GROUND AND NOTED THE FOLLOWING REFERENCES:
3 RP'S
12" FIR AT N49E 14.22 FEET TO ALUM NAIL IN NW SIDE.
9" FIR AT S24W 29.16 FEET TO ALUM NAIL IN WEST SIDE.
10" FIR AT N79W 26.84 FEET TO ALUM NAIL IN SOUTH SIDE.
FB 600.33C PAGE 3

(F) NORTH 1/4 CORNER SECTION 7

CALCULATED CORNER
ON 8-21-91, THIS SURVEY SEARCHED FOR ANY EVIDENCE OF THE ORIGINAL CORNER. THE SEARCH WAS CONDUCTED IN THE VICINITY OF SHINCKE'S SINGLE PRO-PORTIONED CORNER THAT IS SHOWN IN BOOK 2 OF SURVEYS AT PAGE 271. RECORDS OF SKAMANIA COUNTY.
FINDING NO ORIGINAL EVIDENCE, THIS SURVEY CALCULATES THE POSITION BY SINGLE PRO-PORTION BUT DOES NOT SET THE CORNER. THIS SURVEY DID NOT TRAVERSE TO SHINCKE'S CORNER.

(G) NORTHEAST CORNER SECTION 7

ACCEPTED CORNER
ON 7-31-91, THIS SURVEY FOUND THE CORNER AND REFERENCES TO BE THE SAME AS SHOWN ON THE DNR SURVEY OF SECTION 8, WHICH IS DNR FINAL MAP NO. 680 AND IS RECORDED IN BOOK 3 OF SURVEYS AT PAGE 2. RECORDS OF SKAMANIA COUNTY.
FB 600.30, PAGE 53 (1988)

(H) CENTER-NORTH 1/16 CORNER SECTION 12

CALCULATED CORNER
THIS CORNER WAS NOT MONUMENTED BECAUSE IT FELL WITHIN THE WASHINGTON RIVER. REFERENCE MONUMENTS WERE SET TO THE EAST AND SOUTH ON THE SUBDIVISIONAL LINES. SEE CORNERS "J" AND "N" BELOW.

(I) RM 1 TO CN 1/16 CORNER SECTION 12

CALCULATED CORNER
ON 11-13-91, THIS SURVEY SET A DNR ALUMINUM MONUMENT WITH STAMPED ALUMINUM CAP 119.55 FEET EASTERLY OF THE CN 1/16 CORNER SECTION 12. ON THE SUBDIVISIONAL LINE AS A REFERENCE.
THE MONUMENT, THE FOLLOWING REFERENCES TO THE RM WERE NOTED:
4 RP'S
17" ALDER AT N44E 11.87 FEET TO ALUM NAIL IN SE SIDE OF THE SE ALDER IN A GROUP OF THREE.
DNR CARSONITE WITNESS POST AT EAST, 3 FEET.
45" CEDAR AT S&E 19.35 FEET TO ALUM NAIL IN NE SIDE.
44" CEDAR STUMP AT S55W 37.93 FEET TO ALUM NAIL IN FACE.
FB 600.33B PAGE 63

(K) NORTHEAST 1/16 CORNER SECTION 12

CALCULATED CORNER
ON 11-20-91, THIS SURVEY SET A DNR STAMPED ALUMINUM CAP WITH MACHET IN CONCRETE IN ROCK ON THE SIDE OF THE CUT BANK ON OLD ROAD GRADE. THE FOLLOWING REFERENCES WERE NOTED:
4 RP'S
13" FIR AT N60E 8.65 FEET TO ALUM NAIL IN NW SIDE.
7" FIR AT S&E 4.14 FEET TO ALUM NAIL IN SW SIDE.
DNR CARSONITE WITNESS POST AT WEST, 5 FEET.
11" FIR AT N43W 3.88 FEET TO ALUM NAIL IN NE SIDE.
FB 600.33B PAGE 67

(L) SOUTHWEST CORNER LOT 1, SECTION 7

CALCULATED CORNER
FD: 1/2" REBAR WITH PLASTIC CAP AT N16E 1.00 FEET SET BY LS 13518, SHINCKE. NOT ACCEPTED.
ON 12-2-91, THIS SURVEY SET A DNR ALUMINUM MONUMENT WITH STAMPED ALUMINUM CAP AS THE SOUTHWEST CORNER OF LOT 1, SECTION 7, AND NOTED THE FOLLOWING REFERENCES:
4 RP'S
23" FIR AT N6E 9.85 FEET TO ALUM NAIL IN SOUTH SIDE.
DNR CARSONITE WITNESS POST AT EAST, 3 FEET.
8" FIR AT S22E 2.83 FEET TO ALUM NAIL ON WEST SIDE.
20" FIR AT N70W 16.59 FEET TO ALUM NAIL IN NORTH SIDE.
FB 600.33C PAGE 2

(M) SOUTHEAST CORNER LOT 1 SECTION 7

CALCULATED CORNER
FD: 1/2" REBAR WITH PLASTIC CAP AT N17E 1.30 FEET, SET BY LS 13518, SHINCKE. NOT ACCEPTED.
ON 12-3-91, THIS SURVEY SET A DNR ALUMINUM MONUMENT WITH STAMPED ALUMINUM CAP AS THE SOUTHEAST CORNER TO LOT 1, SECTION 7. THE FOLLOWING REFERENCES WERE NOTED:
3 RP'S
DNR CARSONITE WITNESS POST AT NORTH, 3 FEET.
29" FIR AT N68W 43.14 FEET TO ALUM NAIL IN SOUTH SIDE.
21" FIR AT N3W 10.52 FEET TO ALUM NAIL IN WEST SIDE.
27" FIR AT N3W 10.52 FEET TO ALUM NAIL IN WEST SIDE.
FB 600.33C PAGE 5

(N) RM 2 TO CN 1/16 SECTION 12

CALCULATED CORNER
ON 11-13-91, THIS SURVEY SET A DNR ALUMINUM MONUMENT WITH STAMPED ALUM CAP AS A REFERENCE MONUMENT TO THE CN 1/16 CORNER OF SECTION 12. THIS RM IS 68.56 FEET SOUTHERLY OF THE CN 1/16 CORNER AND IS ON THE SUBDIVISIONAL LINE. THE FOLLOWING REFERENCES TO THE RM WERE NOTED:
4 RP'S
DNR CARSONITE WITNESS POST AT NORTH, 3 FEET.
22" ALDER AT N&E 8.89 FEET TO ALUM NAIL IN EAST SIDE.
44" CEDAR STUMP AT S71E 19.01 FEET TO ALUM NAIL IN FLUTE FACING CORNER.
23" ALDER AT S88W 11.36 FEET TO ALUM NAIL IN SOUTH SIDE.
FB 600.33B PAGE 65

(P) WEST 1/4 CORNER SECTION 12

ACCEPTED CORNER
FD: 1/2" REBAR (NO CAP) SET BY OLSON ENGINEERING AS SHOWN IN BOOK B OF PLATS AT PAGE 4. THIS PLAT STATES THAT THE CORNER WAS SET BY CALLS.
OLSON ENGINEERING'S NARRATIVE OF HOW THE CORNER WAS SET (ON FILE IN OLSON'S OFFICE) STATES THAT THE CORNER WAS SET IN THE LOCATION THAT WOULD BEST SATISFY THE RIVER CALL. THE BEGIN ASCENT CALL, AND THE CREEK CALL.
ON 8-28-91, THIS SURVEY VISITED THE CORNER AND ADDED A STAMPED 1 1/2" ALUM CAP TO THE REBAR. THE FOLLOWING REFERENCES WERE NOTED:
4 RP'S
DNR CARSONITE WITNESS POST AT NORTH, 3 FEET.
8" ALDER AT S87E 4.16 FEET TO ALUM NAIL IN NORTH SIDE.
12" FIR AT S13W 21.89 FEET TO ALUM NAIL IN WEST SIDE.
20" FIR AT N42W 12.56 FEET TO ALUM NAIL IN NE SIDE.
FB 600.33B PAGE 49

(O) CENTER-WEST 1/16 CORNER SECTION 12

CALCULATED CORNER
ON 11-7-91, THIS SURVEY SET A DNR ALUMINUM MONUMENT WITH STAMPED ALUMINUM CAP AS THE CENTER-WEST 1/16 CORNER OF SECTION 12. THE FOLLOWING REFERENCES WERE NOTED:
4 RP'S
DNR CARSONITE WITNESS POST AT NORTH, 3 FEET.
7" FIR AT N26E 9.33 FEET TO ALUM NAIL IN EAST SIDE.
16" FIR AT S&E 20.14 FEET TO ALUM NAIL IN WEST SIDE.
19" FIR AT N51W 14.08 FEET TO ALUM NAIL IN NE SIDE.
FB 600.33B PAGE 59

(R) CENTER 1/4 CORNER SECTION 12

CALCULATED CORNER
ON 11-14-91, THIS SURVEY SET A DNR ALUMINUM MONUMENT WITH STAMPED ALUMINUM CAP AS THE CENTER 1/4 CORNER OF SECTION 12. 23 FEET WEST OF THE CENTERLINE OF AN OLD ROAD. THE FOLLOWING REFERENCES WERE NOTED:
4 RP'S
HEMLOCK AT N26E 5.23 FEET TO ALUM NAIL IN WEST SIDE.
19" FIR AT N86E 12.64 FEET TO ALUM NAIL IN SE SIDE.
DNR CARSONITE WITNESS POST AT EAST, 3 FEET.
26" FIR AT S&E 10.30 FEET TO ALUM NAIL IN EAST SIDE.
FB 600.33B PAGE 51

(S) CENTER-EAST 1/16 CORNER SECTION 12

CALCULATED CORNER
ON 11-5-91, THIS SURVEY SET A DNR ALUMINUM MONUMENT WITH STAMPED ALUMINUM CAP AS THE CENTER-EAST 1/16 CORNER OF SECTION 12. THE FOLLOWING REFERENCES WERE NOTED:
4 RP'S
DNR CARSONITE WITNESS POST AT NORTH, 3 FEET.
19" FIR AT NORTH, 11.88 FEET TO ALUM NAIL IN WEST SIDE.
26" FIR AT S16W 19.56 FEET TO ALUM NAIL IN WEST SIDE.
23" FIR AT WEST, 22.05 FEET TO ALUM NAIL IN SOUTH SIDE.
FB 600.33B PAGE 53

(T) EAST 1/4 CORNER SECTION 12

ACCEPTED CORNER
FD: 4" x 4" DNR CONCRETE MONUMENT SET IN 1964 AS A WITNESS CORNER, DISTURBED BY LOGGING ACTIVITY. 30" CEDAR CORNER TREE. HIGH STUMPED.
IN 1964, DNR EMPLOYEE BOB JACKSON FOUND A 28" CEDAR TREE (DEAD) MARKED WITH BLAZES ON THE NORTH, SOUTH, AND EAST SIDES. HE FOUND A ROTTED HEMLOCK BT STUB AT N53-30E, 18.5 FEET TO THE OLD FACE. HE SET THE CONCRETE MONUMENT 1 FOOT 6 INCHES NORTH FROM THE CENTER OF THE CORNER TREE. THIS MONUMENT WAS DISTURBED BY LOGGING ACTIVITY IN 1991.
ON 8-24-91, THIS SURVEY RESET THE CONCRETE MONUMENT 1.96 FEET NORTH OF A FINISH NAIL IN THE NORTH FACE OF THE CEDAR CORNER TREE. THE FOLLOWING REFERENCES TO THE WITNESS CORNER WERE NOTED:
3 RP'S
10" FIR AT NORTH, 3.14 FEET TO ALUM NAIL IN WEST SIDE.
16" FIR STUMP AT N74E 15.18 FEET TO ALUM NAIL IN SOUTH SIDE.
DNR CARSONITE WITNESS POST AT EAST, 3 FEET.
FB 600.33B PAGE 42

(U) SOUTHEAST CORNER LOT 2 SECTION 7

CALCULATED CORNER
FD: 1/2" REBAR WITH PLASTIC CAP AT N26E 1.44 FEET, SET BY LS 13518, SHINCKE. IN HIS SURVEY OF SECTION 7, RECORDED IN BOOK 2 OF SURVEYS AT PAGE 271, RECORDS OF SKAMANIA COUNTY, REBAR NOT ACCEPTED AS SKAMANIA COUNTY.
THE CALCULATED POSITION OF THE SOUTHEAST CORNER OF LOT 1, SECTION 7, FALLS IN A 15" FIR TREE. A DNR CARSONITE WITNESS POST WAS PLACED 6.2 FEET NORTH OF THE CORNER TREE.
CORNER MONUMENT NOT SET. USED SHINCKE'S REBAR AS A WITNESS CORNER - SEE NOTE "V".

AUDITOR'S CERTIFICATE

FILED FOR RECORD THIS _____ DAY OF _____ 19____
AT _____ M. IN BOOK _____ OF SURVEYS AT PAGE _____
AT THE REQUEST OF THE WASHINGTON STATE DEPARTMENT OF NATURAL RESOURCES.

AUDITOR'S FILE NUMBER _____

SKAMANIA CO. AUDITOR

SURVEYOR'S CERTIFICATE

THIS MAP CORRECTLY REPRESENTS A SURVEY MADE BY ME OR UNDER MY DIRECTION IN CONFORMANCE WITH THE REQUIREMENTS OF THE SURVEY RECORDING ACT OF 1973 AT THE REQUEST OF THE WASHINGTON STATE DEPARTMENT OF NATURAL RESOURCES
IN _____ 19____
H. Thomas Laird Jr., PLS

CERTIFICATE NUMBER

21490



SURVEYED BY:
H. THOMAS LAIRD JR. PLS
DRAWN BY:
B. ERIK NEDERGAARD
DATE:
DECEMBER 1991

SECTION 12, T.2 N., R.5 E. & SECTION 7, T.2 N., R.6 E., W.M.

A SURVEY IN

STATE OF WASHINGTON

DEPARTMENT OF NATURAL RESOURCES

F.M.# 801

CHECKED BY:
LAWRENCE J. HOLT, PLS
SHEET 4 OF 5.

Ⓥ WITNESS CORNER TO SE COR LOT 2 SEC 7

Ⓥ CALCULATED CORNER
ON 12-3-91, THIS SURVEY USED A 1/2" REBAR WITH PLASTIC CAP MARKED "LS 13518, SHIMCKE" AS A WITNESS CORNER TO THE SOUTHEAST CORNER OF LOT 2 OF SECTION 7. SAID REBAR IS N28E, 1.44 FEET FROM THE TRUE CORNER POSITION. SAID REBAR IS NOT ON ANY SUBDIVISIONAL LINES. THE FOLLOWING REFERENCES TO THE WITNESS CORNER WERE NOTED:
2 RP'S
10" FR AT N72E 5.86 FEET TO ALUM NAIL IN SOUTH SIDE.
15" FR (CORNER TREE) AT S80W 1.36 FEET TO ALUM NAIL IN SE SIDE.
FB 600.33C PAGE 6

Ⓦ CENTER 1/4 CORNER SECTION 7

Ⓦ CALCULATED CORNER
FD: 1/2" REBAR WITH PLASTIC CAP AT N21E 2.12 FEET, SET BY LS 13518, SHIMCKE, DURING HIS SURVEY OF SECTION 7, RECORDED IN BOOK 2 OF SURVEYS AT PAGE 271, RECORDED IN BOOK 2 OF COUNTY. REBAR NOT ACCEPTED AS CORNER.
ON 12-3-91, THIS SURVEY SET A DNR ALUMINUM MONUMENT WITH STAMPED ALUMINUM CAP AS THE CENTER 1/4 CORNER OF SECTION 7, AND NOTED THE FOLLOWING REFERENCES:
4 RP'S
DNR CARSONITE WITNESS POST AT NORTH, 3 FEET.
12 HEMLock AT N21E 30.51 FEET TO ALUM NAIL IN SOUTH SIDE.
18 HEMLock AT S2E 20.04 FEET TO ALUM NAIL IN NE SIDE.
9 HEMLock AT S4W 9.58 FEET TO ALUM NAIL IN SE SIDE.
FB 600.33C PAGE 16

ⓧ EAST 1/4 CORNER SECTION 7

ⓧ ACCEPTED CORNER
ON 9-25-91, THIS SURVEY FOUND THE DNR ALUMINUM MONUMENT THAT WAS SET IN 1988 TO BE FINALLY SET AND THE 1988 RP'S TO BE IN PLACE. (DNR FINAL MAP AND RECORDED BOOK 3 OF SURVEYS AT PAGE 2, RECORDED IN BOOK 2 OF SURVEYS OF SKAMANIA COUNTY)
THIS SURVEY NOTED DNR CARSONITE POST AT SOUTH, 0.8 FEET FROM THE MONUMENT.
FB 600.30 PAGE 55 (1988)

ⓧ SOUTHWEST 1/16 CORNER SECTION 12

ⓧ CALCULATED CORNER
ON 11-12-91, THIS SURVEY SET A DNR ALUMINUM MONUMENT WITH STAMPED ALUMINUM CAP AS THE SOUTHWEST 1/16 CORNER OF SECTION 12. THE FOLLOWING REFERENCES WERE NOTED:
4 RP'S
6" ALDER AT N58E 9.71 FEET TO ALUM NAIL IN SOUTH SIDE.
DNR CARSONITE WITNESS POST AT N72E 3.35 FEET.
8 HEMLock AT S1W 31.12 FEET TO ALUM NAIL IN EAST SIDE.
5" FR AT N58W 5.62 FEET TO ALUM NAIL IN NE SIDE.
FB 600.33B PAGE 61

ⓧ CENTER SOUTH 1/16 CORNER SECTION 12

ⓧ CALCULATED CORNER
ON 11-5-91, THIS SURVEY SET A DNR ALUMINUM MONUMENT WITH STAMPED ALUMINUM CAP AS THE CENTER SOUTH 1/16 CORNER OF SECTION 12. THE FOLLOWING REFERENCES WERE NOTED:
4 RP'S
DNR CARSONITE WITNESS POST AT NORTH, 3 FEET.
23" FR AT S68E 6.06 FEET TO ALUM NAIL IN NORTH SIDE.
22" FR AT S30W 25.22 FEET TO ALUM NAIL IN EAST SIDE.
9" FR AT N15W 5.84 FEET TO ALUM NAIL IN EAST SIDE.
FB 600.33B PAGE 55

ⓧ SOUTHEAST 1/16 CORNER SECTION 12

ⓧ CALCULATED CORNER
ON 11-6-91, THIS SURVEY SET A DNR ALUMINUM MONUMENT WITH STAMPED ALUMINUM CAP AS THE SOUTHEAST 1/16 CORNER OF SECTION 12. THE FOLLOWING REFERENCES WERE NOTED:
4 RP'S
DNR CARSONITE WITNESS POST AT NORTH, 3 FEET.
4 VINE MALE AT S84E 5.54 FEET TO ALUM NAIL IN SOUTH SIDE.
4 HEMLock AT S4W 6.80 FEET TO ALUM NAIL IN SE SIDE.
31" FR AT N3W 35.15 FEET TO ALUM NAIL IN EAST SIDE.
FB 600.33B PAGE 57

Ⓦ SOUTHEAST 1/16 CORNER SECTION 7

Ⓦ CALCULATED CORNER
FD: 1/2" REBAR WITH PLASTIC CAP AT N58E 1.49 FEET, BY LS 13518, SHIMCKE. DURING HIS SURVEY OF SECTION 7, RECORDED IN BOOK 2 OF SURVEYS AT PAGE 271, RECORDED IN SKAMANIA COUNTY. REBAR NOT ACCEPTED AS THE CORNER.
ON 12-3-91, THIS SURVEY SET A DNR ALUMINUM MONUMENT WITH STAMPED ALUMINUM CAP AS THE SOUTHEAST 1/16 CORNER OF SECTION 7. THE FOLLOWING REFERENCES WERE NOTED:
4 RP'S
22" HEMLock AT N11E 31.07 FEET TO ALUM NAIL IN SE SIDE.
24" FR STUMP AT S59E 15.20 FEET TO ALUM NAIL IN TOP CENTER.
DNR CARSONITE WITNESS POST AT SOUTH, 3 FEET.
11" HEMLock AT N57W 3.61 FEET TO ALUM NAIL IN SW SIDE.
FB 600.33C PAGE 14

Ⓦ SOUTH 1/16 ON EAST LINE SECTION 7

Ⓦ CALCULATED CORNER
FD: 1/2" REBAR WITH PLASTIC CAP AT N78E 2.02 FEET SET BY LS 13518, SHIMCKE. DURING HIS SURVEY OF SECTION 7, RECORDED IN BOOK 2 OF SURVEYS AT PAGE 271, REBAR NOT ACCEPTED AS CORNER.
ON 12-3-91, THIS SURVEY SET A DNR ALUMINUM MONUMENT WITH STAMPED ALUMINUM CAP AS THE SOUTH 1/16 ON THE EAST LINE OF SECTION 7. THE FOLLOWING REFERENCES WERE NOTED:
4 RP'S
DNR CARSONITE WITNESS POST AT NORTH, 3 FEET.
9" FR AT S2E 7.97 FEET TO ALUM NAIL IN NE SIDE.
9 HEMLock AT S21W 15.06 FEET TO ALUM NAIL IN WEST SIDE.
17 HEMLock AT N27W 9.32 FEET TO ALUM NAIL IN NE SIDE.
FB 600.33C PAGE 12

Ⓦ SOUTHWEST CORNER SECTION 11

Ⓦ ACCEPTED CORNER
FD: CAR SET INSIDE PIPE THAT WAS SET BY BILL BAETHY. BAETHY HAD SET HIS PIPE OLD DISTANCE AND BEARING FROM A 66" FR STUMP. 66" FR STUMP BT AT N64E 28.35 FEET TO NAIL IN FACE. ALSO FOUND A DNR CONCRETE MONUMENT AT N53W 49.1 FEET FROM THE OLSON PIPE. THIS MONUMENT WAS SET AT A POSITION THAT WAS DETERMINED BY OLSON ENGINEERING IN 1972 FROM GLO CALLS WEST, SOUTH, AND EAST. THIS POSITION WAS NOT ACCEPTED BY THIS SURVEY AND THE DNR MONUMENT WAS DESTROYED. THE OLSON ENGINEERING PIPE/CAP WAS ACCEPTED AS THE CORNER.
ON 6-14-91, THIS SURVEY FOUND THE PIPE/CAP TO BE FINALLY SET AND NOTED THE FOLLOWING REFERENCES:
4 RP'S
11" FR AT N64E 28.35 FEET TO ALUM NAIL IN SOUTH SIDE.
DNR CARSONITE WITNESS POST AT SOUTH, 2 FEET.
4" FR AT S24W 20.27 FEET TO ALUM NAIL IN WEST SIDE.
7" ALDER AT N38W 6.61 FEET TO ALUM NAIL IN SOUTH SIDE.
FB 600.33A PAGE 72

Ⓦ SOUTH 1/4 CORNER SECTION 11

Ⓦ CALCULATED CORNER
FD: IRON ROD AT N32E 82.20 FEET SET BY PARTIES UNKNOWN - NOT ACCEPTED.
1 3/4" IRON PIPE, PLUGGED AND TAPPED BY THIS SURVEY, AT N86W 23.03 FEET. THIS PIPE WAS SET BY OLSON ENGINEERING ON LINE BETWEEN CORNERS 1/2 MILE EAST AND WEST, THAT WERE NOT ACCEPTED BY THIS SURVEY. AT THE GLO DISTANCE WEST FROM THE RIDGE TOP, THIS PIPE WAS NOT ACCEPTED BY THIS SURVEY.
THIS SURVEY FOUND THE RIDGE TOP TO BE ROLLING OVER TOO MUCH TO MAKE AN ACCURATE DETERMINATION OF WHERE THE GLO SURVEYOR WOULD HAVE CALLED THE TOP.
ON 11-19-91, THIS SURVEY SET A DNR ALUMINUM MONUMENT WITH STAMPED ALUMINUM CAP AT A CALCULATED MIDPOINT POSITION AS THE SOUTH 1/4 CORNER OF SECTION 11 AND NOTED THE FOLLOWING REFERENCES:
4 RP'S
DNR CARSONITE WITNESS POST AT NORTH, 3 FEET.
3" HEMLock AT N82E 9.89 FEET TO ALUM NAIL IN SOUTH SIDE.
4" FR AT S8E 3.14 FEET TO ALUM NAIL IN WEST SIDE.
26" FR AT N58W 17.62 FEET TO ALUM NAIL IN SOUTH SIDE.
FB 600.33B PAGE 72

Ⓦ SOUTHWEST CORNER SECTION 12

Ⓦ CALCULATED CORNER
ON 11-19-91, THIS SURVEY SET A DNR ALUMINUM MONUMENT WITH STAMPED ALUMINUM CAP AT THE DOUBLE PROPORTIONED POSITION OF THE SOUTHWEST CORNER OF SECTION 12. THE CORNERS USED FOR THE DOUBLE PROPORTION ARE THE CORNERS 1 MILE WEST, SOUTH, AND EAST, AND 1/2 MILE NORTH. THE FOLLOWING REFERENCES WERE NOTED:
4 RP'S
DNR CARSONITE WITNESS POST AT NORTH, 3 FEET.
4" FR AT S4SE 12.29 FEET TO ALUM NAIL IN NE SIDE.
4" FR AT S9W 15.27 FEET TO ALUM NAIL IN WEST SIDE.
4" FR AT N37W 35.59 FEET TO ALUM NAIL IN NE SIDE.
FB 600.33B PAGE 70

Ⓦ SOUTH 1/4 CORNER SECTION 12

Ⓦ CALCULATED CORNER
ON 11-21-91, THIS SURVEY SET A DNR ALUMINUM MONUMENT WITH STAMPED ALUMINUM CAP AT THE CALCULATED MIDPOINT POSITION OF THE SOUTH 1/4 CORNER OF SECTION 12. THE CORNER IS IN THE MATEBE LINES ROAD AND WAS SET 6' BELOW THE ROAD SURFACE. THE FOLLOWING REFERENCES WERE NOTED:
4 RP'S
4" FR AT N4E 16.56 FEET TO ALUM NAIL IN EAST SIDE.
DNR CARSONITE WITNESS POST AT SOUTH, 11.5 FEET.
8 HEMLock AT S28W 30.27 FEET TO ALUM NAIL IN WEST SIDE.
5" FR AT N80W 29.30 FEET TO ALUM NAIL IN NORTH SIDE.
FB 600.33B PAGE 75

Ⓦ SOUTHEAST CORNER SECTION 12

Ⓦ ACCEPTED CORNER
FD: 1/2" REBAR WITH PLASTIC CAP AT N577397E, 0.60 FEET FROM THEORETICAL CALCULATED POSITION, SET BY J.B. SHIMCKE, PLS #13528 AT THE SINGLE PROPORTIONED POSITION AS SHOWN IN BOOK 2 OF SURVEYS AT PAGE 271, RECORDED OF SKAMANIA COUNTY.
ACCEPTED AS THE CORNER.
ON 12-1-91, THIS SURVEY FOUND THE REBAR TO BE FINALLY SET AND NOTED THE FOLLOWING REFERENCES:
4 RP'S
DNR CARSONITE WITNESS POST AT NORTH, 3 FEET.
44" FR STUMP AT S82E 13.20 FEET TO ALUM NAIL IN TOP.
14" HEMLock STUMP AT S5W 7.83 FEET TO ALUM NAIL IN TOP.
RR SPIKE IN NORTH END OF ROCK OUTCROP AT N33W 9.37 FEET.
FB 600.33C PAGE 17

Ⓦ SOUTH 1/4 CORNER SECTION 7

Ⓦ ACCEPTED CORNER
FD: 1/2" REBAR WITH PLASTIC CAP AT S.827818E, 0.42 FEET FROM THEORETICAL CALCULATED POSITION SET BY B.L. SHIMCKE, PLS #13518 AT THE SINGLE PROPORTIONED POSITION AS SHOWN IN BOOK 2 OF SURVEYS AT PAGE 271, RECORDED OF SKAMANIA COUNTY. ACCEPTED AS THE CORNER.
ON 12-3-91, THIS SURVEY FOUND THE REBAR TO BE FINALLY SET AND NOTED THE FOLLOWING REFERENCES:
4 RP'S
DNR CARSONITE WITNESS POST AT NORTH, 3 FEET.
25" HEMLock AT N52E 18.23 FEET TO ALUM NAIL IN NW SIDE.
19" HEMLock STUMP AT S28E 23.40 FEET TO ALUM NAIL IN TOP CENTER.
24" HEMLock STUMP AT N80W 17.98 FEET TO ALUM NAIL FACING CORNER.
FB 600.33C PAGE 7

Ⓦ EAST 1/16 CORNER SOUTH LINE SEC. 7

Ⓦ CALCULATED CORNER
FD: 1/2" REBAR WITH PLASTIC CAP AT S49E 0.75 FEET, SET BY LS 13518, SHIMCKE. DURING HIS SURVEY OF SECTION 7, NOT ACCEPTED.
ON 12-2-91, THIS SURVEY SET A DNR ALUMINUM MONUMENT WITH STAMPED ALUMINUM CAP AS THE EAST 1/16 CORNER ON THE SOUTH LINE OF SECTION 7 AND NOTED THE FOLLOWING REFERENCES:
4 RP'S
DNR CARSONITE WITNESS POST AT NORTH, 3 FEET.
42" FR STUMP AT S31W 30.28 FEET TO ALUM NAIL IN TOP CENTER.
25" FR AT N85W 22.78 FEET TO ALUM NAIL IN SOUTH SIDE.
23" HEMLock AT N14W 30.47 FEET TO ALUM NAIL IN SW SIDE.
FB 600.33C PAGE 10

Ⓦ SOUTHEAST CORNER SECTION 7

Ⓦ ACCEPTED CORNER
ON 9-25-91, THIS SURVEY FOUND THE CORNER TO BE AS DESCRIBED IN 1988 ON DNR FINAL MAP 660, RECORDED IN BOOK 3 OF SURVEYS AT PAGE 2, RECORDED IN SKAMANIA COUNTY. THE RP TREE SIZES WERE UPDATED IN THE FIELD BOOK.
FB 600.30 PAGE 58

Ⓦ WEST 1/4 CORNER SECTION 13

Ⓦ CALCULATED CORNER
FD: SKAMANIA COUNTY PIPE WITH BRASS CAP AT S5SE 77.54 FEET - NOT ACCEPTED. THIS SURVEY COULD FIND NO EVIDENCE THAT THIS IS A PERPETUATION OF THE ORIGINAL CORNER AND THE PIPE DOES NOT FIT THE GLO DISTANCES.
ON 11-21-91, THIS SURVEY SET A DNR ALUMINUM MONUMENT WITH STAMPED ALUMINUM CAP AT THE MIDPOINT POSITION AS THE WEST 1/4 CORNER OF SECTION 13 AND NOTED THE FOLLOWING REFERENCES:
3 RP'S
DNR CARSONITE WITNESS POST AT NORTH, 3 FEET.
26" FR STUMP AT N14E 13.67 FEET TO ALUM NAIL FACING CORNER.
28" FR STUMP AT N14E 13.67 FEET TO ALUM NAIL FACING CORNER.
FB 600.33B PAGE 77

Ⓦ EAST 1/4 CORNER SECTION 13

Ⓦ ACCEPTED CORNER
FD: SKAMANIA COUNTY PIPE WITH STAMPED BRASS CAP AS SHOWN ON SHIMCKE'S SURVEY OF SECTION 18, RECORDED IN BOOK 2 OF SURVEYS AT PAGE 271, RECORDED OF SKAMANIA COUNTY.
ON 11-20-91, THIS SURVEY FOUND THE PIPE TO BE FINALLY SET AND NOTED THE FOLLOWING REFERENCES:
4 RP'S
DNR CARSONITE WITNESS POST AT NORTH, 2.8 FEET.
DNR CARSONITE WITNESS POST AT EAST, 13.7 FEET AT WEST EDGE OF ROAD.
48" FR STUMP AT S38E 13.60 FEET TO ALUM NAIL FACING CORNER.
27" FR STUMP AT S19W 82.5 FEET TO NAIL FACING CORNER.
FB 600.33B PAGE 73

Ⓦ SOUTHWEST CORNER SECTION 13

Ⓦ ACCEPTED CORNER
ON 9-24-91, THIS SURVEY FOUND THE CORNER AND THE RP'S TO BE THE SAME AS SHOWN ON THE DNR SURVEY OF SECTION 24, RECORDED IN BOOK 2 OF SURVEYS AT PAGE 232, RECORDED OF SKAMANIA COUNTY.
FB 600.33B PAGE 43 (1991)
FB 600.26 PAGE 22 (1985)

Ⓦ SOUTHEAST CORNER SECTION 13

Ⓦ ACCEPTED CORNER
ON 9-24-91, THIS SURVEY FOUND THE CORNER AND THE RP'S TO BE THE SAME AS SHOWN ON THE DNR SURVEY OF SECTION 24, RECORDED IN BOOK 2 OF SURVEYS AT PAGE 232, RECORDED OF SKAMANIA COUNTY.
ON 12-4-91, THIS SURVEY NOTED THAT THE AREA HAD BEEN CLEARCUT AND THE RP'S WERE HIGH STUMPED.
FB 600.33B PAGE 44 (1991)
FB 600.261 PAGE 54 (1985)

A SURVEY IN

SECTION 12, T.2 N., R.5 E. & SECTION 7, T.2 N., R.6 E., W.M.

STATE OF WASHINGTON

DEPARTMENT OF NATURAL RESOURCES

SURVEYED BY:
H. THOMAS LARO JR., PLS
DRAWN BY:
B. ERIK WEDERGARD
DATE:
DECEMBER 1991



AUDITOR'S CERTIFICATE

FILED FOR RECORD THIS ____ DAY OF _____, 19____
AT _____ M. IN BOOK _____ OF SURVEYS AT PAGE _____
AT THE REQUEST OF THE WASHINGTON STATE DEPARTMENT OF NATURAL RESOURCES.

AUDITOR'S FILE NUMBER _____ SKAMANIA CO. AUDITOR _____

SURVEYOR'S CERTIFICATE

THIS MAP CORRECTLY REPRESENTS A SURVEY MADE BY ME OR UNDER MY DIRECTION IN CONFORMANCE WITH THE REQUIREMENTS OF THE SURVEY RECORING ACT OF 1973 AT THE REQUEST OF THE WASHINGTON STATE DEPARTMENT OF NATURAL RESOURCES
IN _____, 19____
H. Thomas Laro Jr.
H. THOMAS LARO JR., PLS
21490
CERTIFICATE NUMBER

CHECKED BY:
LAWRENCE J. HOLT, PLS
SHEET 5 OF 5.
F.M.# 801