

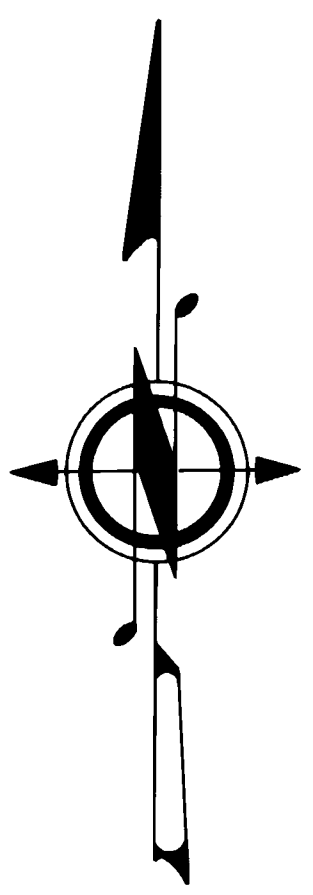
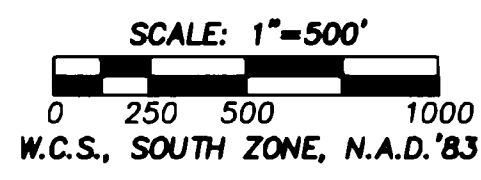
47  
page  
Surveys  
3  
Book

111051

BOOK 3 PAGE 47

DNR

*P. Laury*



METHOD OF SURVEY

THIS SURVEY WAS DONE BY FIELD TRAVERSE USING A KERN DKM2-AE 1 SECOND OPTICAL THEODOLITE AND A KERN DM-503 ELECTRONIC DISTANCE METER. TRAVERSES WERE RANDOM CLOSED LOOPS INTO CONTROL STATIONS AS MENTIONED IN BASIS OF MERIDIAN. CONTROL ON THIS PROJECT WAS DONE BY G.P.S. SURVEY USING 4 TRIMBLE 4000-ST GLOBAL POSITIONING SYSTEM RECEIVERS.

G.L.O. HISTORY

TOWNSHIP 3 NORTH, RANGE 9 EAST WAS SURVEYED AS FOLLOWS:  
THE WEST BOUNDARY, SUBDIVISIONS AND MEANDERS WAS SURVEYED BY EZRA L. SMITH AND SAMUEL J. SPRAY, CONTRACT NUMBER 216, DATED 26 AUGUST 1875.  
THE NORTH BOUNDARY TOWNSHIP LINE AND FURTHER SUBDIVISIONS WAS SURVEYED BY EDWIN RICHARDSON, CONTRACT NUMBER 247, DATED 7 DECEMBER 1878.  
FRACTIONAL NORTH AND WEST BOUNDARY TOWNSHIP LINES AND FURTHER SUBDIVISIONS WAS SURVEYED BY LEWIS D.W. SHELTON, UNDER SPECIAL INSTRUCTIONS DATED 17 MAY 1880.  
RETRACEMENT OF FRACTIONAL NORTH AND WEST BOUNDARIES, SUBDIVISIONS AND SUBDIVISIONAL CORRECTIONS WAS SURVEYED BY ALANZO AND FRANK X. GESNER, CONTRACT NUMBER 571, DATED 2 APRIL 1901.

BASIS OF MERIDIAN:

WASHINGTON COORDINATE SYSTEM, SOUTH ZONE, N.A.D.'83 (NORTH AZIMUTH) DERIVED FROM TIES TO THE FOLLOWING N.G.S. AND G.P.S. CONTROL STATIONS:  
N.G.S. 'LINDSEY', 'BROUGHT', 'RED 2' AND 'WYGANT'.  
G.P.S. #1-3N9E, #2-3N9E, #3-3N9E, #4-3N9E AND #5-3N9E.

TRUE NORTH: -0°49'42" AT THE CENTER 1/4 CORNER OF SECTION 23.

GRID FACTOR: 0.9999543

DESCRIPTION OF STATE OWNERSHIP:

NW 1/4 OF THE SW 1/4,

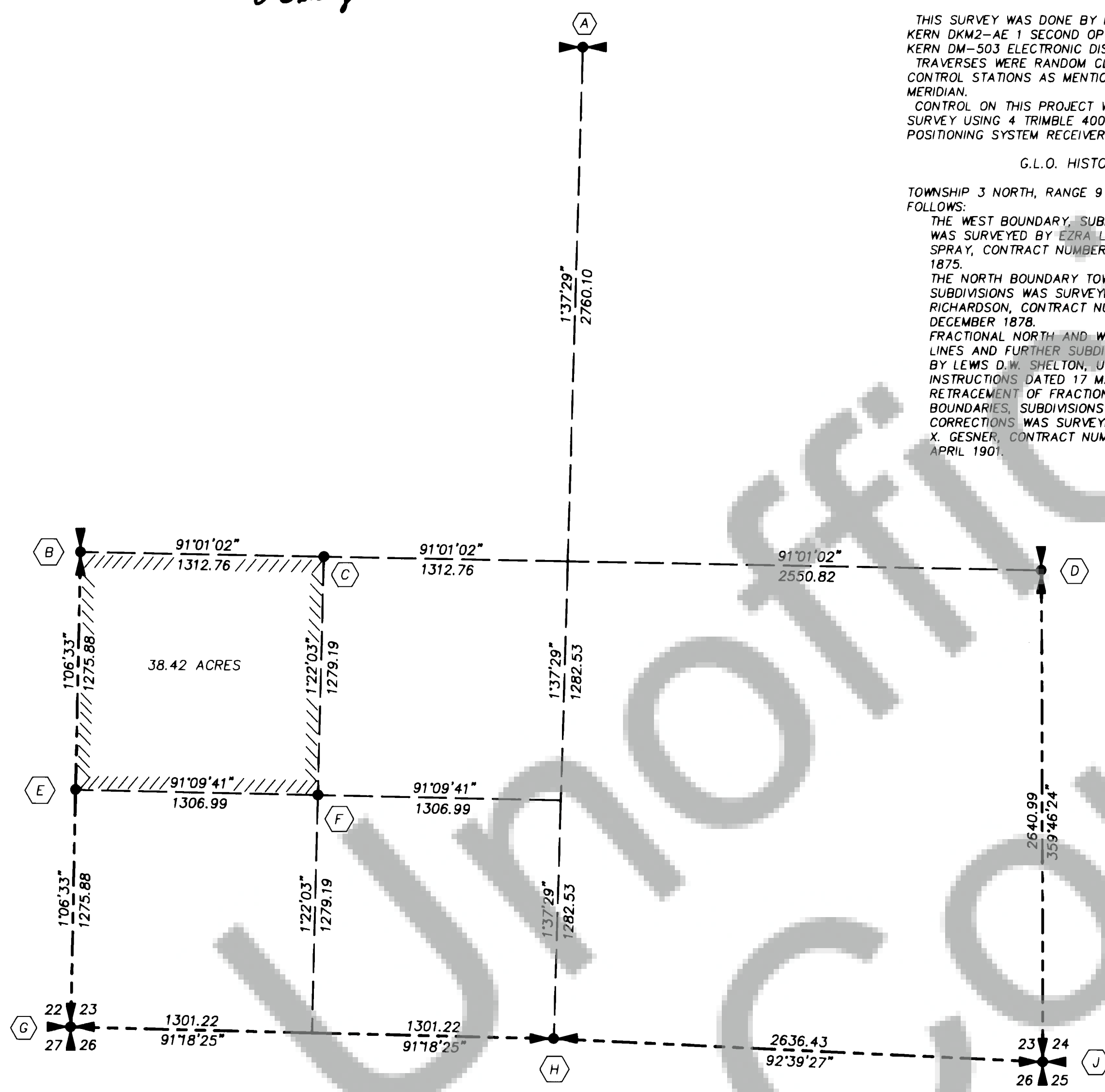
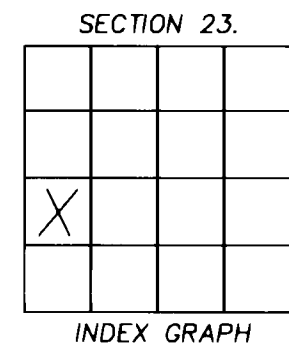
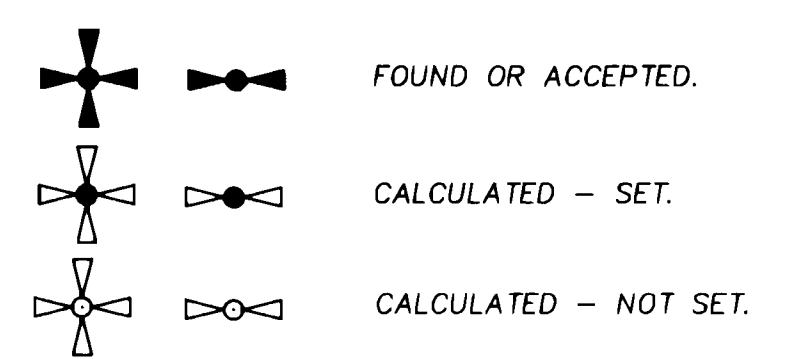
ALL IN SECTION 23, TOWNSHIP 3 NORTH, RANGE 9 EAST, WILLAMETTE MERIDIAN.

NOTE:  
////////// INDICATES THAT 1/2" REBAR WITH 1/2" PVC PIPE DIRECTLY OVER REBAR WERE SET AT RANDOM INTERVALS ALONG NOTED SUB-DIVISIONAL LINES TO MARK STATE PROPERTY AND ARE WITHIN +/- ONE FOOT OF THE ACTUAL SUB-DIVISIONAL LINE(S).

LEGEND

STANDARD DNR MONUMENTS ARE:  
2 3/8" O.D. ALUMINUM ALLOY PIPE WITH "BREAKAWAY" PLASTIC BASE.  
3 1/4" DIAMETER ALUMINUM ALLOY CAP STAMPED WITH PROPER CORNER IDENTIFICATION, PERMANENT, VERTICALLY ORIENTED MAGNETS ARE INCLUDED IN THE MONUMENT BASE AND CAP.  
STANDARD DNR CAPS ARE:  
3 1/4" DIAMETER ALUMINUM ALLOY DISKS WITH A VERTICALLY ORIENTED MAGNETS AND STAMPED WITH PROPER CORNER IDENTIFICATION, SET AS NOTED.  
DNR CONCRETE MONUMENTS ARE 3" DIAMETER WITH BRASS CAP STAMPED WITH PROPER CORNER IDENTIFICATION.  
DNR IRON PIPES ARE 1" DIAMETER WITH BRASS CAP STAMPED WITH PROPER CORNER IDENTIFICATION.

G.L.O. CORNER SYMBOLS:

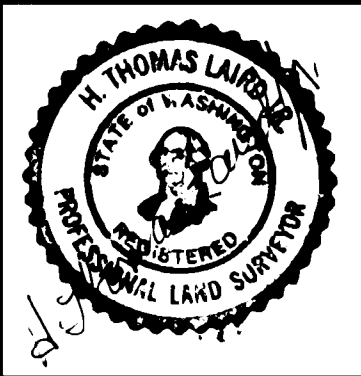


"HEFTY" G.P.S. SURVEY PROJECT

SEE SHEET 2 OF 2 FOR CORNER NOTES.

AUDITOR'S CERTIFICATE  
FILED FOR RECORD THIS 2nd DAY OF April, 1991  
AT 3:11 P.M. IN BOOK 3 OF SURVEYS AT PAGE 47-8  
AT THE REQUEST OF THE WASHINGTON STATE DEPARTMENT OF NATURAL RESOURCES.  
111051  
AUDITOR'S FILE NUMBER  
*P. Laury* - Deputy  
SKAMANIA COUNTY AUDITOR

SURVEYOR'S CERTIFICATE  
THIS MAP CORRECTLY REPRESENTS A SURVEY MADE BY ME OR UNDER MY DIRECTION IN CONFORMANCE WITH THE REQUIREMENTS OF THE SURVEY RECORDING ACT OF 1973 AT THE REQUEST OF THE WASHINGTON STATE DEPARTMENT OF NATURAL RESOURCES  
IN MARCH, 1991.  
*H. Thomas Laird Jr.*  
H. THOMAS LAIRD JR., PLS  
21490  
CERTIFICATE NUMBER



A SURVEY IN  
SECTION 23, TOWNSHIP 3 NORTH, RANGE 9 EAST, W.M.  
SURVEYED BY: H. THOMAS LAIRD JR., PLS  
DRAWN BY: B. ERIK NEDERGARD  
DATE: FEBRUARY 1991  
STATE OF WASHINGTON  
DEPARTMENT OF NATURAL RESOURCES  
CHECKED BY: LAWRENCE J. HOLT, PLS  
SHEET 1 OF 2  
F.M.# 757

DNR

O. Jany

① NORTH 1/4 CORNER SECTION 23.

ACCEPTED CORNER.  
FD-A 1" IRON PIPE WITH STAMPED END CAP, DATE AND BY WHOM SET IS UNKNOWN, HOWEVER AN IRON PIPE WAS NOTED AS BEING IN PLACE DURING A 1915 RIGHT OF WAY MAP FOR STATE HIGHWAY NO. 8.  
A STEEL POST WAS FOUND 3 FEET SOUTH IRON PIPE IS SHOWN ON THE FOLLOWING RECORDED INSTRUMENTS:  
BOOK 2 OF SURVEYS, PAGE 121, RECORDS OF SKAMANIA COUNTY WA.  
SKAMANIA COUNTY PLATS, PAGE 50, RECORDS OF SKAMANIA COUNTY WA.  
ON 11-7-90, THIS SURVEY REPLACED FOUND 1X 30" IRON PIPE WITH DNR ALUMINUM MONUMENT WITH STAMPED ALUMINUM CAP 6" ABOVE GROUND AND NOTED THE FOLLOWING REFERENCES:  
6 RPS:  
DNR CARSONITE WITNESS POST AT NORTH, 3 FEET.  
12" FIR AT N 22 E., 10.81 FEET TO ALUM. NAIL IN EAST SIDE.  
22" FIR AT N 86 E., 17.90 FEET TO ALUM. NAIL IN SOUTH SIDE.  
25" FIR AT S 20 E., 20.62 FEET TO ALUM. NAIL IN WEST SIDE.  
36" FIR AT SOUTH, 13.20 FEET TO ALUM. NAIL IN WEST SIDE.  
8" FIR AT S 84 W., 20.28 FEET TO NAIL IN NORTH SIDE.  
F.B. 600.31A P. 14

② WEST 1/4 CORNER SECTION 23.

ACCEPTED CORNER.  
FD-A 3" CYLINDRICAL DEPARTMENT OF NATURAL RESOURCES CONCRETE MONUMENT WITH STAMPED BRASS CAP 4" ABOVE GROUND SET IN 1977 BY DNR EMPLOYEE ARTHUR D. MCGOY, PLUS #16219 FROM A FOUND 32" FIR BEARING TREE SNAG WITH VISIBLE SCRIBE AS NOTED ON LAND CORNER RECORD NO. 17 FILED IN BOOK 3/9 OF MONUMENTS, PAGE 2, RECORDS OF SKAMANIA COUNTY, WASHINGTON.  
A 32" FIR BEARING TREE SNAG WITH OLD FACE AND AXE MARKS BUT NO VISIBLE SCRIBE SHOWING TODAY AT N 51 E., 14.9 FEET TO FACE.  
IN 1948, A RIGHT OF WAY PLAT FOR HOGAN AND GRASSETT BY CHARLES E. TULLOCK NOTES "POST, 1 BT @ COR."  
ON 10-3-90, THIS SURVEY FOUND DNR CONCRETE MONUMENT FIRMLY IN PLACE, HELD IT FOR CORNER AND NOTED THE FOLLOWING REFERENCES:  
4 RPS:  
DNR CARSONITE WITNESS POST AT NORTH, 3 FEET.  
13" FIR AT N 12 E., 19.97 FEET TO ALUM. NAIL IN WEST SIDE.  
10" FIR AT S 70 E., 6.15 FEET TO ALUM. NAIL IN SOUTH SIDE.  
8" FIR AT N 78 W., 10.54 FEET TO ALUM. NAIL IN SOUTH SIDE.  
F.B. 600.31 P. 72

③ CENTER-WEST 1/16 CORNER SECTION 23.

CALCULATED CORNER.  
ON 11-6-90, THIS SURVEY SET A DNR ALUMINUM MONUMENT WITH STAMPED ALUMINUM CAP 6" ABOVE GROUND AT CALCULATED POSITION AS THE CENTER-WEST 1/16 CORNER OF SECTION 23 AND NOTED THE FOLLOWING REFERENCES:  
5 RPS:  
DNR CARSONITE WITNESS POST AT NORTH, 3 FEET.  
11" FIR AT N 45 E., 7.33 FEET TO ALUM. NAIL IN NORTHWEST SIDE.  
23" FIR AT S 86 E., 22.26 FEET TO ALUM. NAIL IN NORTH SIDE.  
9" WILLOW AT S 8 W., 6.50 FEET TO ALUM. NAIL IN WEST SIDE.  
6" FIR AT S 70 W., 12.99 FEET TO ALUM. NAIL IN SOUTH SIDE.  
F.B. 600.31A P. 11

④ EAST 1/4 CORNER SECTION 23.

ACCEPTED CORNER.  
FD-A 1" GALVANIZED IRON PIPE WITH STAMPED END CAP SET LOOSELY IN A STONE MOUND, DATE AND BY WHOM SET IS UNKNOWN.  
CORNER IS SHOWN ON OLD MAPS OF THE BROUGHTON LUMBER COMPANY FLUME, DATING INTO THE 1920'S.  
ON 11-8-90, THIS SURVEY REPLACED FOUND 1X 30" GALVANIZED IRON PIPE WITH A DNR ALUMINUM MONUMENT WITH STAMPED ALUMINUM CAP 1" ABOVE GROUND, CEMENTED IN STONE MOUND AND NOTED THE FOLLOWING REFERENCES:  
5 RPS:  
DNR CARSONITE WITNESS POST AT NORTH, 3 FEET.  
22" FIR AT N 40 E., 26.90 FEET TO ALUM. NAIL IN SOUTHEAST SIDE.  
18" FIR AT S 34 E., 18.69 FEET TO ALUM. NAIL IN NORTHWEST SIDE.  
19" FIR AT S 28 W., 26.54 FEET TO ALUM. NAIL IN SOUTHEAST SIDE.  
21" FIR AT N 50 W., 9.64 FEET TO ALUM. NAIL IN SOUTHWEST SIDE.  
F.B. 600.31A P. 16

⑤ SOUTH 1/16 CORNER WEST LINE SECTION 23.

CALCULATED CORNER.  
ON 11-7-90, THIS SURVEY SET A DNR ALUMINUM MONUMENT AT CALCULATED POSITION APPROXIMATELY 75 FEET SOUTH OF OLD ROAD AS THE SOUTH 1/16 CORNER BETWEEN SECTIONS 22 AND 23. THE FOLLOWING REFERENCES WERE ALSO NOTED:  
5 RPS:  
5" FIR AT N 72 E., 13.40 FEET TO ALUM. NAIL IN NORTH SIDE.  
28" FIR AT S 68 E., 23.51 FEET TO ALUM. NAIL IN NORTHEAST SIDE.  
7" FIR AT N 82 W., 2.99 FEET TO ALUM. NAIL IN NORTH SIDE.  
7" FIR AT N 24 W., 4.82 FEET TO ALUM. NAIL IN EAST SIDE.  
DNR CARSONITE WITNESS POST AT N 10 W., 2.6 FEET.  
F.B. 600.31A P. 13

⑥ SOUTHWEST 1/16 CORNER SECTION 23.

CALCULATED CORNER.  
ON 11-8-90, THIS SURVEY SET A DNR ALUMINUM MONUMENT WITH STAMPED ALUMINUM CAP 5" ABOVE GROUND AT CALCULATED POSITION AS THE SOUTHWEST 1/16 CORNER OF SECTION 23 AND NOTED THE FOLLOWING REFERENCES:  
4 RPS:  
DNR CARSONITE WITNESS POST AT NORTH, 3 FEET.  
27" FIR AT N 45 E., 11.95 FEET TO ALUM. NAIL IN NORTHWEST SIDE.  
24" FIR AT N 77 E., 27.03 FEET TO ALUM. NAIL IN NORTH SIDE.  
31" FIR AT S 43 W., 41.93 FEET TO ALUM. NAIL IN NORTHWEST SIDE.  
F.B. 600.31A P. 9

⑦ SOUTHWEST CORNER SECTION 23.

ACCEPTED CORNER.  
FD-A 3 1/4" CORPS OF ENGINEERS STAMPED BRASS CAP CEMENTED INTO A ROCK LEDGE, DATE SET IS UNKNOWN.  
13" OAK BEARING TREE AT S 72 W., 44.9 FEET.  
10" OAK BEARING TREE WITH OVERGROWTH AT S 66 E., 22.5 FEET.  
13" OAK BEARING TREE AT WEST, 43.78 FEET.  
12" OAK AT N 70 W., 42.09 FEET.  
ON 10-9-90, THIS SURVEY FOUND CORPS OF ENGINEERS BRASS CAP FIRMLY IN PLACE, HELD IT FOR CORNER AND NOTED THE FOLLOWING REFERENCES:  
5 RPS:  
8" OAK AT N 75 E., 25.46 FEET TO ALUM. NAIL IN SOUTH SIDE.  
9" OAK AT S 70 E., 22.65 FEET TO ALUM. NAIL IN NORTH SIDE.  
13" OAK (B.T.) AT WEST, 43.78 FEET TO ALUM. NAIL IN NORTH SIDE.  
12" OAK (B.T.) AT N 70 W., 42.09 FEET TO ALUM. NAIL IN NORTH SIDE.  
DNR CARSONITE WITNESS POST AT N 80 W., 6.5 FEET.  
F.B. 600.31 P. 70

⑧ SOUTH 1/4 CORNER SECTION 23.

ACCEPTED CORNER.  
FD-A STAMPED U.S. FISH AND WILDLIFE BRASS CAP SET INTO A ROCK OUTCROP SET IN 1947 FROM LONG GLO EVIDENCE.  
IN 1978, LONG GLO EVIDENCE, FEB 8, 1989 OF OLSON ENGINEERING FOUND U.S. FISH AND WILDLIFE STAMPED BRASS CAP. REMAINS OF NORTHEAST BEARING TREE AND ONE REFERENCE POINT WAS NOTED ON LAND CORNER RECORD R-19 FILED IN BOOK 3/9 OF MONUMENTS, PAGE 1, RECORDS OF SKAMANIA COUNTY, WASHINGTON.  
ON 9-24-90, THIS SURVEY FOUND STAMPED U.S. FISH AND WILDLIFE BRASS CAP FIRMLY IN PLACE, HELD IT FOR CORNER AND NOTED THE FOLLOWING REFERENCES:  
4 RPS:  
10" MAPLE AT N 16 E., 33.10 FEET TO ALUM. NAIL IN WEST.  
4" FIR AT S 73 E., 31.48 FEET TO ALUM. NAIL IN NORTH SIDE.  
18" FIR AT S 80 W., 24.65 FEET TO ALUM. NAIL IN SOUTH SIDE.  
F.B. 600.31 P. 74

⑨ SOUTHEAST CORNER SECTION 23.

ACCEPTED CORNER.  
FD-A 3" CYLINDRICAL U.S. FISH AND WILDLIFE CONCRETE MONUMENT WITH STAMPED BRASS CAP 4" ABOVE STONE MOUND SET IN 1947 FROM FOUND GLO. EVIDENCE.  
A 50" LIVE FIR BEARING TREE AT N 28 E., 28 FEET +/- TO CENTER.  
ON 11-7-90, THIS SURVEY FOUND U.S. FISH AND WILDLIFE CONCRETE MONUMENT FIRMLY IN PLACE, HELD IT FOR CORNER AND NOTED THE FOLLOWING REFERENCES:  
3 RPS:  
9" FIR AT N 88 E., 22.96 FEET TO ALUM. NAIL IN NORTH SIDE.  
38" PINE AT S 4 W., 16.45 FEET TO ALUM. NAIL IN WEST SIDE.  
13" FIR AT N 83 W., 28.81 FEET TO ALUM. NAIL IN NORTH SIDE.  
F.B. 600.31A P. 15

AUDITOR'S CERTIFICATE

FILED FOR RECORD THIS 2nd DAY OF April 1991 AT 2:11 P.M. IN BOOK 3 OF SURVEYS AT PAGE 47-8 AT THE REQUEST OF THE WASHINGTON STATE DEPARTMENT OF NATURAL RESOURCES.

111051  
AUDITOR'S FILE NUMBER

O. Jany - Deputy  
SKAMANIA COUNTY AUDITOR

SURVEYOR'S CERTIFICATE

THIS MAP CORRECTLY REPRESENTS A SURVEY MADE BY ME OR UNDER MY DIRECTION IN CONFORMANCE WITH THE REQUIREMENTS OF THE SURVEY RECORDING ACT OF 1973 AT THE REQUEST OF THE WASHINGTON STATE DEPARTMENT OF NATURAL RESOURCES IN March 1991.

H. Thomas Land Jr., PLS  
H. THOMAS LAND JR., PLS

21490  
CERTIFICATE NUMBER



A SURVEY IN

SECTION 23, TOWNSHIP 3 NORTH, RANGE 9 EAST, W.M.

SURVEYED BY: H. THOMAS LAND JR., PLS  
DRAWN BY: B. ERIK NEDERGARD  
DATE: FEBRUARY 1991  
STATE OF WASHINGTON  
DEPARTMENT OF NATURAL RESOURCES  
CHECKED BY: LAWRENCE A. HOLT, PLS  
SHEET 2 OF 2  
F.M.# 757