

Hagedorn Inc.

P. Lowry

BEARINGS ARE TRUE MERIDIAN
(BASED ON SOLAR OBSERVATIONS
AT POINT 2834'N. AND 353'E. OF
S.E. CORNER OF SECTION 31)
MEAN DECLINATION IS 20'E.

0 400 800 1600
SCALE 1"=800'

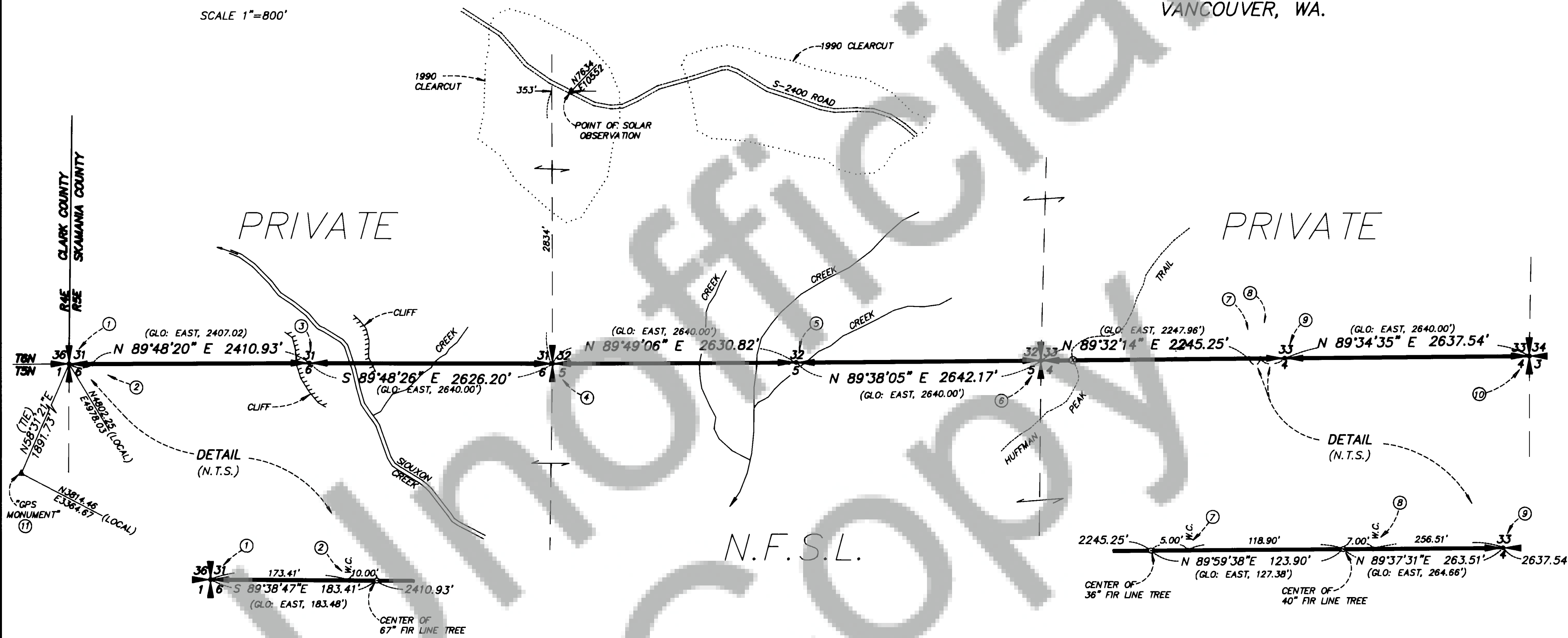
LEGEND

- MONUMENT FOUND OR SET AS NOTED
 - ① CORNER INFORMATION CODE NUMBER (TYPICAL) SEE SHEET 2 OF 2
 - () RECORD GLO BEARING AND DISTANCE
 - ⊗ "CARSONITE POST" SET WITH STICKER NOTING DISTANCE TO NEAREST CORNER
- NOTE:
SOUTH LINE OF SECTIONS 31, 32 & 33 POSTED
WITH 6 FT. "CARSONITE POSTS WITH "54-9 DECAL"
(150 FT. MAXIMUM INTERVAL)
- N.F.S.L. NATIONAL FOREST SYSTEM LANDS

"SIOUXON CADASTRAL SURVEY"

IN
SECTIONS 31, 32, 33, T6N, R5E, W.M.
SKAMANIA COUNTY, WASHINGTON

CONTRACT No. 53-05K3-0-06192ra
FOR
GIFFORD PINCHOT NATIONAL FOREST
P.O. BOX 8944
VANCOUVER, WA.



SURVEYED & MONUMENTED IN OCTOBER-DECEMBER 1990

C.E. WHITTEN, LS 12412

I CERTIFY THAT THIS SURVEY WAS PERFORMED AT THE REQUEST
OF THE GIFFORD PINCHOT NATIONAL FOREST SUPERVISOR

JOHN RICHMOND, C.O.R.

EXAMINED & ACCEPTED FOR THE UNITED STATES FOREST SERVICE
THIS 25th DAY OF January, 1991.

JOHN RICHMOND, C.O.R.

SURVEYOR'S CERTIFICATE

This map correctly represents a survey made by me or under my direction
in conformance with the requirements of the Survey Recording Act at the
request of U.S.D.A. FOREST SERVICE
in OCT-DEC, 1990

(Signed & Sealed)

Certificate No. 9579

AUDITOR'S CERTIFICATE

Filed for record this 5th day of Feb, 1991 at 10:45 M. in Book 3
of surveys at Page 44 at the request of Hagedorn, Inc.

(Signed)

P. Lowry (Deputy County Auditor)

NOTE: Hagedorn, Inc. makes no warranties as to matters of unwritten
title such as acquiescence, estoppel, adverse possession, etc.

SCALE 1"=800'
DATE 1/3/91
JOB NO. 90-202
CALC. BY CEW
DRAWN BY CC
CHECKED BY
SHEET 1 OF 2

HAGEDORN, INC.
1924 Broadway Vancouver, Wa.
98663
Ph: (206) 696-4428 (503) 283-6778

NARRATIVE:

THE PURPOSE OF THIS SURVEY IS TO ESTABLISH AND MARK THE BOUNDARY BETWEEN NATIONAL FOREST SYSTEM LANDS AND PRIVATE OWNERSHIP (IN THIS CASE, THE STATE OF WASHINGTON) ALONG THE SOUTH LINE OF SECTIONS 31, 32, 33, TOWNSHIP 6 NORTH, RANGE 5 EAST, WILLAMETTE MERIDIAN, SKAMANIA COUNTY, WASHINGTON (TOWNSHIP 5 NORTH, RANGE 5 EAST IS UNSURVEYED). THE CORNER BETWEEN TOWNSHIPS 5 AND 6 NORTH AND RANGES 4 EAST AND 5 EAST WAS ESTABLISHED BY JACOB RICHARDSON, U.S. DEPUTY SURVEYOR, UNDER CONTRACT No. 383 IN 1893. THE SOUTH BOUNDARY OF TOWNSHIP 6 NORTH, RANGE 5 EAST WAS ESTABLISHED BY C. FRANK RHODES, U.S. DEPUTY SURVEYOR, UNDER CONTRACT No. 674 IN 1909. SUBSEQUENT REMONUMENTATION OF SEVERAL CORNER POINTS WAS DONE BY JAMES JELLEY, BLM CADASTRAL SURVEYOR, IN 1966. ADDITIONAL RECOVERY AND REMONUMENTATION WAS DONE BY THE STATE OF WASHINGTON, DEPARTMENT OF NATURAL RESOURCES IN 1980 AND 1986. THE THREE LINE TREES CALLED FOR BY "RHODES" IN 1909 WERE RECOVERED AND MONUMENTED (AS WITNESS CORNERS) IN THIS PRESENT SURVEY. THE ORIGINAL STONE AT THE SOUTHEAST CORNER OF SECTION 31 WAS REPLACED WITH A MONUMENT AS WELL. THE REMAINING SIX CORNERS WERE "MAINTAINED" AND BROUGHT UP TO U.S. FOREST SERVICE CONTRACT SPECIFICATIONS. THE ABOVE TEN CORNERS WERE THEN TIED TOGETHER BY A SERIES OF FIVE CLOSED TRAVERSE CIRCUITS ORIENTED TO TRUE MERIDIAN BY SIX SOLAR OBSERVATIONS TAKEN AT A POINT 2834 FEET NORTH AND 353 FEET EAST OF THE SOUTHEAST CORNER OF SECTION 31. FIELD EQUIPMENT USED CONSISTED OF ONE-MINUTE THEODOLITES ("WLD T-16") AND EDMS ("WLD DIAL"). SEVERAL ANGLES ON LONG CONTROL COURSES (4,000 FEET TO 18,000 FEET) WERE OBSERVED WITH A ONE-SECOND THEODOLITE ("WLD T-2").

NOTE: NEW BEARING TREES NOTED BELOW ARE SCRIBED WITH APPROPRIATE CORNER DATA, PAINTED WITH AN ORANGE BAND AT "DBH", HAVE 54-3 AND 54-9 SIGNS ATTACHED, AND HAVE A BRASS WASHER (STAMPED "LS12412") NAILED IN THE LOWER PORTION OF THE NEWLY SCRIBED "B".

ALL BEARINGS SHOWN TO NEW AND EXISTING BTs ARE BY STAFF COMPASS USING A DECLINATION OF 22° EAST. DISTANCES ARE TO THE CENTER OF THE TREE AT A POINT 1 FOOT ABOVE THE GROUND.

PHOTOGRAPHIC EVIDENCE OF THESE CORNERS IS ON FILE WITH THE U.S.F.S. AND HAGEDORN, INC.

CORNER INFORMATION No. (TYP.)

① T6N
S31 S32
R4E S1 S6 R5E
TSN
1980

STAMPING ON CAP (TYP.)

FOUND A 1" IRON PIPE WITH 3" DNR BRASS CAP SET TO REPLACE ORIGINAL NOTCHED STONE. (I BURIED THE "STONE" ON EAST SIDE OF MONUMENT AS A MEMORIAL)

B.T.s FOUND:
36" HEMLOCK STUB~N32 1/2°W~15.8' (1893 BT, NO MARKS)
36" FIR SNAG~N60 1/2°E~69.3' (1909 BT, NO MARKS)
40" FIR SNAG~S30°W~66.7' (1909 BT, NO MARKS)
11" HEMLOCK~N25 1/2°W~21.3' (1980 BT SCRIBED "T6N R4E S36 BT")

NEW B.T.s:
18" HEMLOCK~N33 1/4°E~53.6' (SCRIBED "T6N R5E S31 BT")
14" HEMLOCK~S20°E~39.9' (SCRIBED "TSN R5E S6 BT")
SET CARSONITE WITNESS POST 3' NORTH OF MONUMENT

② 1990
T6N
R5E S31 S32
S6 W.C.
TSN
LS12412

FOUND A 67" FIR SNAG (NO MARKS REMAINING) AT POSITION OF LINE TREE CALLED AT 2.78 CHAINS EAST OF TOWNSHIP CORNER. SET A 2 1/4" ALUMINUM PIPE WITH A 3 1/4" USFS ALUMINUM CAP AS A WITNESS CORNER 10.0 FT. WEST OF THE CENTER OF THE LINE TREE (ON LINE WITH THE TOWNSHIP CORNER)

B.T.s:
9" HEMLOCK~N4 3/4°E~33.9' (SCRIBED "WCBT")
12" HEMLOCK~S20 3/4°W~31.3' (SCRIBED "WCBT")
15" HEMLOCK~N54 1/2°W~16.3' (SCRIBED "WCBT")
SET CARSONITE WITNESS POST 2 FT. EAST OF WITNESS CORNER.

③ T6N
1/4 S31 S32
S6 TSN
R5E 1986

FOUND A 2 1/2" IRON PIPE WITH BLM BRASS CAP SET TO REPLACE THE ORIGINAL SCRIBED STONE WHICH IS NOW INVERTED AND PLACED ON NORTH SIDE OF IRON PIPE.

B.T.s:
50" FIR UPROOT~N29°E~29' (1909 BT, NO MARKS)
60" FIR SNAG~S50°E~46.2' (1909 BT W/SCRIBED SLAB)
17" FIR~N41 1/2°W~11.2' (1966 BT WITH HEALED SCAR)
ROCK OUTCROP~S40 1/2°W~11.3' (1966 BO MARKED "X80")

NEW B.T.s:
10" HEMLOCK~S8 3/4°E~12.2' (SCRIBED "1/4 S6 BT")
FOUND STEEL FENCE POST 5 FT. SOUTH OF IRON PIPE;
SET STEEL FENCE POST 3.5 FT. S80°E OF IRON PIPE;
SET CARSONITE WITNESS POST 2 FT. NORTH OF IRON PIPE.

④ T6N
S31 S32
1990 S6 R5E
TSN
LS12412

FOUND ORIGINAL NOTCHED STONE FIRMLY SET AND REPLACED IT WITH A 2 1/2" ALUMINUM PIPE WITH 3 1/4" USFS ALUMINUM CAP. (I BURIED THE "STONE" ON THE NORTH SIDE OF THE MONUMENT AS A MEMORIAL).

B.T.s FOUND:
ROTTED HEMLOCK MOUND~N53°E~33' (1909 BT, NO MARKS)
20" HEMLOCK STUB~S53°E~34.3' (1909 BT, NO MARKS)
40" FIR SNAG~S17°W~62.5' (1909 BT, NO MARKS)
40" FIR SNAG~N28°W~36.3' (1909 BT, NO MARKS)

NEW B.T.s:
9" HEMLOCK~N67 1/2°E~13.7' (SCRIBED "T6N R5E S32 BT")
14" HEMLOCK~S18 1/4°E~20.6' (SCRIBED "TSN R5E S5 BT")
18" FIR~S84 1/2°W~27.4' (SCRIBED "TSN R5E S6 BT")
RESET A DNR CARSONITE WITNESS POST 4.0 FT. NORTH
(SEE LCR BOOK 6-5, PAGE 21,22)

⑤ T6N
1/4 S31 S32
TSN R5E
1986

FOUND 2 1/2" IRON PIPE WITH BLM BRASS CAP SET TO REPLACE THE ORIGINAL SCRIBED STONE. (I BURIED THE "STONE" ON THE NORTH SIDE OF THE MONUMENT AS A MEMORIAL).

B.T.s FOUND:
CEDAR UPROOT~S44°W~43' (1909 BT, NO MARKS)
27" FIR STUMP~N26°W~18.9' (1966 BT WITH HEALED SCAR)
20" FIR STUMP~S37°E~15.1' (1966 BT WITH HEALED SCAR)

NEW B.T.s:
23" FIR~S19 1/4°E~67.1' (SCRIBED "1/4 S 5 BT")
17" FIR~S27 1/4°W~46.0' (SCRIBED "1/4 S 5 BT")
19" HEMLOCK~N66 3/4°W~52.9' (SCRIBED "1/4 S 32 BT")
FOUND DNR WITNESS POST 5 FT. N30°W
(SEE LCR BOOK 6-5, PAGE 23,24)

⑥ T6N
R5E
S31 S32
S5 S4
TSN
1986

FOUND A 2 1/4" ALUMINUM PIPE WITH DNR CAP AND ORIGINAL STONE BURIED ON THE SOUTH SIDE.

B.T.s FOUND:
ROTTED MOUND~N79°E~25' (1909 BT)
50" FIR SNAG~S12°E~51.0' (1909 BT, NO MARKS)
40" FIR STUMP~S37°W~7.0' (1909 BT, NO MARKS)
49" FIR STUMP~N4°W~20.0' (1909 BT, NO MARKS)

NEW B.T.s:
13" HEMLOCK~N52 1/4°E~17.7' (SCRIBED "T6N R5E S33 BT")
17" HEMLOCK~S36 3/4°E~33.4' (SCRIBED "TSN R5E S4 BT")
6" HEMLOCK~N74 1/2°W~26.6' (SCRIBED "T6N R5E S32 BT")
FOUND DNR WITNESS POST 1.5 FT. NORTH
(SEE LCR BOOK 6-5, PAGE 25,26)

⑦ 1990
T6N
W.C. S31 S32
S4 R5E
TSN
LS12412

FOUND A 36" FIR SNAG (NO MARKS REMAINING) AT POSITION OF LINE TREE CALLED AT 5.94 CHAINS WEST OF N 1/4 SEC. 4. SET A 2 1/4" ALUMINUM PIPE WITH A 3 1/4" U.S.F.S. CAP AS A WITNESS CORNER 5.0 FT. EAST OF CENTER OF THE LINE TREE (ON LINE WITH LINE TREE 124 FT. EAST).

NEW B.T.s:
8" HEMLOCK~N51 1/4°E~16.5' (SCRIBED "WCBT")
10" HEMLOCK~S38 1/2°E~25.5' (SCRIBED "WCBT")
13" HEMLOCK~N19 1/2°W~9.2' (SCRIBED "WCBT")
SET CARSONITE WITNESS POST 3' SOUTH.

⑧ 1990
T6N
W.C. S31 S32
S4 R5E
TSN
LS12412

FOUND A 40" ROTTED STUB (NO MARKS REMAINING) AT POSITION OF LINE TREE CALLED 4.01 CHAINS WEST OF N 1/4 SEC. 4. SET A 2 1/4" ALUMINUM PIPE WITH A 3 1/4" U.S.F.S. CAP AS A WITNESS CORNER 7.0 FT. EAST OF THE CENTER OF THE LINE TREE (ON LINE WITH 1/4 COR. 264' EAST)

NEW B.T.s:
9" HEMLOCK~N72°E~10.6' (SCRIBED "WCBT")
15" HEMLOCK~S30 1/2°E~20.0' (SCRIBED "WCBT")
10" HEMLOCK~N18°W~14.6' (SCRIBED "WCBT")
SET CARSONITE WITNESS POST 3.3 FT. SOUTH

⑨ T6N
1/4 S31 S32
S4 R5E
TSN
1986

FOUND A 2 1/4" ALUMINUM PIPE WITH DNR CAP SET TO REPLACE THE ORIGINAL SCRIBED STONE. (I BURIED THE "STONE" ON THE WEST SIDE OF THE MONUMENT AS A MEMORIAL).

B.T.s FOUND:
26" FIR STUB~N82 1/2°E~56.1' (1909 BT, NO MARKS)
26" PINE SNAG~S44 1/2°E~26.4' (1909 BT, NO MARKS)

NEW B.T.s:
10" HEMLOCK~S67 3/4°E~25.8' (SCRIBED "1/4 S4 BT")
11" HEMLOCK~N68 1/4°W~10.0' (SCRIBED "1/4 S33 BT")
15" FIR~N3 1/2°W~18.6' (SCRIBED "1/4 S33 BT")
RESET DNR CARSONITE WITNESS POST 3.0 FT. NORTH
(SEE LCR BOOK 6-5, PAGE 27,28)

⑩ T6N R5E
S31 S32
S4 S3
TSN
1986

FOUND 2 1/2" IRON PIPE WITH BLM BRASS CAP SET TO REPLACE THE ORIGINAL NOTCHED STONE WHICH WAS FOUND ON THE NORTH SIDE OF THE PIPE.

B.T.s FOUND:
36" FIR SNAG~N88°E~91.7' (1909 BT W/COMPLETE SCRIBING)
24" HEMLOCK STUB~S27°W~36.0' (1909 BT, NO MARKS)
26" FIR SNAG~N25°W~19.8' (1909 BT, NO MARKS)
9" FIR STUMP~S33 1/2°E~15.7' (1966 BT W/HEALED SCAR)
8" HEMLOCK STUMP~S35 3/4°W~30.5' (1966 BT W/HEALED SCAR)
19" FIR~N50 1/2°E~33.9' (1966 BT W/HEALED SCAR)
12" FIR~N31 3/4°W~37.4' (1966 BT W/HEALED SCAR)

NEW B.T.s:
19" FIR~S21 1/4°E~49.0' (SCRIBED "TSN R5E S3 BT")
RESET CARSONITE WITNESS POST 3 FT. N30°W FROM CORNER.
(SEE LCR BOOK 6-5, PAGE 29,30)

⑪ GIFFORD
PINCHOT N.F.
G.P.S. POINT
002 CADASTRAL SURVEY
LS12412
1990

SET 2 1/2" ALUMINUM PIPE WITH 3 1/4" U.S.F.S. ALUMINUM CAP 25 FT. SOUTH OF TERMINUS OF "8055-A" SPUR ROAD (WEYERHAEUSER CO. ROAD SYSTEM).

R.P.s:
20" FIR STUMP~S18°E~24.39'
24" FIR STUMP~S40°W~29.43'
17" HEMLOCK STUMP~N15°W~12.81'
(DISTANCE TO 20d ALUMINUM NAIL IN TOP OF STUMP)

SCALE 1=100
DATE 1/4/91
JOB NO. 90-202
CALC. BY CEW
DRAWN BY CC
CHECKED BY
SHEET 2 OF 2

HAGEDORN, INC.
1924 Broadway Vancouver, Wa.
98663

Ph: (206) 696-4428 (503) 283-6778