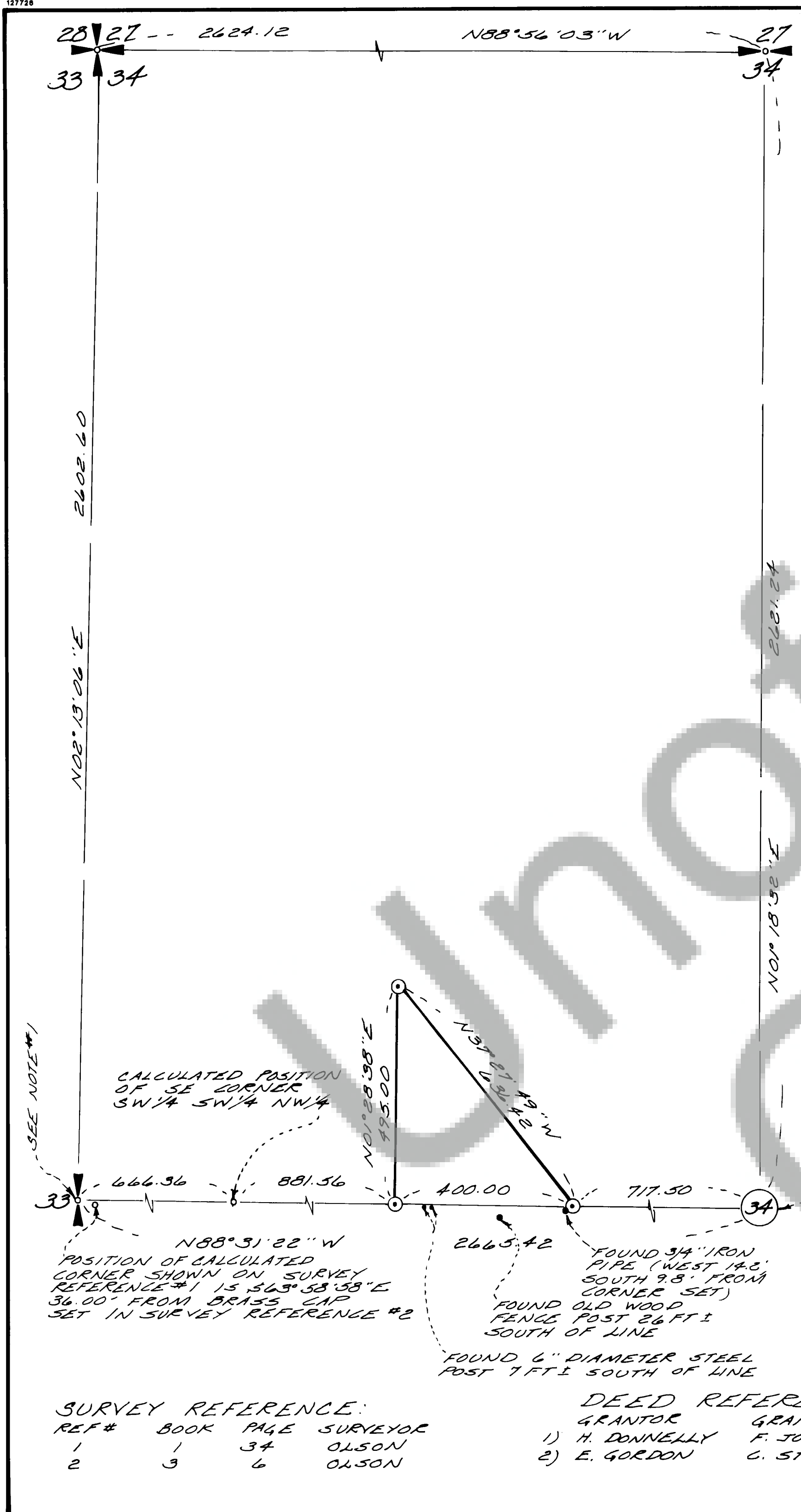


28
Page
3
Book



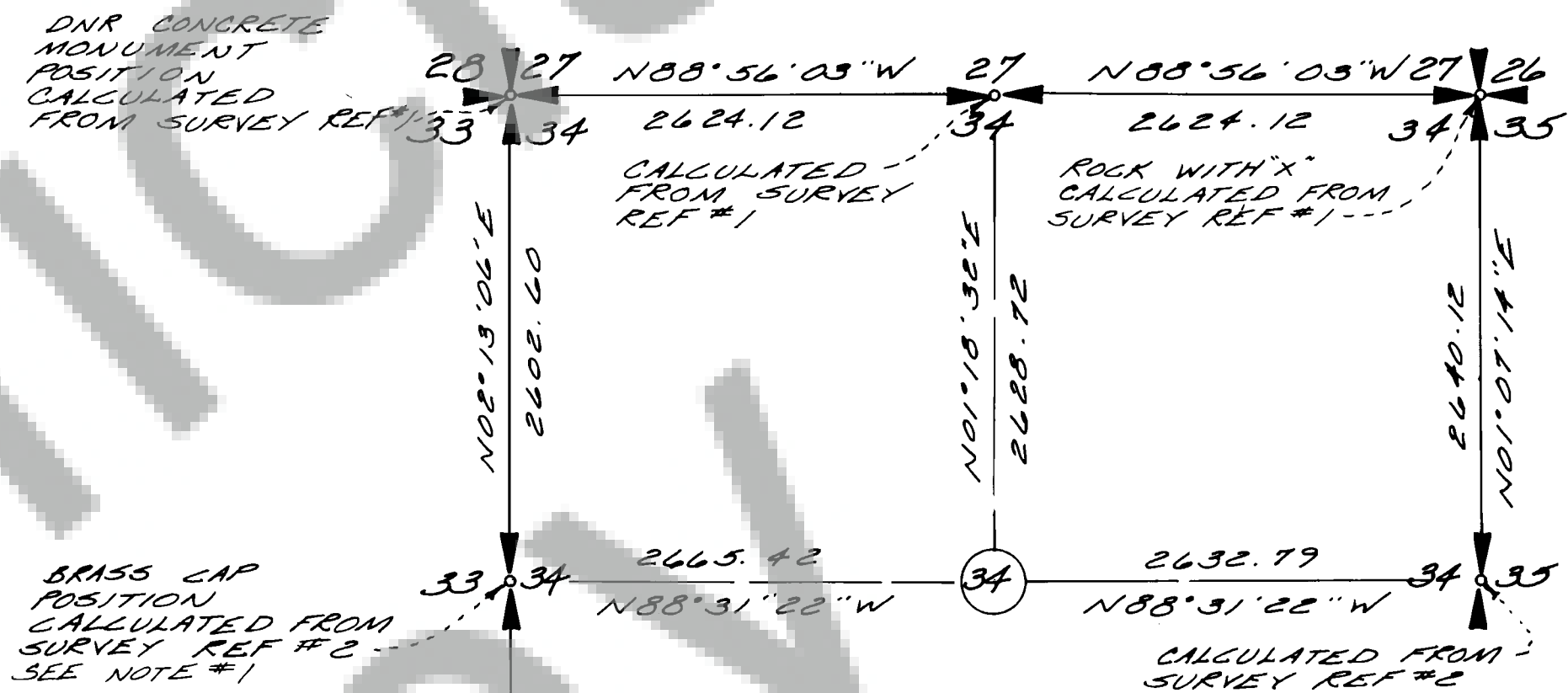
A FIELD TRAVERSE WAS PERFORMED USING A ONE MINUTE THEODOLITE AND AN ELECTRONIC DISTANCE MEASURING UNIT. THE FIELD TRAVERSE MET THE MINIMUM STANDARDS FOR SURVEYS AS DESIGNATED IN WAC 332-130-090.

NOTE #1: IN 1974 A SURVEY BY OLSON ENGINEERING WAS RECORDED (BOOK 1, PAGE 34) WHICH INDICATED THAT THE WEST 1/4 CORNER OF SECTION 34 WAS LOST AND THE POSITION WAS CALCULATED BY SINGLE PROPORTIONATE MEASUREMENT. SEVERAL OTHER SURVEYORS USED THIS CALCULATED POSITION UNTIL 1986. AT THAT TIME OLSON ENGINEERING RE-EVALUATED THE AVAILABLE HISTORICAL DATA AND RECORDS AND DETERMINED THAT THE 1/4 CORNER WAS NOT LOST AND RE-ESTABLISHED THE CORNER. A RECORD OF SURVEY WAS PREPARED AND RECORDED IN BOOK 3, PAGE 6 OF SURVEYS.

SURVEY

IN A PORTION OF
NW 1/4, SECTION 34, T.2N., R.6E., W.M.
SKAMANIA COUNTY, WASHINGTON

Minister & Glaeser
FEB 20 3 47 P.M. '90
BASIS OF BEARING = SURVEY BOOK 1
PAGE 34



SECTION DETAIL
SCALE 1" = 1000'

NOTE: MINISTER AND GLAESER SURVEYING, INC. MAKES NO WARRANTIES AS TO MATTERS OF UNWRITTEN TITLE SUCH AS ADVERSE POSSESSION, ACQUIESCENCE, ESTOPPEL, ETC.

SURVEYOR'S CERTIFICATE

This map correctly represents a survey made by me or under my direction in conformance with the requirements of the Survey Recording Act at the request of CLARENCE STROM in OCT 19 89.

Robert W. Glaeser
ROBERT W. GLAESER, PROFESSIONAL
LAND SURVEYOR, LS #15024

AUDITOR'S CERTIFICATE

Filed for record this 20th day of February 19 90 at 3:47 P.M.
in Book 3 of Surveys at page 28 at the request of
Minister and Glaeser Surveying, Inc.

Peggy B. Lowmy
Deputy County Auditor



⊙ INDICATES 1/2" IRON ROD WITH PLASTIC CAP SET.

SEE NOTE #1
CALCULATED POSITION OF SE CORNER SW 1/4 SW 1/4 NW 1/4

POSITION OF CALCULATED CORNER SHOWN ON SURVEY REFERENCE #1 IS $S43^{\circ}58'58''E$ 36.00' FROM BRASS CAP SET IN SURVEY REFERENCE #2

FOUND 3/4" IRON PIPE (WEST 1/4 SOUTH 9.8' FROM CORNER SET)
FOUND OLD WOOD FENCE POST 26 FT ± SOUTH OF LINE
FOUND 6" DIAMETER STEEL POST 7 FT ± SOUTH OF LINE

3/4" IRON PIPE POSITION CALCULATED FROM SURVEY REF #1

BRASS CAP POSITION CALCULATED FROM SURVEY REF #2 SEE NOTE #1

SURVEY REFERENCE:

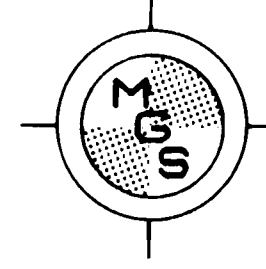
REF #	BOOK	PAGE	SURVEYOR
1	1	34	OLSON
2	3	6	OLSON

DEED REFERENCE:

GRANTOR	GRANTEE	BOOK	PAGE	DATE
1) H. DONNELLY	F. JOHNSON	52	324	JAN 1964
2) E. GORDON	C. STORM	78	677	SEPT 1980



SCALE: 1" = 200'
JOB # 89-105
DATE: 10-26-89
CALC BY: RWG
DRAWN BY: RJH
CHECKED BY:
SHEET 1 OF 1



MINISTER-GLAESER
SURVEYING INC.
2208 EAST EVERGREEN BLVD.
VANCOUVER, WA. 98661
(206) 694-3313