

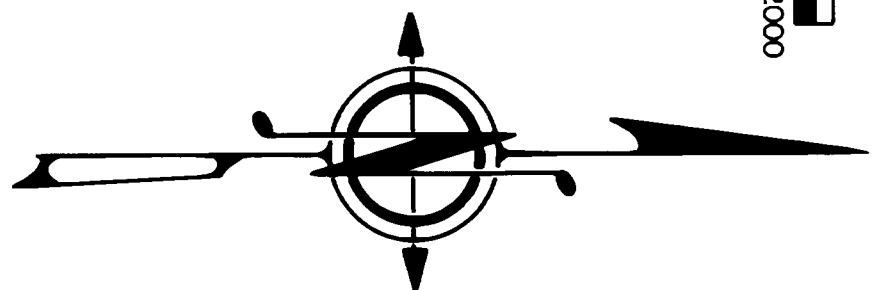
SKAMIA COUNTY
BY *Dept. of Natural Resources*
JAN 11 12 20 PM '90
D. Stawny
GARY E. COLE

"COLUMBIA COOLER" SURVEY



METHOD OF SURVEY

THIS SURVEY WAS DONE BY FIELD TRAVERSE USING A KERN DKM2-AE 1 SECOND THEODOLITE AND A KERN DM-503 ELECTRONIC DISTANCE METER. TRAVERSES WERE CLOSED INTO TRAVERSES DONE BY THE DNR FOR SURVEY SHOWN ON FINAL MAP #315 (SHEET 2 OF 3) FILED WITH THE SKAMANIA COUNTY ENGINEERS OFFICE, STEVENSON, WASHINGTON.



SCALE: 1" = 500'

BASIS OF MERIDIAN:

OCTOBER 1978 DEPARTMENT OF NATURAL RESOURCES SURVEY OF SECTION 13, TOWNSHIP 3 NORTH, RANGE 7 1/2 EAST, W.M., AS SHOWN ON DNR FINAL MAP #315 (SHEET 2 OF 3) FILED WITH THE SKAMANIA COUNTY ENGINEERS OFFICE, STEVENSON, WASHINGTON AND IS ALSO ON FILE IN THE PUBLIC LAND SURVEY OFFICE AT OLYMPIA, WASHINGTON.

DESCRIPTION OF STATE OWNERSHIP:

GOV'T, LOTS 1, 2, 3, 4, 5, 6, 7, 8 & 12;
W 1/2 OF NE 1/4;
SE 1/4;

ALL IN SEC. 13, T. 13 N., R. 7 1/2 E.

//////// INDICATES POSTED LINE. 1/2"x5"

PLASTIC PIPE SET OVER 1/2"
REBARS AT RANDOM INTERVALS
ALONG NOTED SUBDIVISIONAL LINE
TO MARK STATE PROPERTY LINE
AND ARE LOCATED WITHIN +/- ONE
FOOT OF THE ACTUAL
SUBDIVISIONAL LINE.

LEGEND

STANDARD D.N.R. MONUMENTS ARE:

2 3/8" O.D. ALUMINUM ALLOY PIPE WITH "BREAK-AWAY" PLASTIC BASE.

3 1/4" DIAMETER ALUMINUM ALLOY CAP STAMPED WITH PROPER CORNER IDENTIFICATION, PERMANENT, VERTICALLY ORIENTED MAGNETS ARE INCLUDED IN THE MONUMENT BASE AND CAP.

STANDARD D.N.R. CAPS ARE:

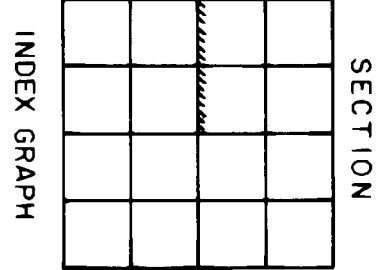
3 1/4" DIAMETER ALUMINUM ALLOY DISKS WITH A VERTICALLY ORIENTED MAGNETS AND STAMPED WITH PROPER CORNER IDENTIFICATION SET AS NOTED.

D.N.R. CONCRETE MONUMENTS ARE 3" DIAMETER WITH BRASS CAP STAMPED WITH PROPER CORNER IDENTIFICATION.

D.N.R. IRON PIPES ARE 1" DIAMETER WITH BRASS CAP STAMPED WITH PROPER CORNER IDENTIFICATION.

G.L.O. CORNER SYMBOLS:

- FOUND OR ACCEPTED
- CALCULATED - SET
- CALCULATED - NOT SET



A SURVEY IN

SECTION 13 TOWNSHIP 3 NORTH, RANGE 7 1/2 EAST, W.M.

STATE OF WASHINGTON

DEPARTMENT OF NATURAL RESOURCES

SHEET 1 OF 1
F.M. 709

AUDITOR'S CERTIFICATE

FILED FOR RECORD THIS 11th DAY OF January, 1990
AT 12:30 P.M. IN BOOK 3 OF SURVEYS AT PAGE 23
AT THE REQUEST OF THE WASHINGTON STATE
DEPARTMENT OF NATURAL RESOURCES

108549
AUDITOR'S FILE NUMBER
SKAMIA COUNTY AUDITOR

SURVEYOR'S CERTIFICATE

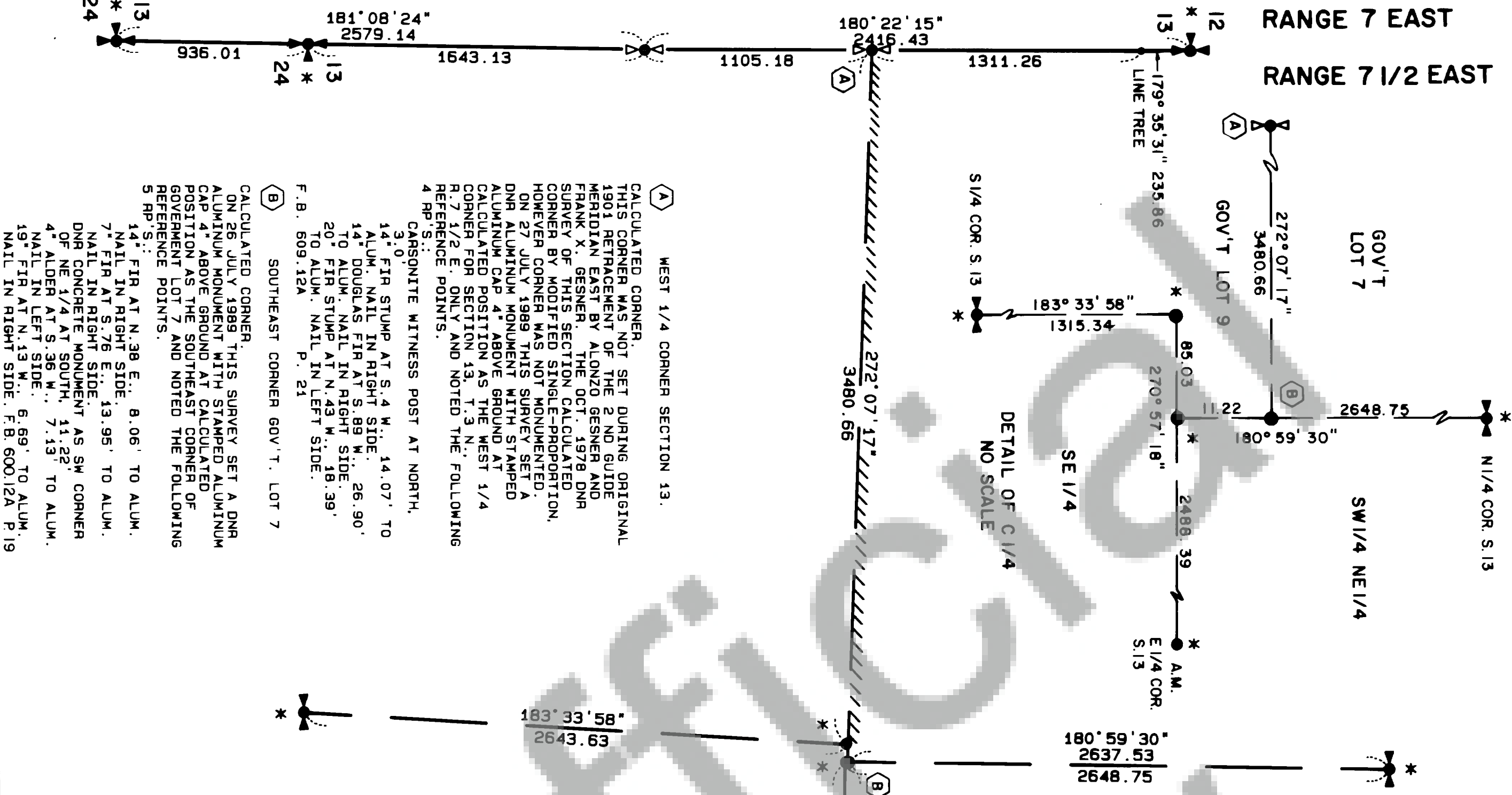
THIS MAP CORRECTLY REPRESENTS A SURVEY MADE BY ME
OR UNDER MY DIRECTION IN CONFORMANCE WITH THE
REQUIREMENTS OF THE SURVEY RECORDING ACT AT THE
REQUEST OF THE DEPARTMENT OF NATURAL RESOURCES
IN November, 1989.

H. THOMAS LAIRD JR., P.L.S.

21490
CERTIFICATE NUMBER



NARRATIVE:
THE PURPOSE OF THIS RECORD OF SURVEY IS TO MONUMENT CORNERS THAT WERE NOT SET DURING ORIGINAL OCTOBER 1978 DNR SURVEY. AS NOTED IN CORNER NOTES, CORNERS INDICATED WITH A '*' WERE NOT VISITED BY THIS SURVEY AND ARE OF RECORD UNDER DNR FINAL MAP #315 (SHEET 2 OF 3) FILED WITH THE SKAMANIA COUNTY ENGINEERS OFFICE, STEVENSON, WASHINGTON AND IS ALSO ON FILE IN THE PUBLIC LAND SURVEY OFFICE AT OLYMPIA, WASHINGTON.



(A) WEST 1/4 CORNER SECTION 13.

CALCULATED CORNER.
THIS CORNER WAS NOT SET DURING ORIGINAL 1901 RETRACEMENT OF THE 2ND GUIDE MERIDIAN EAST BY ALONZO GESSNER AND FRANK X. GESSNER. THE OCT. 1978 DNR SURVEY OF THIS SECTION CALCULATED CORNER BY MODIFIED SINGLE-PROPORTION, HOWEVER CORNER WAS NOT MONUMENTED. ON 27 JULY 1989 THIS SURVEY SET A DNR ALUMINUM MONUMENT WITH STAMPED ALUMINUM CAP 4" ABOVE GROUND AT CALCULATED POSITION AS THE WEST 1/4 CORNER FOR SECTION 13, T. 13 N., R. 7 1/2 E. ONLY AND NOTED THE FOLLOWING REFERENCE POINTS:
4 RP S.S. CONSONATE WITNESS POST AT NORTH,
3.0' FIR STUMP AT S. 4 W., 14.07' TO ALUM. NAIL IN RIGHT SIDE.
14.0' DOUGLAS FIR AT S. 89 W., 26.90' TO ALUM. NAIL IN RIGHT SIDE.
20' FIR STUMP AT N. 43 W., 18.39' TO ALUM. NAIL IN LEFT SIDE.
F.B. 609.12A P. 21

(B) SOUTHEAST CORNER GOV'T, LOT 7

CALCULATED CORNER.
ON 26 JULY 1989 THIS SURVEY SET A DNR ALUMINUM MONUMENT WITH STAMPED ALUMINUM CAP 4" ABOVE GROUND AT CALCULATED POSITION AS THE SOUTHEAST CORNER OF GOVERNMENT LOT 7 AND NOTED THE FOLLOWING REFERENCE POINTS:
5 RP S.S.:
14.0' FIR AT N. 38 E., 8.06' TO ALUM. NAIL IN RIGHT SIDE.
7' FIR AT S. 76 E., 13.95' TO ALUM. NAIL IN RIGHT SIDE.
DNR CONCRETE MONUMENT AS SW CORNER OF NE 1/4 AT SOUTH, 11.22' 4" ALDER AT S. 36 W., 7.13' TO ALUM. NAIL IN LEFT SIDE.
19' FIR AT N. 13 W., 6.69' TO ALUM. NAIL IN RIGHT SIDE. F.B. 600.12A P. 19