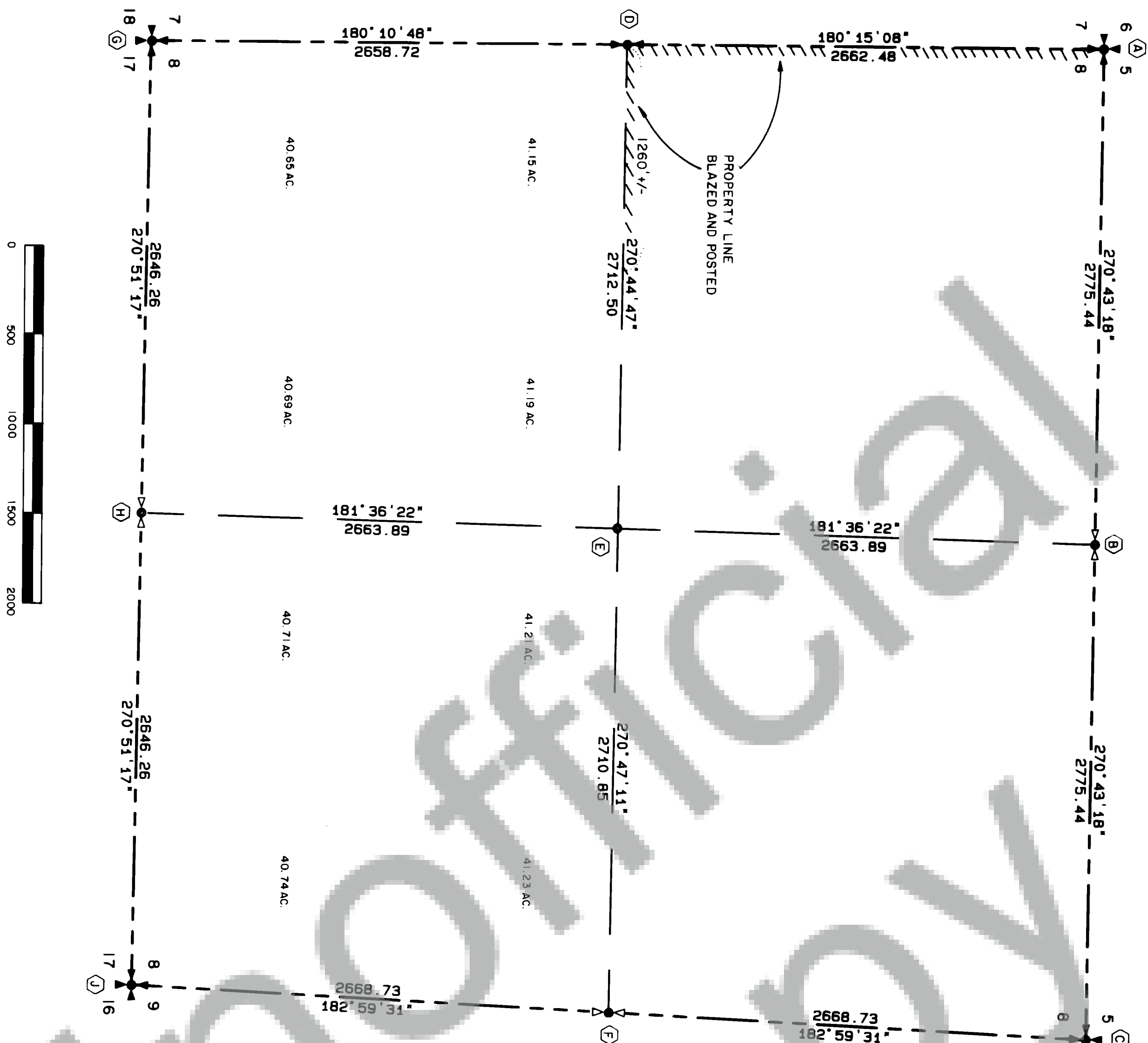


BY DNR
JUN 26 2 56 PM '89
A. D. WILKINS, JR.
G. H. 1108



AUDITOR'S CERTIFICATE

Filed for record this 26th day of JANUARY, 1989
at 2:56 P.M. in Book 3 of Surveys at page 2
at the request of the Washington State Department
of Natural Resources.

106486
Auditor's File Number

A. D. Wilkins, Jr.
Skamania County Auditor

SURVEYOR'S CERTIFICATE

This map correctly represents a survey made by me or under my
direction in conformance with the requirements of the Survey Re-
cording Act at the request of the Department of Natural Resources
in October 31, 1988

H. Thomas Laird Jr., P.L.S.
H. Thomas Laird Jr., P.L.S.

21490
Certificate Number



SECTION 8 TOWNSHIP 2 NORTH, RANGE 6 EAST, W.M.

SURVEYED BY:
H. THOMAS LAIRD JR.,
P.L.S.

STATE OF WASHINGTON
DEPARTMENT OF NATURAL RESOURCES

CHECKED BY:
H. THOMAS LAIRD JR.,
P.L.S.
DATE: OCTOBER 1988

- ACCEPTED CORNER.**
FD: 1/2" REBAR WITH STAMPED PLASTIC CAP AND 3 REFERENCE POINTS AS SET BY JACK SHINKEE, PLUS #13518 FROM FOUND MONUMENT. EVIDENCE AS NOTED IN BOOK 3 OF SURVEYS AT PAGE 271. CORNER WAS SET FROM G.L.O. CREEK CALLS. HELD FOR CORNER THIS SURVEY.
- 3 RP S. 1/4
B. FIR AT N. 72° E., 13.34'
C. FIR STUMP AT S. 59° E., 8.24'
F. B. 600.30 P. 53
- NE CORNER SECTION 8**
CALCULATED MID-POINT CORNER POSITION. CORNER WAS NOT SEARCHED FOR NOR SET DURING THIS SURVEY.
- ACCEPTED CORNER.**
FD: 4 X 4 DEPT. OF NATURAL RESOURCES GONGS CORNER MONUMENT WITH STAMPED PLASTIC CAP AND 3 REFERENCE POINTS AS SET IN 1971 BY C. E. WHITTEN, DNR EMPLOYEE FROM THE SECTION 9 BEARING TREE. HELD FOR CORNER THIS SURVEY.
- 30" HEMLOCK BEARING TREE STUMP
1/2" VISIBLE SCRIBE 59° AT NOTES FROM THE 1983 SURVEY BY CHARLES SEARS CALLS SECTION 9 BEARING TREE AS A WHITE PINE.
- 24" HEMLOCK BEARING TREE STUMP WITH VISIBLE AXE MARKS BUT NO VISIBLE SCRIBE AT S. 54° W., 29 FT. BEARING TREE AT N. 15° W., 11.51 FEET. ABOVE 2 MENTIONED BEARINGS. DO NOT FIT G.L.O. DISTANCES. THIS SURVEY SET A CARSONITE POST ALONG SIDE OF THE FOUND DNR MONUMENT.
- 3 RP S. 1/4
B. FIR AT S. 29° E., 13.62'
C. HEMLOCK AT S. 59° W., 23.09'
F. B. 600.30 P. 2
- W 1/4 CORNER SECTION 8**
FD: 1/2" REBAR WITH STAMPED PLASTIC CAP SET AT CALCULATED MID-POINT POSITION BY JACK SHINKEE, PLUS #13518 AS NOTED ON RECORDED SURVEY FILED IN BOOK 2 OF SURVEYS AT PAGE 271. CORNER BEARS N. 65° E., 3.14 FEET. AND IS NOT ACCEPTED THIS SURVEY.
- 46" FIR BEARING TREE STUMP WITH THE BARK OFF AND VISIBLE OLD AXE WORK AT S. 71° E., 9.90 FEET. G.L.O. NOTES FROM THE 1983 SURVEY BY CHARLES E. SEARS MIS-CALLED THE SPECIES OF THE SOUTHEAST BEARING TREE. THE SOUTHEAST BEARING TREE (FALLEN) IS A CEDAR BEARING TREE UNROOT (FALLEN) 21.8 FEET (THE EAST) AT N. 32° W.
- THIS SURVEY SET A DNR ALUMINUM MONUMENT WITH STAMPED ALUMINUM CAP 3" ABOVE GROUND FROM THE FOUND SOUTHEAST BEARING TREE STUMP.
- 4 RP S. 1/4
B. FIR AT N. 30° E., 22.26'
C. HEMLOCK AT S. 85° E., 8.05'
21° FIR AT S. 12° W., 20.71'
24° FIR AT N. 84° W., 15.69'
F. B. 600.30 P. 55
- C 1/4 CORNER SECTION 8**
CALCULATED CORNER. NOT SET THIS SURVEY.
- E 1/4 CORNER SECTION 8**
CALCULATED CORNER. NO ORIGINALS FOUND. EVIDENCE WAS FOUND. THEREFORE THIS SURVEY SET A DNR ALUMINUM MONUMENT WITH STAMPED ALUMINUM CAP 4" ABOVE GROUND AT A CALCULATED MID-POINT POSITION LOCATED IN A B.O.F. A POWER TRANSMISSION LINE 4 RP S. 1/4.
- 16" FIR AT S. 77° E., 34.81'
14" HEMLOCK AT S. 28° E., 39.70'
8" HEMLOCK AT S. 17° W., 25.04'
X. ON EASTERLY TOWER LEG 5.7' ABOVE GROUND AT S. 80° W., 162.0'
F. B. 600.30 P. 54
- SW CORNER SECTION 8**
ACCEPTED CORNER.
FD: 1/2" REBAR WITH PLASTIC L.S. CAP IN A MOUND OF STONE AS SET BY JACK SHINKEE, PLUS #13518 FROM FOUND MONUMENT. EVIDENCE AS NOTED IN BOOK 2 OF SURVEYS AT PAGE 271. HELD FOR CORNER THIS SURVEY.
- 40" FIR BEARING TREE STUMP WITH NO VISIBLE SCRIBE AT N. 26° E., 11.88 FEET.
- 11" FIR BEARING TREE SUB WITH NO VISIBLE SCRIBE AT S. 30° E., 27.05 FEET.
- 3 RP S. 1/4
B. DOUGLAS FIR AT N. 55° E., 4.84'
C. DOUGLAS FIR AT S. 49° W., 15.20'
F. B. 600.30 P. 58
- S 1/4 CORNER SECTION 8**
CALCULATED MID-POINT CORNER POSITION. CORNER WAS NOT SEARCHED FOR NOR SET DURING THIS SURVEY.
- SE CORNER SECTION 8**
ACCEPTED CORNER.
FD: 5/8" REBAR WITH PLASTIC L.S. CAP FLUSH WITH THE GROUND AS SET BY JACK SHINKEE, PLUS #9576. DATE SET UNKNOWN. HELD FOR CORNER THIS SURVEY.
- A MOUND OF STONES AT N. 30° E., 4.0 FEET. ORIGIN UNKNOWN.
- THE REMAINS OF AN OLD FENCE CORNER AT N. 5° W., 6.9 FEET.
- 20" HEMLOCK STUMP AT S. 56° E., 2.09 FEET. BEARING TREE AT N. 15° W., 11.51 FEET. ABOVE 2 MENTIONED BEARINGS. DO NOT FIT G.L.O. DISTANCES. THIS SURVEY SET A CARSONITE POST 2 FEET MARKS AT N. 41° W., 44.0 FEET.
- THIS SURVEY SET A CARSONITE POST 2 FEET MARKS AT N. 41° W., 44.0 FEET.
- 4 RP S. 1/4
B. FIR AT N. 10° E., 39.49'
C. FIR AT S. 43° E., 9.78'
6" FIR AT S. 51° W., 15.29'
8" FIR AT N. 71° W., 26.94'
F. B. 600.30 P. 1
- GRID FACTOR:** 0.9998649
TRUE NORTH: -1° 9' 30" AT C 1/4 CORNER.
- DESCRIPTION OF STATE OWNERSHIP:**
S 1/2 OF SEC. 8, T. 2 N., R. 6 E., W. M.
- SCALE:** 1" = 500'
BASIS OF MERIDIAN:
WASHINGTON COORDINATE SYSTEM, SOUTH ZONE, N.A.D. 1923 DATUM
DERIVED FROM TIES TO THE FOLLOWING DNR CONTROL STATIONS:
1 - 3N - 5E
3 - 2N - 6E
4 - 2N - 6E
2 - 3N - 6E
- G.L.O. CORNER SYMBOLS:**
FOUND OR ACCEPTED
CALCULATED - SET
CALCULATED - NOT SET
- LEGEND**
Set - Indicates standard D.N.R. monument unless otherwise noted.
STANDARD D.N.R. MONUMENTS ARE:
2 1/2" O.D. aluminum alloy pipe with "break-away" plastic base.
3 1/2" diameter aluminum alloy cap stamped with proper corner identification, permanent, vertically oriented magnets are included in the monument base and cap.
STANDARD D.N.R. CAPS ARE:
3 1/2" diameter aluminum alloy disks with a vertically oriented magnet and stamped with proper corner identification set as noted.
D.N.R. concrete monuments are 3 1/2" diameter with brass cap stamped with proper corner identification.
D.N.R. iron pipes are 1 1/2" diameter with brass cap stamped with proper corner identification.