

106186

BOOK 7/6 PAGE 68

LAND CORNER RECORD

HAMPSTUR CORPORATION
1010 Douglas A3
LONGVIEW, WASHINGTON 98632T 7 N.R. 6 E. W.M. SKAMANIA County
Segregated Surveys: Corner Code No. Z-21Name: SW corner of Section 36 Corner No.: _____

DLC, HES, Tract, Mining Claim, Indian Allotment, Federal Reserve, Townsite.

1. History of Corner Establishment and Subsequent Restoration:

This corner was originally established in 1900, by Lewis Shelton under GLO contract #552, at which time he set a post for the corner and scribed 4 BT's. Then in 1921, Chester Pecore remonumented the corner with an iron pipe and brass cap under his GLO contract under group 19. Then on August 30, 1988, HAMPSTUR CORP. found the above corner had been destroyed by a "cat road" and remonumented the corner, as shown in the diagram below, from the original BT's found; while working on a corner restoration project for PLUM CREEK TIMBER CO. under the direction of C. Hampton, LS #18,087.

2. Description of Evidence Found:

ORIGINAL GLO CORNER: (2"x36" iron pipe with brass cap); destroyed by "cat roads".
ORIGINAL BT'S:

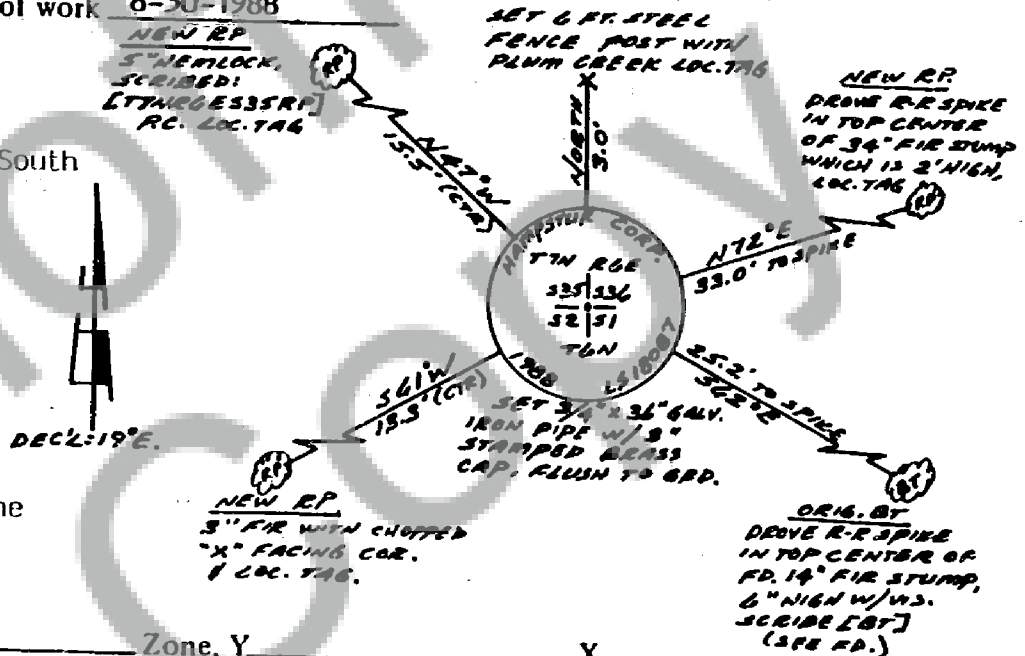
- (12" Fir, N42°E--38 lks.); fd. a 16" "low-cut" stump at record location.
- (10" Fir, S62°45'E--22 lks.); fd. 14 " "low-cut" stump with visible scribe [BT], at S62°E--25.2 ft. (possible error in GLO notes).
- (10" Fir, S61°40'W--15 lks.); fd. 18" stump with heal-over face at record location.
- (14" Fir, N56°W--37 lks.); fd. 24" stump with heal-over face, 8 ft. high, at record location.

Note: added BT tags and blue paint to all BT's.

3. Describe Monument, Accessories and Corollary Data to Perpetuate this Corner Location. Diagram corner and indicate meridian and reference to map of record. Surveyor's Field Book No. PS-056 Page No. 7-8 Date of work 8-30-1988

LOCATION:

- on a gentle North slope.
- near the intersection of fire trails leading to the North, South and East.
- on the East edge of approx. 12 yr. old reprod. (recently planted Fir to the Northeast and 3 yr. old reprod to the Southeast.
- approx. 200 ft. South of an abrupt descent towards the North.
- S55°W--approx. 250 ft. from the end of a rutted spur road.

Washington Plane Coordinates: _____ Zone, Y _____ X _____
Order Accuracy. Derived From: _____

Pin Pointed on Photo No. _____ Date _____ Located at _____

SURVEYOR'S CERTIFICATE

This corner record correctly represents work performed by me or under my direction in compliance with the provisions of Chapter 50, Laws of 1977. Date October 17, 1988

Signature Calvin J. HamptonLS. #18,087
Certificate No

AUDITOR'S CERTIFICATE

This corner record was filed for record this _____ day of _____ 19____ at _____ M. In _____ of _____ at page _____ at the request of _____

County Auditor

Registered S
Ins. S
Ind. S
F. S
In. S

Form prescribed by Bureau of Surveys and Maps pursuant to the provisions of Section 5 (2), Chapter 50, Laws of 1973.

FILED FOR RECORD
BY HAMPSTUR CORP.

NOV 14 4 13 PM '88

GARY H. OSGN