

106173

BOOK 6/6 PAGE 37

HAMPSTUR CORPORATION
1010 Douglas A3
LONGVIEW, WASHINGTON 98632

LAND CORNER RECORD

SKAMANIA

County

T 6 N, R 6 E, W.M.

Corner Code No. G-9

Segregated Surveys:

Name: 1/4 corner between S.8/S.9

Corner No.:

DLC, HES, Tract, Mining Claim, Indian Allotment, Federal Reserve, Townsite.

1. History of Corner Establishment and Subsequent Restoration:

This corner was originally established in 1921 by Chester W. Pecore under GLO contract, group 19; (the iron pipe and brass cap shown in the diagram below was set at that time). In 1957, Pettijohn Engineering used the corner for a survey in Section 8, then in 1977, Hagedorn, Inc. again found and used the corner as shown on their survey map recorded in BOOK 1 of SURVEYS at PAGE 142 in the records of Skamania County. Hagedorn again used the corner during a 1985 survey as recorded in BOOK 2 of SURVEYS at PAGE 236 in Skamania County. Then on July 25, 1988, HAMPSTUR CORP. located the corner during a corner restoration project for PLUM CREEK TIMBER CO., under the direction of C. Hampton, LS #18,087.

2. Description of Evidence Found:

ORIGINAL GLO CORNER: (1"x36" iron pipe with brass cap, 28" in ground); fd. corner as described in good condition.

ORIGINAL GLO BT'S:

- (16" Fir, S52°E--18 lks.); fd. a 26" stump, 4 ft. high, with heal-over and vis. scribe [BT] at record location--added a R/R spike to the top center and reference tags.
- (10" Fir, S30°W--11 lks.); fd. only a stub rotted-off at the ground at record location.

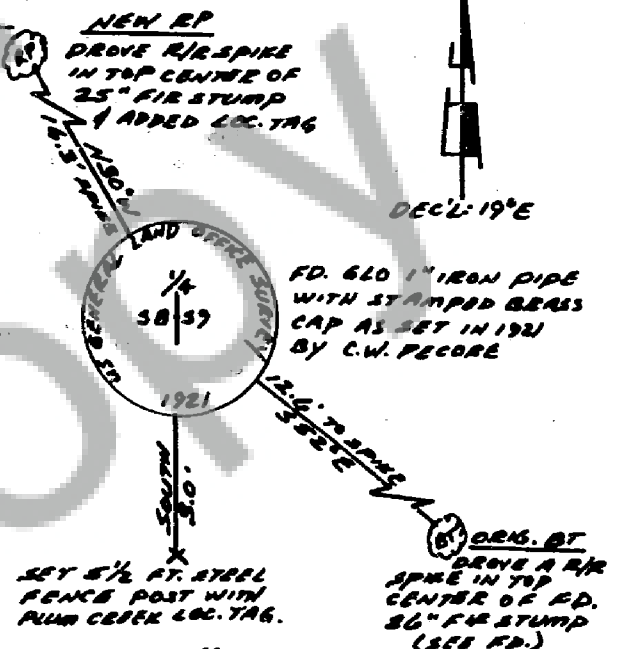
3. Describe Monument, Accessories and Corollary Data to Perpetuate this Corner Location. Diagram corner and indicate meridian and reference to map of record. Surveyor's Field Book No.

PS-056 Page No. 10 Date of work 7-25-1988

LOCATION:

- on a 75% North slope.
- approx. 150 ft. South of a creek, which runs W-NW.
- S55°E--approx. 200 ft. from same creek where it passes under road in culvert.
- South--approx. 250 ft. from a landing on a spur road.
- in area of recent clear-cut.

Note: Blue paint and PLUM CREEK location tags were added to all references during this time.



Washington Plane Coordinates: Zone, Y

Order Accuracy. Derived From:

Pin Pointed on Photo No. Date Located at

SURVEYOR'S CERTIFICATE

This corner record correctly represents work performed by me or under my direction in compliance with the provisions of Chapter 50, Laws of 1973. Date October 17, 1988

Signature Calvin J. Hampton

LS. #18,087

Certificate No



AUDITOR'S CERTIFICATE

Filed for record this day of 19 at M. In Book of at page at the request of

County Auditor

Form prescribed by Bureau of Surveys and Maps pursuant to the provisions of Section 5 (2), Chapter 50, Laws of 1973.

FILED FOR RECORD

SKAMANIA CO. WASH.

BY

Nov 14 3:41 PM '88

GARY H. HANCOCK

COUNTY CLERK

GARY H. HANCOCK