

106175

BOOK 6/6 PAGE 34
HAMPSTUR CORPORATION
1010 Douglas A3
LONGVIEW, WASHINGTON 98632

LAND CORNER RECORD

SKAMANIA

County

T 6 N, R 6 E, W.M.

Corner Code No. E-9

Segregated Surveys:

Name: SE. Section Corner of Section 5 Corner No.:

DLC, HES, Tract, Mining Claim, Indian Allotment, Federal Reserve, Townsite.

1. History of Corner Establishment and Subsequent Restoration:

This corner was originally established in 1921 by Chester W. Pecore under GLO contract, group 19; (the iron pipe and brass cap shown in the diagram below set at that time). The corner was located and used during a 1977 survey by Hagedorn, Inc. as indicated on the "record of survey" in BOOK 1 of SURVEYS at PAGE 142 in Skamania County. Then on July 24, 1988, the corner was found and maintained, as indicated in the diagram below, by HAMPSTUR CORP. under the direction of C. Hampton, LS#18,087, during a 1988 corner restoration project for PLUM CREEK TIMBER CO.

2. Description of Evidence Found:

ORIGINAL GLO CORNER: (2" dia. x 3' long iron post with brass cap, 28" in ground); fd. as described in good condition.

ORIGINAL GLO BT'S:

- (8" Fir, N68 $\frac{1}{2}$ °E--47 lks.); fd. 11" stump, 2 $\frac{1}{2}$ ft. high, with healed-over face, in good condition--added spike in center and reference tags.
- (24" Fir, S27°E--29 lks.); fd. 36" stump, 5 ft. high, with healed-over face in good condition at record location--added spike to center and reference tags.
- (8" Hemlock, S44°W--41 lks.); fd. uprooted stump with heal-over, out of position
- (14" Fir, N47°W--49 lsk.); fd. 20" stump, 6 ft. high, with healed-over face in good condition at record location--added spike to center and reference tags.

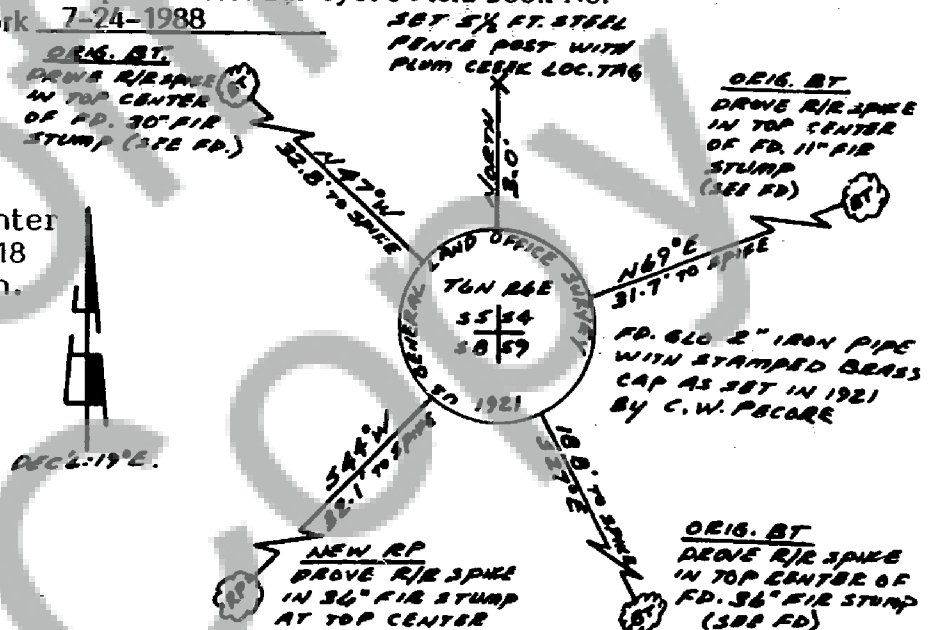
3. Describe Monument, Accessories and Corollary Data to Perpetuate this Corner Location. Diagram corner and indicate meridian and reference to map of record. Surveyor's Field Book No.

PS-056 Page No. 11-12 Date of work 7-24-1988

LOCATION:

- in area of 3 yr. old reprod.
- at toe of hill below road, on a small flat area.
- N40°W--approx. 85 ft. from the center of a 3-way road jct., which is 0.18 miles Southwest of 5 mi. road sign.
- fd. DNR tag on 6"x6" Cedar post, which reads "West-46 ft."

Note: Blue paint and PLUM CREEK location tags were added to all references at this time.

Washington Plane Coordinates: Zone, Y X
Order Accuracy. Derived From:

Pin Pointed on Photo No. Date Located at

SURVEYOR'S CERTIFICATE

This corner record correctly represents work performed by me or under my direction in compliance with the provisions of Chapter 50, Laws of 1973. Date October 17, 1988

Signature Calvin J. Hampton

LS. #18,087

Certificate No



AUDITOR'S CERTIFICATE

Filed for record this day of 19 at M. In Book of at page at the request of

County Auditor

Registered 5
Initials
Index
Filed
Indexed

Form prescribed by Bureau of Surveys and Maps pursuant to the provisions of Section 5 (2), Chapter 50, Laws of 1973.

FILED FOR RECORD
SKAMANIA CO. WASH.
BY HAMPSTUR CORP.

Nov 14 3 25 PM '88

CARY H. HEDGECOCK