

106172

BOOK 6/6 PAGE 31

HAMPSTUR CORPORATION

1010 Douglas A3
LONGVIEW, WASHINGTON 98632

LAND CORNER RECORD

T 6 N, R 6 E, W.M.

SKAMANIA

County

Segregated Surveys:

Corner Code No. DE-10

Name: S.W.1/64 corner of Section 4

Corner No.:

DLC, HES, Tract, Mining Claim, Indian Allotment, Federal Reserve, Townsite.

1. History of Corner Establishment and Subsequent Restoration:

In 1977, Hagedorn, Inc. established this corner with a 5/8" rebar and made 3 references as indicated on their survey map recorded in BOOK 1 of SURVEYS at PAGE 142, with Skamania County. Then in 1985, Hagedorn, Inc. remonumented the corner with the USFS aluminum mon. as shown in the diagram below and again referenced the corner, as indicated on their survey map recorded in BOOK 2 of SURVEYS at PAGE 236, with Skamania County. Then on July 25, 1988 HAMPSTUR CORP. maintained the corner, as shown in the diagram below, while working on a corner restoration project for PLUM CREEK TIMBER CO., under the direction of C. Hampton, LS #18,087.

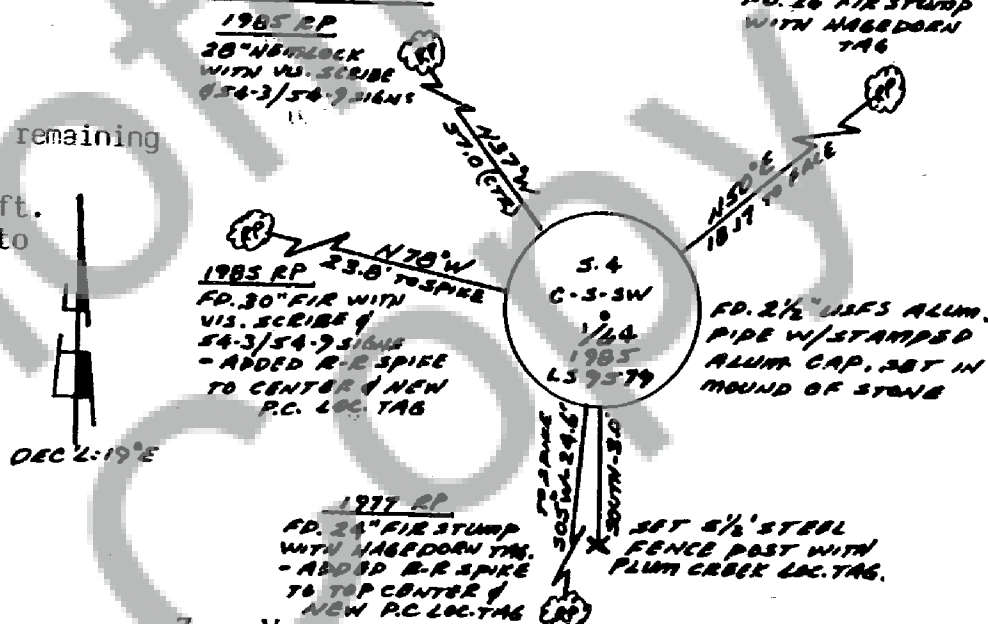
2. Description of Evidence Found:

Found the USFS aluminum monument and 4 references (made in 1977 and 1985 as mentioned above), as described in the diagram below.

3. Describe Monument, Accessories and Corollary Data to Perpetuate this Corner Location. Diagram corner and indicate meridian and reference to map of record. Surveyor's Field Book No. PS-056 Page No. 13 Date of work 7-25-1988

LOCATION:

- on a 100% Southwest slope.
- at the Southeast corner of a remaining stand of timber.
- approx. 50 ft. North and 50 ft. East of a creek which flows to the Northwest.
- found a USFS posted line running to the North and to the West.



Washington Plane Coordinates:

Zone, Y

Order Accuracy. Derived From:

X

Pin Pointed on Photo No.

Date

Located at

SURVEYOR'S CERTIFICATE

This corner record correctly represents work performed by me or under my direction in compliance with the provisions of Chapter 50, Laws of 1973. Date October 19, 1988

Calvin J. Hampton

LS. #18,087

Certificate No



AUDITOR'S CERTIFICATE

Filed for record this: day of 19 at M. In

of at page at the request of

County Auditor

Registered

S

Form prescribed by Bureau of Surveys and Maps pursuant to the provisions of Section 5 (2), Chapter 50, Laws of 1973.