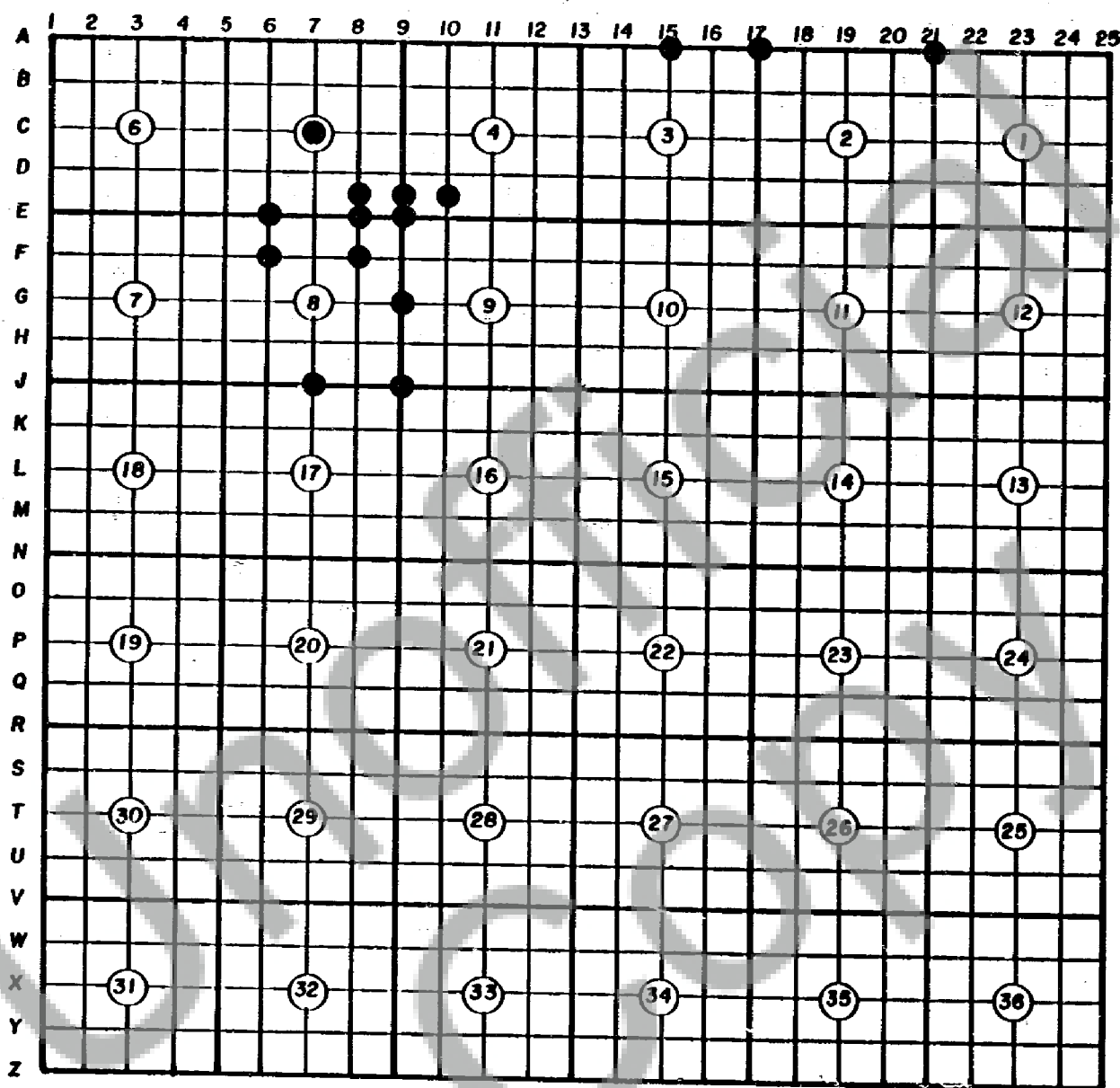


CORNER RECORD INDEX DIAGRAM—HAMPSTUR CORPORATION Job: BB-510T. L.N.R. L.E. W.M.CORNER LEGEND

● NEW RECORDING DURING
THIS PROJECT

NOTES—

FILED FOR RECORD
SKAMANA CO. WASH
BY HAMPSTUR CORP

Nov 14 2 40 PM '88

st. *Nuis, Dep.*
AUDITOR
GARY M. OLSON

Recorded	<i>S</i>
Indexed	<i>S</i>
Filed	
Mailed	



100105

BOOK 6/6 PAGE 25

HAMPSTUR CORPORATION

1010 Douglas A3
LONGVIEW, WASHINGTON 98632

LAND CORNER RECORD

T 6 N, R 6 E., W.M. SKAMANIA County
Segregated Surveys: Corner Code No. A-15
Name: North 1/4 corner of Section 3 Corner No.: _____
DLC, HES, Tract, Mining Claim, Indian Allotment, Federal Reserve, Townsite.

1. History of Corner Establishment and Subsequent Restoration:

This corner was originally established in 1900 by Lewis Shelton under GLO contract #552; at which time the corner was a Cedar post and 2 BT's were scribed. In 1921, Chester W. Pecore remonumented the corner with the iron pipe and brass cap shown in the diagram below, under GLO contract, group #19. Then on July 26, 1988, HAMPSTUR CORP. located the original corner and referenced it as shown in the diagram below, while working on a corner restoration project for PLUM CREEK TIMBER CO., under the direction of C. Hampton, LS. #18,087.

2. Description of Evidence Found:

1921 GLO MONUMENT: (1"x36" iron post with brass cap, 28" in the ground); fd. as described.
ORIGINAL 1900 GLO BT'S:

- (20" Fir, N37°45'E--27 lks.); fd. 24" Fir stump, 2 ft. high, with heal-over and 54-3 tag at record location.
- (12" Fir, S89°45'W--9 lks.); fd. 15" Fir stump, 4 ft. high, with heal-over and 54-3 tag at record location.

3. Describe Monument, Accessories and Corollary Data to Perpetuate this Corner Location. Diagram corner and indicate meridian and reference to map of record. Surveyor's Field Book No.

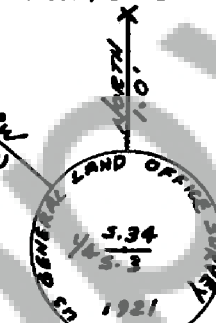
PS-056 Page No. 5 Date of work 7-26-1988

LOCATION:

- on a 20% NW. slope.
- in a stand of 8 yr. old reprod.
- approx. 200 ft. South of the 10 road, at a point which is approx. 625 ft. West of the jet. with the 13 rd.
- placed 4"x4"x8' treated post w/ location tag (which reads "South-approx. 190 ft. to corner"), on South edge of 10 road.

Nov 14 2 46 PM '88
d. New, rep.
AUDITOR
GARY H. OLSON

SET 6 FT. STEEL
FENCE POST WITH
PLUM CREEK LOC. TAG.



FD. GLO. 1"x36" IRON
PIPE W/ STAMPED
BRASS CAP. AS SET
IN 1921 GLO SURVEY.

NEW RP
7" FIR, SCRIBED
[1/4 S & R]
Q.R. SPIES IN CENTER
P.C. LOCATION TAG

Washington Plane Coordinates: _____ Zone, Y _____ X _____
Order Accuracy. Derived From: _____

Pin Pointed on Photo No. _____ Date _____ Located at _____

SURVEYOR'S CERTIFICATE

This corner record correctly represents work performed by me or under my direction in compliance with the provisions of Chapter 50, Laws of 1973. Date October 19, 1988

Signature Calvin J. Hampton LS. #18,087
Certificate No _____



AUDITOR'S CERTIFICATE

Filed for record this _____ day of _____ 19____ at _____ M. In
Book _____ of _____ at page _____ at the request of _____

County Auditor

Registered S
Indexed, vir S
Indexed S
Filed _____
Mailed _____

Form prescribed by Bureau of Surveys and Maps pursuant to the provisions of Section 5 (2), Chapter 50, Laws of 1973.