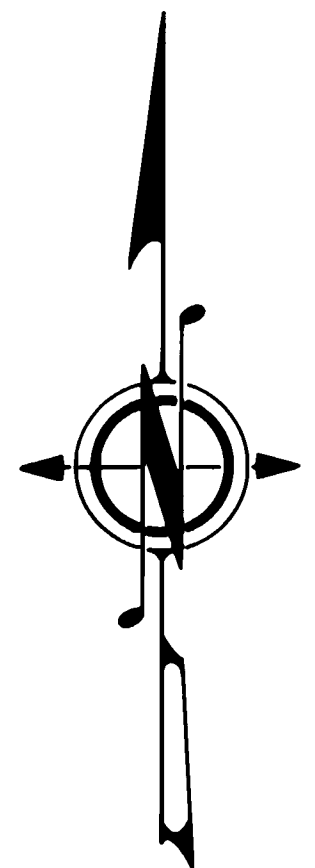


FILED FOR RECORD
 BY D.N.R.
 FEB 22 3 00 PM '88
 D. R. N. Co., Inc.
 ASSESSOR
 GARY E. LARSON



SCALE: 1" = 500'
 BASIS OF MERIDIAN:

W.C.S., SOUTH ZONE DATUM
 DETERMINED FROM TIES TO THE
 FOLLOWING D.N.R. 3RD. ORDER
 CONTROL STATIONS:

- # 1 - 7N. - 6E. (1987)
- # 2 - 7N. - 6E. (1987)
- # 3 - 7N. - 6E. (1987)
- # 1 - 6N. - 5E. (1984)
- # 2 - 6N. - 5E. (1987)

TRUE NORTH: -1° 10' 11" AT C 1/4

GRID FACTOR: 0.9999054

DESCRIPTION OF STATE OWNERSHIP
 GOV'T. LOTS 9 & 10;
 EAST 1/2 OF SW 1/4;
 SOUTH 1/2 OF SE 1/4,
 ALL IN SEC. 31, T.7N., R.6E., W.M.

G.L.O. CORNER SYMBOLS

- FOUND OR ACCEPTED
- CALCULATED - SET
- CALCULATED - NOT SET

LEGEND

Set - Indicates standard D.N.R. monument unless otherwise noted.

STANDARD D.N.R. MONUMENTS ARE:

2 1/2" O.D. aluminum alloy pipe with "breakaway" plastic base.

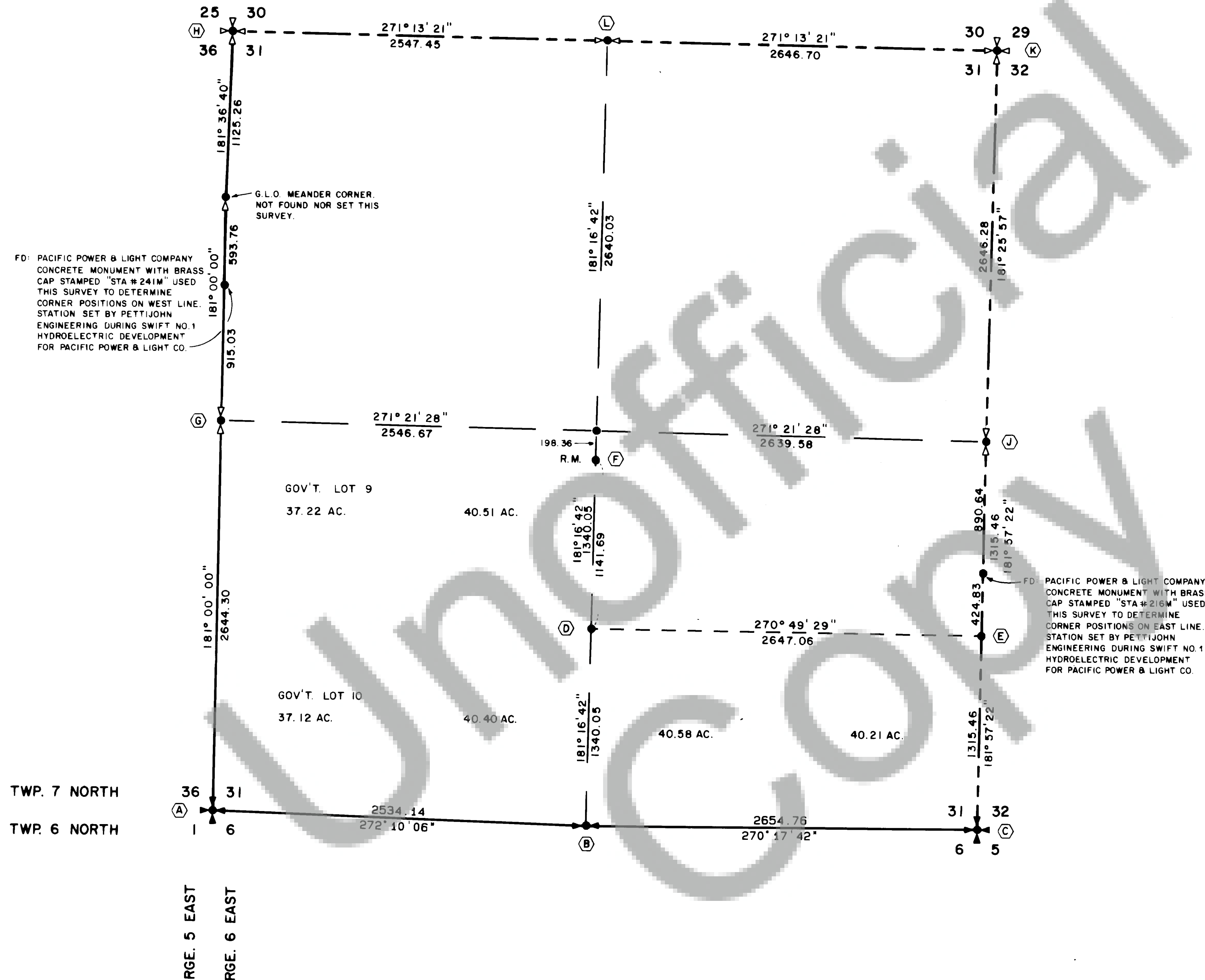
3/4" diameter aluminum alloy cap stamped with proper corner identification, permanent, vertically oriented magnets are included in the monument base and cap.

STANDARD D.N.R. CAPS ARE:

3/4" diameter aluminum alloy disks with a vertically oriented magnet and stamped with proper corner identification set as noted.

D.N.R. concrete monuments are 3" diameter with brass cap stamped with proper corner identification.

D.N.R. iron pipes are 1" diameter with brass cap stamped with proper corner identification.



AUDITOR'S CERTIFICATE

Filed for record this _____ day of _____, 19 _____
 at _____ M. in Book _____ of Surveys at page _____
 at the request of the Washington State Department
 of Natural Resources.

Auditor's File Number _____

Skamania County Auditor

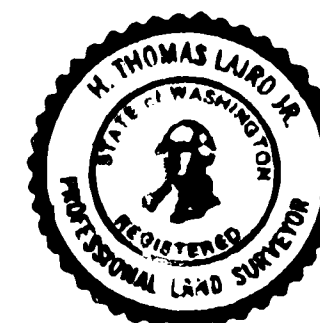
SURVEYOR'S CERTIFICATE

This map correctly represents a survey made by me or under my
 direction in conformance with the requirements of the Survey Re-
 cording Act at the request of the Department of Natural Resources
 in January 26, 1988.

H. Thomas Laird Jr.
 H. THOMAS LAIRD JR., P.L.S.

21490

Certificate Number



A SURVEY IN SECTION 31 TOWNSHIP 7 NORTH, RANGE 6 EAST, W.M.

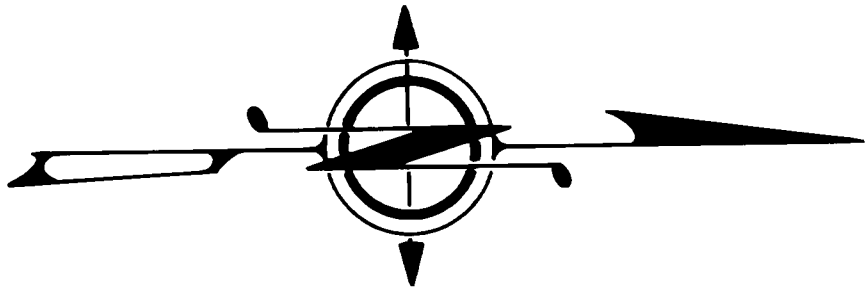
SURVEYED BY:
 H. THOMAS LAIRD JR.,
 P.L.S.

DRAWN BY:
 B. ERIK NEDERGARD

STATE OF WASHINGTON
 DEPARTMENT OF NATURAL RESOURCES

CHECKED BY:
 LAWRENCE J. HOLT,
 P.L.S.

DATE:
 17 NOV 1987



- (A) U.S. 9 L.O. BRASS CAP ON 3" PIPE. REPLACEMENT SURVEY BY CHESTER W. PECORE. REPLACING A FOUND BADLY DECAYED POST. HELD BRASS CAP FOR CORNER.
- 34" LIVE HEMLOCK BEARING TREE AT N. 27° 30' E. 15 FT. TO NAIL IN SIDE OF POST.
- 20" ROTTED FIR BEARING TREE STUMP AT S. 52° W. 35 FEET.
- 15" ROTTED HEMLOCK BEARING TREE STUMP AT N. 43° E. 15 FEET.
- 3 RP S. 38" FIR STUMP AT N. 1° E. 23.60'. 37" CEDAR AT N. 87° W. 56.91'. 34.61'. F.B. 601.08 P. 9
- (B) U.S. 6 L.O. IRON POST WITH BRASS CAP SET DURING 1924 SURVEY. REPLACEMENT SURVEY BY CHESTER W. PECORE. POST WAS FOUND BADLY BENT, BUT THE LOWER 18" WAS STRAIGHT IN THE GROUND.
- 10" FIR BEARING TREE STUMP AT N. 2° E. 15 FEET AND STUMP REMAINS WITH 15" 1/2" DIAMETER.
- 10" FOUND BEARING TREE STUMP.
- 16" FIR BEARING TREE STUMP WITH NO VISIBLE MARKS AT S. 7° E. 8.69 FT.
- THIS SURVEY SET A DNR ALUMINUM MONUMENT WITH STAMPED ALUMINUM CAP AT POSITION FORMERLY OCCUPIED BY THE IRON POST.
- 6 L.O. IRON POST AND BRASS CAP POST.
- 4 RP S. 4" IRON MONUMENT AS A MEMORIAL.
- 23" FIR STUMP AT S. 88° E. 29.32'. 25" FIR STUMP AT S. 13° E. 22.03'. 14" FIR STUMP AT N. 82° W. 13.41'. 30" FIR STUMP AT N. 8° W. 24.37'. F.B. 601.08 P. 10
- (C) 2" U.S. 6 L.O. IRON POST WITH STAMPED BRASS CAP SET DURING 1924 SURVEY. REPLACEMENT SURVEY BY CHESTER W. PECORE. POST WAS FOUND BADLY BENT, BUT THE LOWER 18" WAS STRAIGHT IN THE GROUND.
- 10" FIR BEARING TREE STUMP AT N. 2° E. 15 FEET AND STUMP REMAINS WITH 15" 1/2" DIAMETER.
- 10" FOUND BEARING TREE STUMP.
- 16" FIR BEARING TREE STUMP WITH NO VISIBLE MARKS AT S. 7° E. 8.69 FT.
- THIS SURVEY SET A DNR ALUMINUM MONUMENT WITH STAMPED ALUMINUM CAP AT POSITION FORMERLY OCCUPIED BY THE IRON POST.
- 6 L.O. IRON POST AND BRASS CAP POST.
- 4 RP S. 4" IRON MONUMENT AS A MEMORIAL.
- 23" FIR STUMP AT S. 88° E. 29.32'. 25" FIR STUMP AT S. 13° E. 22.03'. 14" FIR STUMP AT N. 82° W. 13.41'. 30" FIR STUMP AT N. 8° W. 24.37'. F.B. 601.08 P. 11
- (D) THIS SURVEY SET A DNR ALUMINUM MONUMENT WITH STAMPED ALUMINUM CAP AT CALCULATED POSITION AS CENTER SOUTH 1/16 CORNER.
- 4 RP S. 33" FIR AT N. 89° E. 50.54'. 33" FIR AT S. 29° E. 46.95'. 47" FIR AT S. 17° W. 61.79'. 26" FIR AT N. 41° W. 11.81'. F.B. 601.08 P. 52
- (E) THIS SURVEY SET A DNR ALUMINUM MONUMENT WITH STAMPED ALUMINUM CAP BETWEEN A LARGE ROOT AND A LARGE ROOT FROM A 38" FIR STUMP AT CALCULATED POSITION AS THE SOUTH 1/16 CORNER BETWEEN SECTIONS 31 AND 32.
- 5 RP S. 38" FIR STUMP AT N. 28° E. 2.66'. 35" FIR AT S. 8° E. 24.39'. 7" FIR AT N. 52° W. 7.85'. F.B. 601.08 P. 50
- (F) THIS SURVEY SET A DNR ALUMINUM MONUMENT WITH STAMPED ALUMINUM CAP AT CALCULATED POSITION AS THE CENTER 1/4 CORNER. MONUMENT WAS SET ON LINE BETWEEN CENTER 1/4 AND SECTION 1/4 CORNER. NOT SET AS IT FALLS IN THE VALE RESERVATION.
- 3 RP S. 17" FIR AT N. 45° E. 3.12'. 9" FIR AT S. 68° W. 13.23'. 12" FIR STUMP AT N. 35° W. 6.94'. F.B. 601.08 P. 53
- (G) CALCULATED CORNER. NOT SET THIS SURVEY. POSITION ESTABLISHED AT A CALCULATED POSITION ESTABLISHED LOCATION BETWEEN SINGLE SOUTHWEST CORNER OF SECTION 31 AND FOUND CONCRETE MONUMENT (STA. 2414) ON THE WEST LINE OF SECTION 31 AS SHOWN ON SHEETS 5 AND 6 OF PROJECT NO. 2111. WASHINGTON PACIFIC POWER AND LIGHT COMPANY (SWIFT NO. 1 AND LIGHT COMPANY (SWIFT NO. 1 DEVELOPMENT) BY PETTILJOHN ENGINEERING COMPANY.
- (H) CALCULATED CORNER. NOT SET THIS SURVEY. POSITION ESTABLISHED FROM FOUND CONCRETE MONUMENT (STA. 2414) ON THE WEST LINE OF SECTION 31 AND THE FOUND SOUTHWEST CORNER OF SECTION 31. HOLDING PLAT ANGLE AND DISTANCES AS SHOWN ON SHEET 5 AND 6 OF PROJECT NO. 2111 OF WASHINGTON PACIFIC POWER AND LIGHT COMPANY (SWIFT NO. 1 DEVELOPMENT) BY PETTILJOHN ENGINEERING COMPANY.
- (I) CALCULATED CORNER. NOT SET THIS SURVEY. POSITION ESTABLISHED FROM FOUND CONCRETE MONUMENT (STA. 2414) ON THE EAST LINE OF SECTION 31 AND THE FOUND SOUTHWEST CORNER OF SECTION 31. HOLDING PLAT ANGLE AND DISTANCES AS SHOWN ON SHEET 5 AND 6 OF PROJECT NO. 2111 OF WASHINGTON PACIFIC POWER AND LIGHT COMPANY (SWIFT NO. 1 DEVELOPMENT) BY PETTILJOHN ENGINEERING COMPANY.
- (J) CALCULATED CORNER. NOT SET THIS SURVEY. POSITION ESTABLISHED FROM FOUND CONCRETE MONUMENT (STA. 2414) ON THE EAST LINE OF SECTION 31 AND FOUND SOUTHWEST CORNER OF SECTION 31. HOLDING PLAT ANGLE AND DISTANCES AS SHOWN ON SHEET 5 AND 6 OF PROJECT NO. 2111 OF WASHINGTON PACIFIC POWER AND LIGHT COMPANY (SWIFT NO. 1 DEVELOPMENT) BY PETTILJOHN ENGINEERING COMPANY.
- (K) CALCULATED CORNER. NOT SET THIS SURVEY. POSITION ESTABLISHED FROM FOUND CONCRETE MONUMENT (STA. 2414) ON THE EAST LINE OF SECTION 31 AND THE FOUND SOUTHWEST CORNER OF SECTION 31. HOLDING PLAT ANGLE AND DISTANCES AS SHOWN ON SHEET 5 AND 6 OF PROJECT NO. 2111 OF WASHINGTON PACIFIC POWER AND LIGHT COMPANY (SWIFT NO. 1 DEVELOPMENT) BY PETTILJOHN ENGINEERING COMPANY.
- (L) CALCULATED CORNER. NOT SET THIS SURVEY. POSITION ESTABLISHED AT A CALCULATED POSITION ESTABLISHED LOCATION BETWEEN SINGLE-PROPORTIONED CORNER OF SECTION 31 AND FOUND CONCRETE MONUMENT (STA. 2414) ON THE WEST LINE OF SECTION 31 AS SHOWN ON SHEETS 5 AND 6 OF PROJECT NO. 2111. WASHINGTON PACIFIC POWER AND LIGHT COMPANY (SWIFT NO. 1 DEVELOPMENT) BY PETTILJOHN ENGINEERING COMPANY.

LEGEND

Set - Indicates standard D.N.R. monument unless otherwise noted.

STANDARD D.N.R. MONUMENTS ARE:

2" O.D. aluminum alloy pipe with "break-away" plastic base

3" diameter aluminum alloy cap stamped with proper corner identification, permanent, vertically oriented magnets are included in the monument base and cap.

STANDARD D.N.R. CAPS ARE:

3 1/2" diameter aluminum alloy disks with a vertically oriented magnet and stamped with proper corner identification set as noted.

D.N.R. concrete monuments are 3" diameter with brass cap stamped with proper corner identification.

D.N.R. iron pipes are 1" diameter with brass cap stamped with proper corner identification.

AUDITOR'S CERTIFICATE

Filed for record this 22ND day of FEBRUARY, 19 88 at 3:09 P.M. in Book 2 of Surveys at page 281-282 at the request of the Washington State Department of Natural Resources.

Auditor's File Number 104739 AM O'Sullivan Skamania County Auditor

SURVEYOR'S CERTIFICATE

This map correctly represents a survey made by me or under my direction in conformance with the requirements of the Survey Recording Act at the request of the Department of Natural Resources in January 14, 19 88.

H. Thomas Laird Jr. H. THOMAS LAIRD JR., P.L.S. Certificate Number 21490



A SURVEY IN

SECTION 31 TOWNSHIP 7 NORTH, RANGE 6 EAST, W.M.

SURVEYED BY: H. THOMAS LAIRD JR., P.L.S. CHECKED BY: LAWRENCE J. HOLT, P.L.S.

DRAWN BY: B. ERIK NEDERGAARD DATE: 16 NOV. 1987

STATE OF WASHINGTON
DEPARTMENT OF NATURAL RESOURCES