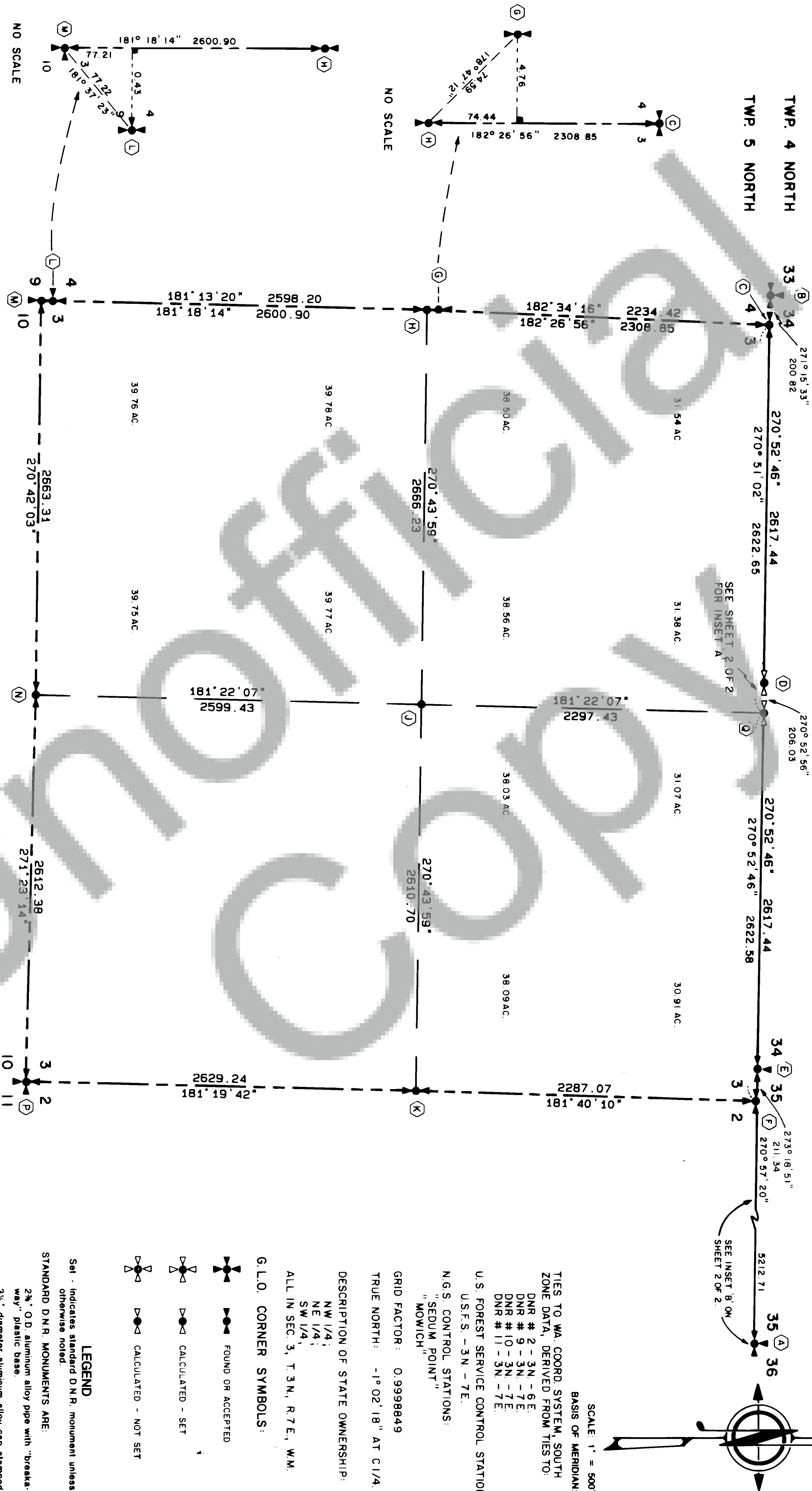


104738

BOOK 2 PAGE 278

FILED FOR RECORD
BY P.N.R. WASH
FEB 22 3 06 PM '08
A. J. W. 100
CAR 100 3 21



SEE SHEET 2 OF 2 FOR CORNER NOTES AND INSET 'A'

AUDITOR'S CERTIFICATE

Filed for record this _____ day of _____, 19____
at _____ M. in Book _____ of Surveys at page _____
at the request of the Washington State Department
of Natural Resources.

Auditor's File Number _____

Snomia County Auditor

SURVEYOR'S CERTIFICATE

This map correctly represents a survey made by me or under my
direction in conformance with the requirements of the Survey Re-
cording Act at the request of the Department of Natural Resources
in January 22, 19____.

H. Thomas Laird Jr., P.L.S.

Certificate Number 21490



SECTION 3 TOWNSHIP 3 NORTH, RANGE 7 EAST, W.M.

SURVEYED BY:
H. THOMAS LAIRD JR.,
P.L.S.
DRAWN BY:
B. ERIK NEDERGAARD

STATE OF WASHINGTON
DEPARTMENT OF NATURAL RESOURCES

CHECKED BY:
LAWRENCE J. HOLTT,
P.L.S.
DATE:
28 DEC 1987

(A) ACCEPTED CORNER.
FD: DNR CONCRETE MONUMENT WITH STAMPED BRASS CAP SET IN 1983 BY H.T. LAIRD JR. PLUS 21490 FROM FOUND ROTTEN 36" FIR BEARING TREE STUB AS SHOWN ON D.N.R. FINAL MAP NO. 477 AND NOTED ON LAND CORNER RECORD FILED UNDER AUDITORS FILE NO. 96787, RECORDS OF SKAMANIA COUNTY, WASHINGTON.

(B) 37° FIR BEARING TREE STUB AT N. 64° E., 50.8 FEET.
35° FIR BEARING TREE STUB AT N. 36° W., 31.0 FEET.
THIS SURVEY SET A DNR ALUMINUM MONUMENT WITH STAMPED ALUMINUM CAP ABOVE GROUND IN AN OLD CATALPA ROAD SOUTH 8 CORNER OF SECTION 34, T. 4 N., R. 7 E. AT WEST. 200.8 FEET.

(C) 13° FIR AT N. 54° E., 19.31'.
8° FIR AT S. 74° E., 3.79'.
9° FIR AT S. 26° W., 12.39'.
9° FIR AT N. 37° W., 5.60'.
F.B. 600.27 P. 47.

(D) 38° ROTTEN FIR BEARING TREE STUB WITH NO MARKS AT S. 38° E., 41.8 FT. STANDARD CORNER FOR SECTION 34, T. 4 N., R. 7 E. AT WEST. 200.8 FEET.

(E) CALCULATED CORNER.
THIS SURVEY SET A DNR ALUMINUM MONUMENT WITH STAMPED ALUMINUM CAP 4" ABOVE GROUND IN AN OLD CATALPA ROAD SOUTH 8 CORNER OF SECTION 34, T. 4 N., R. 7 E. 4 RP'S.

(F) 12° FIR AT N. 50° E., 11.83'.
14° HEMLOCK AT S. 18° E., 17.53'.
11° HEMLOCK AT S. 58° W., 20.09'.
13° FIR AT N. 65° W., 41.60'.
F.B. 600.27A P. 29.

(G) ACCEPTED CORNER.
FD: DEPT. OF NATURAL RESOURCES STAMPED BRASS CAP CEMENTED INTO A ROCK. SET IN 1987 BY DNR EMPLOYEE. TOM RICH LAYED P.S. FROM 2 FOUND BEARING TREES AS SHOWN ON DNR FINAL MAP #477 AND NOTED ON LAND CORNER RECORD FILED UNDER AUDITOR'S FILE #96785, RECORDS OF SKAMANIA COUNTY, WASHINGTON.

(H) ACCEPTED CORNER.
FD: DEPT. OF NATURAL RESOURCES 4"x4" CONCRETE MONUMENT WITH STAMPED BRASS CAP 5" ABOVE GROUND AS SET IN 1970 AS THE EAST 1/4 CORNER OF SEC. 34 ONLY. HELD FOR CORNER THIS SURVEY.

(I) DEPT. OF NATURAL RESOURCES 4"x4" CONCRETE MONUMENT WITH STAMPED BRASS CAP 5" ABOVE GROUND AS SET IN 1970 AS THE WEST 1/4 CORNER OF SEC. 34 ONLY. HELD FOR CORNER THIS SURVEY.

(J) THIS SURVEY SET A DNR ALUMINUM MONUMENT WITH STAMPED ALUMINUM CAP 4" ABOVE GROUND AT CALCULATED POSITION AS THE CENTER 1/4 CORNER.

(K) 60° FIR BEARING TREE STUB WITH NO VISIBLE MARKS AT N. 39° W., 44.9 FT. 40° FIR BEARING TREE STUB WITH NO VISIBLE MARKS AT N. 75° SOUTHWEST 1/4 CORNER.

(L) ACCEPTED CORNER.
FD: DEPT. OF NATURAL RESOURCES 4"x4" CONCRETE MONUMENT WITH STAMPED BRASS CAP 4" ABOVE GROUND SET IN 1970 AS CLOSING CORNER TO SECTION 34 AND 8 ONLY BY J. LAMSON. ONE OF WHICH HAS SCRIBING (THE PINE). HELD FOR CORNER THIS SURVEY.

(M) 3 RP'S: 17° FIR STUMP AT S. 74° E., 30.45'.
21° FIR STUMP AT S. 10° W., 11.43'.
13° FIR STUMP AT N. 5° W., 18.77'.
F.B. 600.27 P. 57.

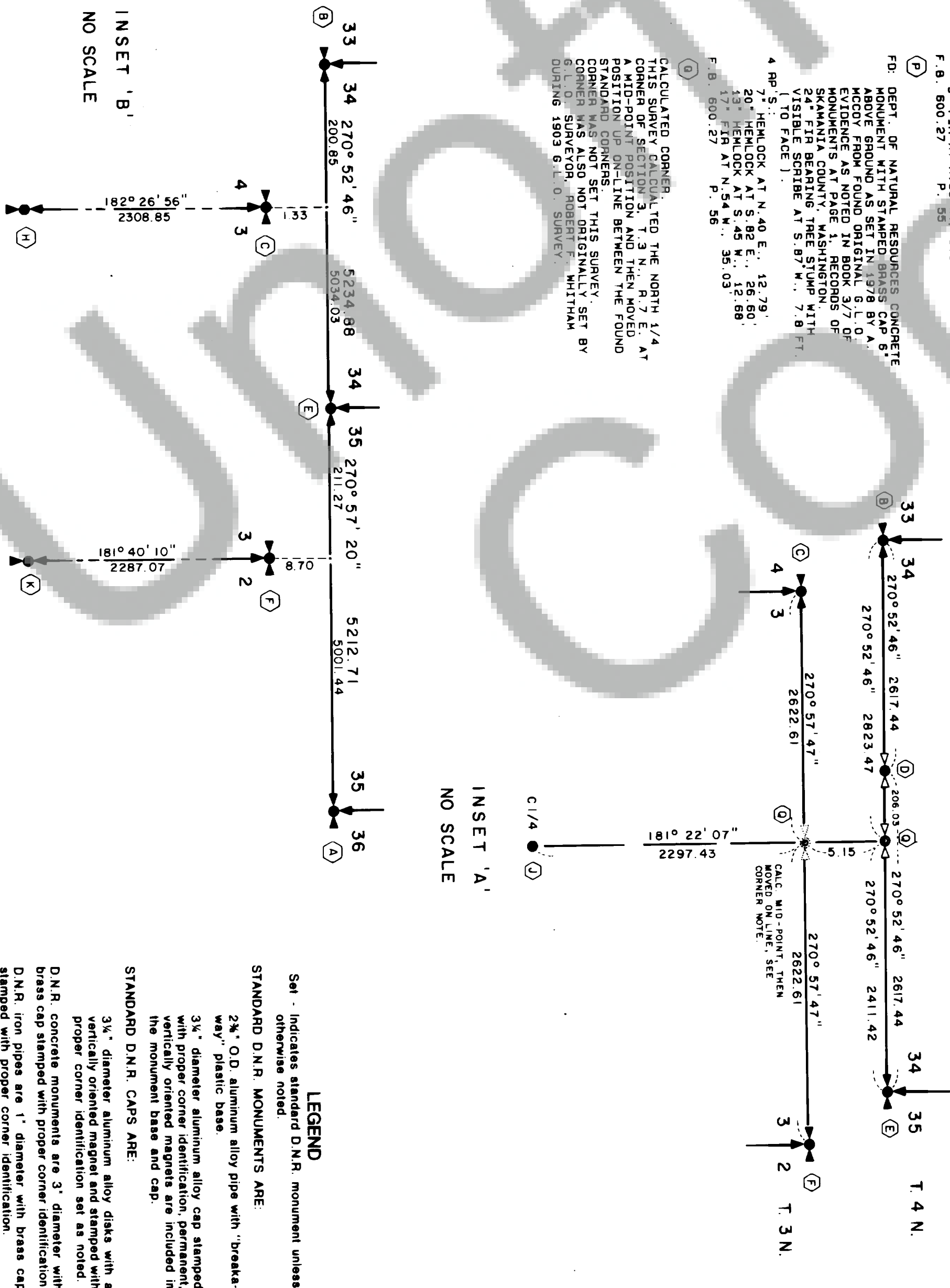
(N) DEPT. OF NATURAL RESOURCES 4"x4" CONCRETE MONUMENT WITH STAMPED BRASS CAP 5" ABOVE GROUND A TOP OF ROAD CUT SET IN 1978 BY J. LAMSON. CORNER TO SECTION 3 AND 10 ONLY BY J. LAMSON FROM 2 BEARING TREES, ONE OF WHICH HAS SCRIBING (THE PINE). HELD FOR CORNER THIS SURVEY.

(O) DEPT. OF NATURAL RESOURCES CONCRETE BRASS CAP 5" ABOVE GROUND AS SET IN 1978 BY J. LAMSON. CORNER TO SECTION 3 AND 10 ONLY BY J. LAMSON FROM 2 BEARING TREES, ONE OF WHICH HAS SCRIBING (THE PINE). HELD FOR CORNER THIS SURVEY.

(P) DEPT. OF NATURAL RESOURCES CONCRETE BRASS CAP 5" ABOVE GROUND AS SET IN 1978 BY J. LAMSON. CORNER TO SECTION 3 AND 10 ONLY BY J. LAMSON FROM 2 BEARING TREES, ONE OF WHICH HAS SCRIBING (THE PINE). HELD FOR CORNER THIS SURVEY.

(Q) CALCULATED CORNER.
THIS SURVEY CALCULATED THE NORTH 1/4 AT CORNER OF SECTION 33, T. 4 N., R. 7 E. POSITION ON-LINE BETWEEN THE FOUND STANDARD CORNERS.

(R) 3 RP'S: 17° FIR STUMP AT S. 74° E., 30.45'.
21° FIR STUMP AT S. 10° W., 11.43'.
13° FIR STUMP AT N. 5° W., 18.77'.
F.B. 600.27 P. 57.



AUDITOR'S CERTIFICATE

Filed for record this 23rd day of FEBRUARY, 1988, at 3:06 P. M. in Book 2 of Surveys at page 278-279 at the request of the Washington State Department of Natural Resources.

104738

Skamania County Auditor

SURVEYOR'S CERTIFICATE

This map correctly represents a survey made by me or under my direction in conformance with the requirements of the Survey Recording Act in the request of the Department of Natural Resources in January 1988.

H. Thomas Laird Jr., P.L.S.

21490

Certificate Number



A SURVEY IN SECTION 3 TOWNSHIP 3 NORTH, RANGE 7 EAST, W.M.

SURVEYED BY: H. THOMAS LAIRD JR., P.L.S.

STATE OF WASHINGTON. DEPARTMENT OF NATURAL RESOURCES

CHECKED BY: LAWRENCE J. HOLT, P.L.S. DATE: 30 DEC 1987