

102266

BOOK 5/5 PAGE 11

State of Washington
DEPARTMENT OF NATURAL RESOURCES
BUREAU OF SURVEYS AND MAPS
LAND CORNER RECORD

32	33
5	4

Skamania County

T 5 N, R 5 E, W.M.

Corner Code No. A-9

Segregated Surveys:

Name: n/a

Corner Number: n/a

1. History of Corner Establishment and Subsequent Restoration:

Originally established in 1909 by GLO surveyor C. Frank Rhodes with a notched stone and 4 dead BTs.

No subsequent restoration found.

2. Description of Evidence Found:

Original stone with proper notches.

50" fir stub BT, 12 feet high, at S14E 51 feet.

40" fir stump BT, crushed by 2 windfalls, at S37W 7 feet.

40" fir stump BT at S4W 20 feet.

Rotted remains of 24" fir at N79E 25 feet.

FILED FOR RECORD
SKAMANIA CO. WASH
BY

Dec 1 11 PM '86

AUDITOR
GARY M. OLSON

3. Describe Monument, Accessories and Corollary Data to Perpetuate this Corner Location.

Diagram corner and indicate meridian and reference to map of record. Surveyor's Field Book No. 601.07, Page No. 54. Date of work June 12, 1986.

Replaced original stone with DNR aluminum monument with stamped cap.

See reverse side for corner diagram.

SURVEYOR'S CERTIFICATE

[Seal]

This corner record correctly represents work performed by me or under my direction in compliance with the provisions of Chapter 50, Laws of 1973.
Date: November 18, 1986.

H. Thomas Laird Jr.
Signature

21490
Certificate No.

**AUDITOR'S CERTIFICATE**

Filed for record this _____ day of _____ 19____ at _____ M.
In Book _____ of _____ at page _____ at the request
of Washington State Department of Natural Resources.

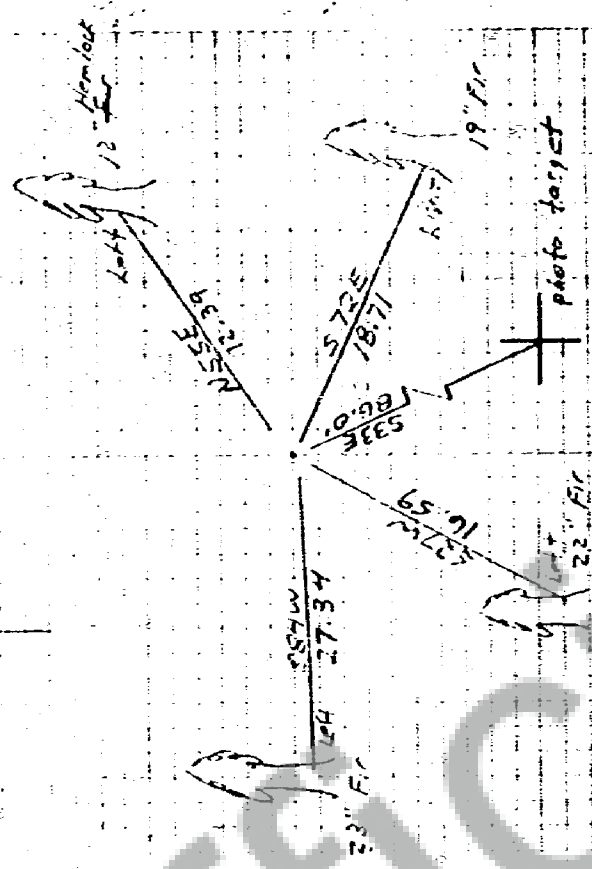
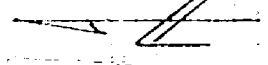
County Auditor

54

Land =
Brosnan
Harris

6-12-86

521.54
551.54
752.08
795.6



Corner is an Alum Mon with 50" 3" above ground. It is set in the buried out portion of a 42" log. The 50" BT broke off and fell on corner. Set original stone on south side of monument.

60' Set Sonoson setting with 4 return on east end 2 inches on west
on dead fir N 79° E 38.2 25.1
50' dead fir S 14° E 77.2 52.6
40' dead fir S 37° W 10.2 6.6
40' dead fir N 4° W 31.2 20.5

Section Corner $\frac{52.1}{5.4}$ T 56° N R 5° E

Found 13x10x7 sandstone with all 60 notches.
Rotted remains of 24" fir @ N 79° E, 25'
50" fir stub, 12' high, @ S 14° E 51'
40' fir stump, crushed by 2 logs, @ S 37° W 7'
40' cut fir stump @ N 4° W 20'
The above measurements are to the centers.
No axe work or scribbing visible.

Placed Alum log on Huffman Peak trail, which is approx 350' east of corner.

102266

State of Washington
DEPARTMENT OF NATURAL RESOURCES
BUREAU OF SURVEYS AND MAPS
LAND CORNER RECORD

32	33
5	4

Skamania County

T 5 N, R 5 E, W.M.

Corner Code No. A-9

Segregated Surveys:
Name: n/a

Corner Number: n/a

1. History of Corner Establishment and Subsequent Restoration:

Originally established in 1909 by GLO surveyor C. Frank Rhodes with a notched stone and 4 dead BTs.

No subsequent restoration found.

2. Description of Evidence Found:

Original stone with proper notches.
50" fir stub BT, 12 feet high, at S14E 51 feet.
40" fir stump BT, crushed by 2 windfalls, at S37W 7 feet.
40" fir stump BT at S4W 20 feet.
Rotted remains of 24" fir at N79E 25 feet.

FILED FOR RECORD
SKAMANIA CO. WASH
BY JOHN LUND

DEC 11 11 PM '86
AUDITOR
GARY M. OLSON

3. Describe Monument, Accessories and Corollary Data to Perpetuate this Corner Location.
Diagram corner and indicate meridian and reference to map of record. Surveyor's Field Book No. 601.07, Page No. 54. Date of work June 12, 1986.

Replaced original stone with DNR aluminum monument with stamped cap.

See reverse side for corner diagram.

SURVEYOR'S CERTIFICATE

[Seal]

This corner record correctly represents work performed by me or under my direction in compliance with the provisions of Chapter 50, Laws of 1973.
Date: November 18, 1986.

Signature

21490
Certificate No.



AUDITOR'S CERTIFICATE

Filed for record this _____ day of _____ 19____ at _____ M.
In Book _____ of _____ at page _____ at the request
of Washington State Department of Natural Resources.

Registered _____
if _____

County Auditor