

102097

State of Washington  
DEPARTMENT OF NATURAL RESOURCES  
BUREAU OF SURVEYS AND MAPS  
LAND CORNER RECORD

1/4 10/15

Skamania County

Corner Code No. J-15

T 3 N, R 6 E, W.M.

Segregated Surveys:

Name: n/a

Corner Number: n/a

## 1. History of Corner Establishment and Subsequent Restoration:

Originally set by 1903 GLO survey.  
No restoration found.

## 2. Description of Evidence Found:

44" hemlock BT at N79W, 76.6 feet.  
Roots of SW BT at S11W, 74 feet.

FILED FOR RECORD  
STATE OF WASH  
BY *Sept 27, 1986*  
OCT 31 11 28 AM '86  
E. Muford  
AUDITOR  
GARY H. OLSON

## 3. Describe Monument, Accessories and Corollary Data to Perpetuate this Corner Location. Diagram corner and indicate meridian and reference to map of record. Surveyor's Field Book No. 600.27, Page No. 52. Date of work 10-28-86.

Set DNR aluminum monument. See sketch on back.

Washington Plane Coordinates: South Zone, Y 156,906.61, X 1,603,388.71 Third Order Accuracy.

Derived from: USC&amp;GS "Mowich" and USC&amp;GS "Lookout Mtn, RM #1".

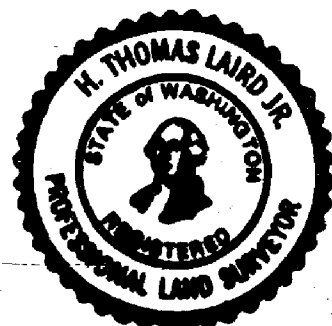
Pin Pointed on Photo No. \_\_\_\_\_, Date \_\_\_\_\_, Located at \_\_\_\_\_.

## SURVEYOR'S CERTIFICATE

[Seal]

This corner record correctly represents work performed by me or under my direction in compliance with the provisions of Chapter 50, Laws of 1973.  
Date: October 30, 1986.

Signature

*H. Thomas Laird Jr.*21490  
Certificate No.

## AUDITOR'S CERTIFICATE

Filed for record this 31 day of Oct. 19 86 at 11:28 A.M.  
In Book 3/6 of Monuments at page 10 at the request  
of Washington State Department of Natural Resources.

Registered E  
Indexed, Dir E  
Indirect \_\_\_\_\_  
Filmed \_\_\_\_\_  
Mailed \_\_\_\_\_

*Gary H. Olson*  
County Auditor

ELO Survey

599°50'W on true line

29.00 top of ascent

40.00 set post

24" Lonek S11°15'W 113.2 79.58'

44" Hemlock N78°15'W 116.2 76.56'

53.00 Creek, 10 1/2 ft wide 358 from 44"

1/4 corner 13/15 T3N R6E

Found 44" hemlock snag @ N79°W, 76.56'

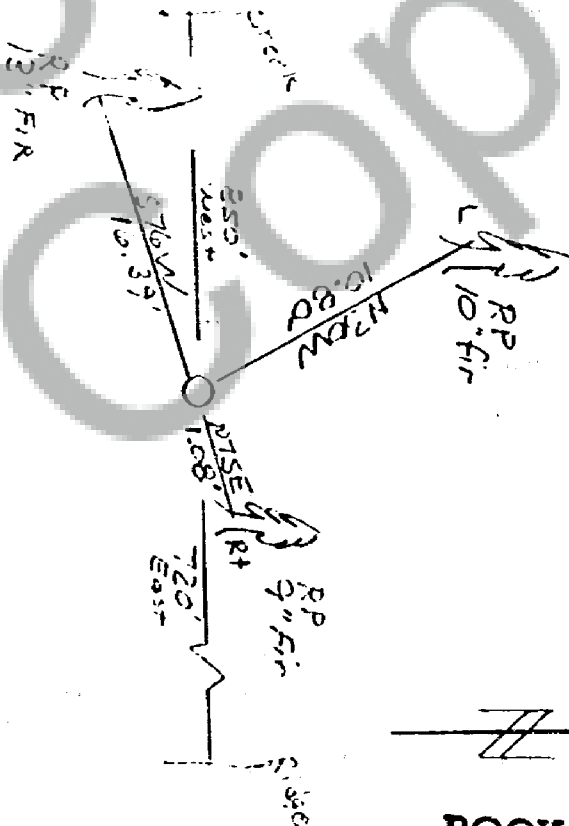
3 roots protruding from beneath  
2 large windfalls. The upper part  
one of these windfalls fell from  
the BT, knocking it down.

10-28-26

Laird  
Breisher

52

BOOK 3/6 PAGE 4/



Set stick 1/2 in from 44" hemlock BT  
and 1/2 in from 44" hemlock BT