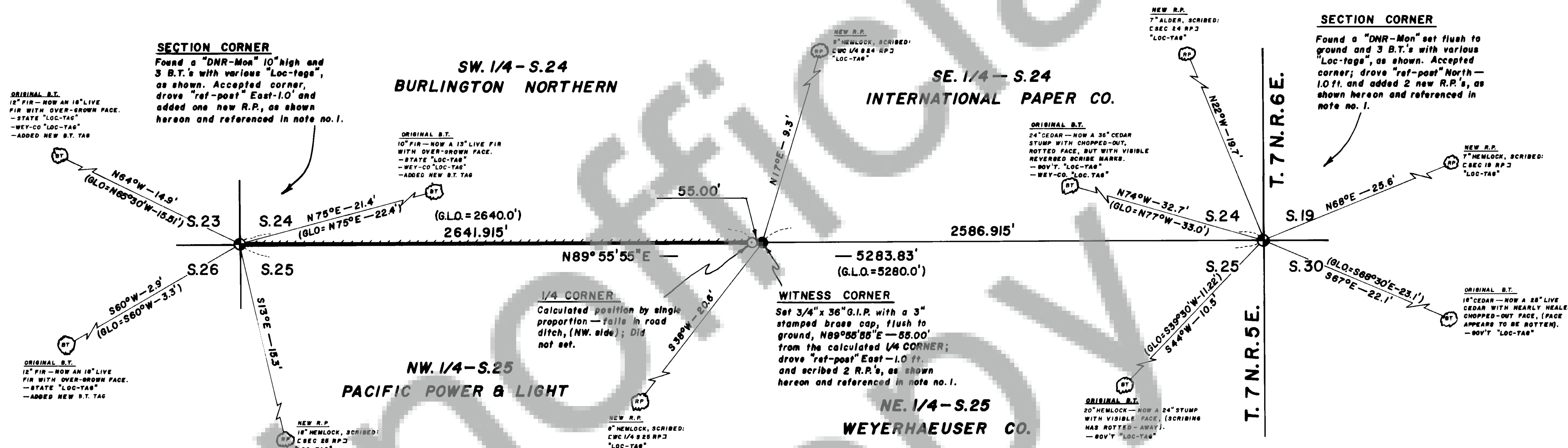


224
Page
2
Book

A DEPENDENT SURVEY of the Section line between
SECTIONS 24 & 25, T. 7 N. R. 5 E., W.M.
for the purpose of establishing the West 1/2 thereof, at
the request of Plum Creek Timber Company, Inc. (a
subsidiary of Burlington Northern Corp.).

situated within:
SKAMANIA COUNTY, WASHINGTON

BASIS of BEARING:
TRUE BEARINGS—determined
by PETTIJOHN ENGINEERING
on the North line of Sec. 25,
(see note no. 2, below)



LEGEND

1. = a found original corner, previously monumented.
2. = a new corner established during this survey.
3. = a corner calculated only—not set during this survey.
4. () = record G.L.O. bearing or distance.
5. [] = information scribed on a blazed face.
6. B.T. = an original G.L.O. Bearing Tree (scribed in 1900).
7. R.P. = a Reference Point (new bearing tree), with a scribed face and/or a "Loc.-tag".
8. G.L.O. = the General Land Office (U.S. Government).
9. G.I.P. = a Galvanized Iron Pipe.
10. D.N.R. = the Washington State Department of Natural Resources.
11. Wey-co = Weyerhaeuser Timber Company.
12. "Loc-tag" = a location tag established to reference a corner.
13. "DNR-mon" = a 3" stamped brass cap, set in a 4"x4" pier of concrete, by the D.N.R.
14. "ref-post" = a 5 1/2 foot steel fence post with "Loc-tag".
15. = a property line established during this survey with painted blazes.

NOTES

1. Refer to the "Land Corner Record" forms, for additional corner information, filed for record with this survey, in the County of Skamania, State of Washington.
2. Refer to the map of Section 25, T. 7 N. R. 5 E., by PETTIJOHN ENGINEERING in 1957, for Pacific Power & Light Co., on file with the Dept. of Surveys and Maps in Olympia, Washington, under file no. F.C.4-7-5E.
3. All measurements shown to the R.P.'s are taken to a nail at the bottom of the scribed face.

AUDITOR'S CERTIFICATE

Filed for record this 11th day of FEBRUARY,
1986, at 11:05 A.M., in BOOK 2 of SURVEYS,
at PAGE 224, at the request of HAMPSTUR
CORPORATION.

COUNTY AUDITOR

DEPUTY AUDITOR

SURVEYOR'S CERTIFICATE

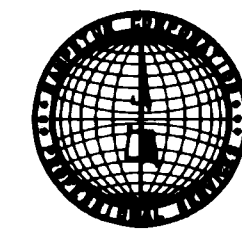
This map correctly represents a survey made by me or
under my direction, in conformance with the requirements
of the "SURVEY RECORDING ACT" of 1973, at the
request of PLUM CREEK TIMBER COMPANY, INC. in the
month of December of 1985.

Calvin R. Hampton
Professional Land Surveyor
WA. certificate no. 18,087

Jan. 17, 1986
Date signed



HAMPSTUR CORPORATION



P.O. Box 368
Kelso, WA. 98626
(206) 423-8166

Calculated by: C. J. Hampton
Checked by: A. D. Gollersrud
Drawn by: C. J. Hampton
Date: January 17, 1986
Field Book no. PS-020
Agreement no. 570-5.285-001
HAMPSTUR Job no. 86-602
Sheet no. one of one