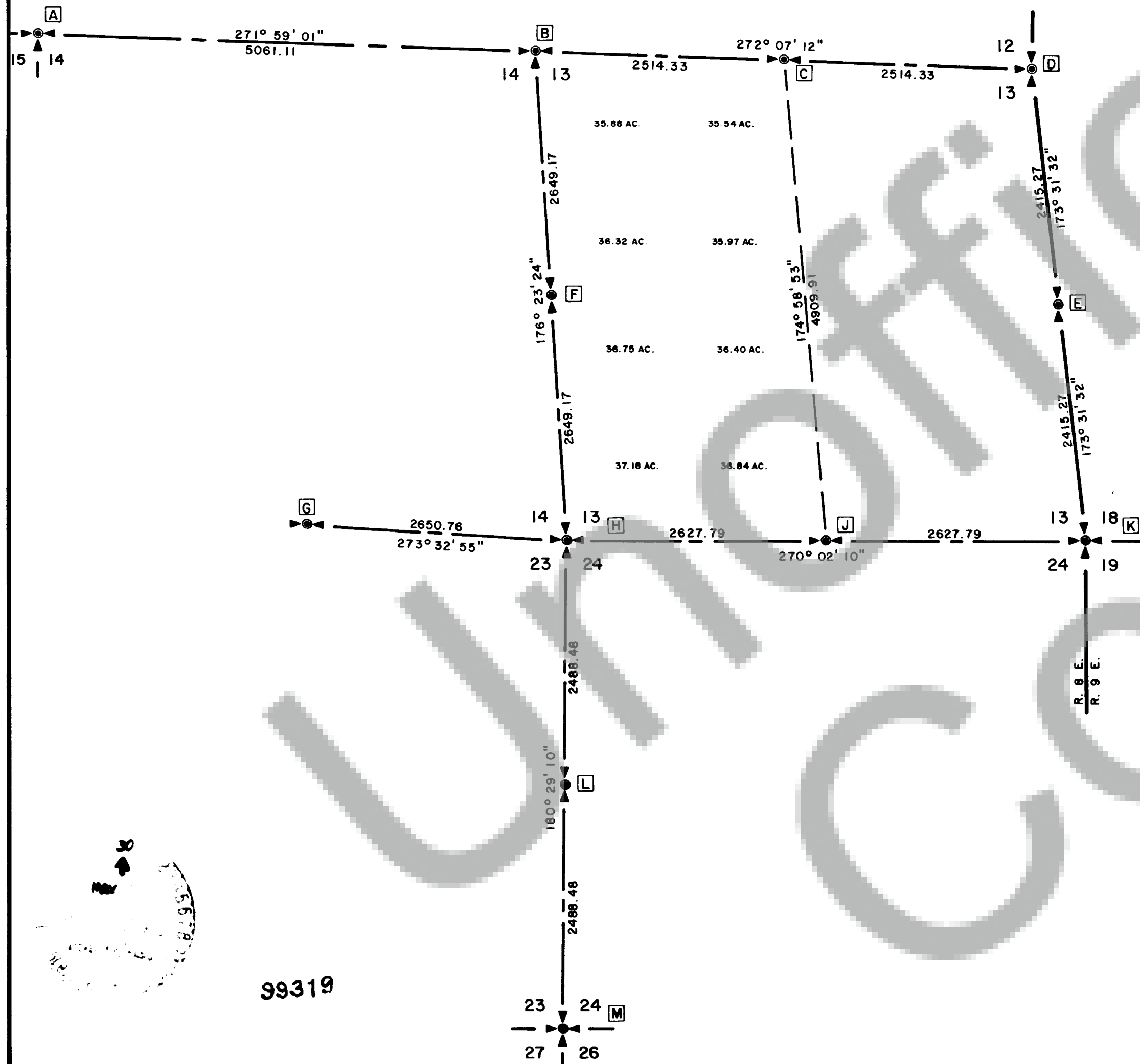


99319

178
Page
Surveys
2
Book



[A] FD: 4"X4" DNR CONC. MON. SET IN 1968 FROM ORIGINAL EVIDENCE. HELD FOR CORNER. 40" FIR BT STUMP WITH SCRIBE AT S70W 11.5'. 50" FIR BT WITH SCRIBE AT S37E 27.5'. THIS CORNER APPEARS ON THE FOLLOWING RECORDED SURVEYS: VOL. 1 P. 225, VOL. 2 PP. 85-88 AND VOL. 2 P. 88. 3 RP'S: 13" SCRIBED FIR AT S85W 23.15' 12" FIR AT N48W 10.84' 23 SCRIBED FIR AT N65E 15.72' F.B. 600.25 P. 55

[B] CALC. BY MODIFIED SINGLE-PROPORTION. FD: 4"X4" DNR CONC. MON. SET IN 1968 AT 308 26' 11" (S.A.Z.) 2.56' FROM CALCULATED POSITION. NOT ACCEPTED. RESET FD. DNR MONUMENT TO POSITION WHICH WAS DETERMINED FOR THIS SURVEY. 3 RP'S: 13" FIR AT N84W 21.33' 34" FIR AT S76E 27.90' 29" FIR AT S11W 26.95' F.B. 600.25A P. 25

[C] CALCULATED AT MID-POINT. FD: 4"X4" DNR CONC. MON. SET IN 1970 AT 303 36' 35" (S.A.Z.) 1.51' FROM CALCULATED POSITION. NOT ACCEPTED. RESET FD. DNR MONUMENT AT POSITION WHICH WAS DETERMINED FOR THIS SURVEY. 5 RP'S: 12" FIR AT N67W 11.61' 14" HEMLOCK AT N23E 13.21' 17" FIR AT S76E 5.57' 14" FIR AT S31E 13.83' 61" FIR AT S43W 25.96' F.B. 600.25A P. 29

[D] FD: 4"X4" DNR CONC. MON. IN POOR CONDITION WHICH WAS SET IN 1970 FROM ORIGINAL EVIDENCE. 12" FIR BT STUMP WITH AXE MARKS AT N30W 5.6'. 10" FIR BT STUMP WITH SCRIBE AT N60E 9.0'. 10" FIR BT STUMP WITH SCRIBE AT S70E 2.9'. 10" FIR BT STUMP WITH AXE MARKS AT S65W 1.8'. 1 1/2" RUSTED PIPE LAYING NEXT TO FOUND MONUMENT. THE GROUND IN THIS AREA IS UNSTABLE. AND THE 1970 DNR MONUMENT WAS FOUND TO HAVE MOVED APPROX. 6' SINCE BEING SET. THE 1970 COORDINATES WERE USED TO CALCULATE SUBDIVISION AND PROPORTIONS. REPLACED FOUND MONUMENT WITH DNR CONCRETE MONUMENT. 3 RP'S: 20" HEMLOCK AT S78W 13.30' 13" HEMLOCK AT N10E 4.71' 19" HEMLOCK AT S29E 22.74' F.B. 600.25 P. 56

[E] CALCULATED AT MID-POINT. SET DNR CONCRETE MONUMENT. 3 RP'S: 3" FIR AT N34W 15.67' 3" FIR AT N65E 15.19' 5" FIR AT S26W 8.86' F.B. 600.25A P. 33

[F] CALCULATED AT MID-POINT. FD: 4"X4" DNR CONC. MON. SET IN 1970 AT 85 30' 21" (S.A.Z.) 10.48'. NOT ACCEPTED. PIPE AND CAP SET BY LS #11888 AT N 4 E 21.88'. NOT ACCEPTED. RESET FD. DNR MONUMENT AT POSITION CALCULATED FOR THIS SURVEY. 3 RP'S: 12" FIR AT N45W 13.38' 15" FIR AT S43E 12.09' 11" FIR AT SOUTH 14.77' F.B. 600.25A P. 35

[G] ACCEPTED COR. FD: 3/4" PIPE & CAP SET BY OLSON ENG'R. AS SHOWN IN VOL. 1 OF SURVEYS P. 255. HELD FOR CORNER. PAROL EVIDENCE FROM MR. LOUIE LARSON, AN OLD TIME RESIDENT INDICATES THIS FENCE CORNER AS HAVING BEEN USED FOR 1/4 CORNER AS LONG AS HE REMEMBERS. IN 1988, FORESTER A. HOLMAN FD. AND USED FENCE CORNER AS 1/4 CORNER. IN 1911, C.E. LINN, COUNTY SURVEYOR, USED THIS CORNER. THIS CORNER ALSO APPEARS ON SURVEY IN VOLUME 2 P. 88. 2 RP'S: 13" FIR W/RR SPIKE AT N65W 15.64' 17" FIR STUMP W/RR SPIKE AT S40E 3.34' F.B. 600.25A P. 27

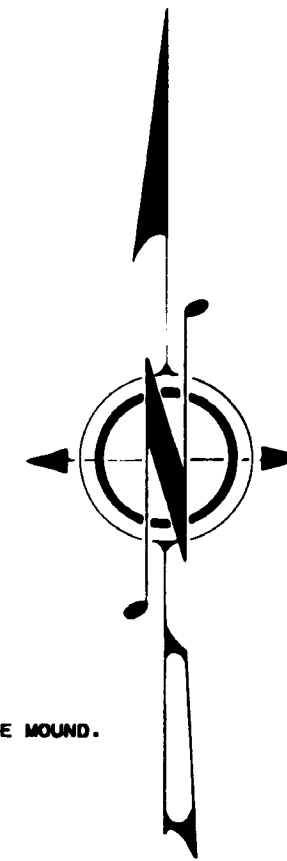
[H] CALCULATED BY DOUBLE-PROPORTION. FD: 4"X4" DNR CONC. MON. SET IN 1970 AT 91 34' 59" (S.A.Z.) 22.68'. NOT ACCEPTED. RESET FD. DNR MONUMENT AT POSITION DETERMINED FOR THIS SURVEY. 3 RP'S: 28" FIR AT S56W 10.48' 10" FIR AT N26W 20.84' 28" FIR AT N72E 14.29' F.B. 600.25A P. 23

[I] CALCULATED AT MID-POINT. FD: 4"X4" DNR CONC. MON. SET IN 1970 AT 88 30' 33" (S.A.Z.) 12.10'. NOT ACCEPTED. RESET FD. DNR MONUMENT AT POSITION WHICH WAS DETERMINED FOR THIS SURVEY. 4 RP'S: 7" FIR AT N82W 2.75' 9" FIR AT N18E 18.11' 9" FIR AT S73E 8.34' 9" FIR AT S17W 9.41' F.B. 600.25A P. 31

[J] FD: 4"X4" DNR CONC. MON. SET IN 1968 FROM ORIGINAL EVIDENCE. HELD FOR CORNER. 31" FIR BT STUMP WITH SCRIBE AT N31W 33.5'. 28" FIR BT WITH SCRIBE AT N50E 19.1'. 50" FIR BT STUMP WITH SCRIBE AT S51E 19.7'. 4 RP'S: 28" FIR AT N54W 24.2' 11" FIR W/SCRIBE AT S83E 37.2' 5" FIR W/SCRIBE AT S23W 17.2' 8" FIR W/SCRIBE AT N83W 63.10' F.B. 600.25 P. 57

[K] CALCULATED AT MID-POINT. FD: 2" IRON PIPE AT N62E 148.27'. NOT ACCEPTED THIS SURVEY. IN 1911, MR. LINN TIED 1/4 CORNER AT N27E 188' 1/2" FROM 1984 DNR POSITION. NO RECOVERY WAS MADE AT THIS TIME. IN 1938, THE BPA SHOWED A SCRIBED 30" FIR. NOT RECOVERED AT THIS TIME. SET DNR CONCRETE MONUMENT AT CALCULATED CORNER POSITION IN STONE MOUND. 3 RP'S: 19" CEDAR AT N2W 25.12' 32" FIR AT N43E 26.38' 18" CEDAR AT S55E 52.24' F.B. 600.25A P. 37

[L] FD: 4"X4" DNR CONC. MONUMENT IN POOR CONDITION SET IN 1968 FROM ORIGINAL EVIDENCE. HELD FOR CORNER. 2" RUSTED PIPE LAYING NEXT TO DNR MONUMENT. 20" ROTTEN FIR BT REMAINS AT N65W 12.0'. 20" ROTTEN FIR BT REMAINS AT S20W 8.0'. THIS CORNER ALSO APPEARS IN BOOK 1 OF SURVEYS P. 255 AND BOOK 2 OF SURVEYS P. 125. REPLACED FOUND DNR MONUMENT WITH NEW DNR CONCRETE MONUMENT. 4 RP'S: 13" FIR AT N48W 33.85' 27" FIR AT N48E 22.48' 7" FIR AT S58E 3.36' 18" FIR AT S88W 8.32' F.B. 600.25A P. 57



SCALE: 1" = 1000'
BASIS OF MERIDIAN:
1975 Olson Eng'r. survey as shown on survey recorded in Book 1 of Surveys pg. 54, Records of Skamania County.
True North: -0° 54' 33" at SW corner of Section 13.
Grid Factor: 0.9999434
DESCRIPTION OF STATE OWNERSHIP
West 1/2 of Sec. 13, T.3N., R.8E., W.M.

LEGEND

● Set - Indicates standard D.N.R. monument unless otherwise noted.

STANDARD D.N.R. MONUMENTS ARE:

2 3/8" O.D. aluminum alloy pipe with "break-away" plastic base.

3 1/4" diameter aluminum alloy cap stamped with proper corner identification, permanent, vertically oriented magnets are included in the monument base and cap.

STANDARD D.N.R. CAPS ARE:

3 1/4" diameter aluminum alloy disks with a vertically oriented magnet and stamped with proper corner identification set as noted.

D.N.R. concrete monuments are 3" diameter with brass cap stamped with proper corner identification.

D.N.R. iron pipes are 1" diameter with brass cap stamped with proper corner identification.

AUDITOR'S CERTIFICATE

Filed for record this 30 day of May, 19 85 at 2:30 P. M. in Book 2 of Surveys at page 178 at the request of the Washington State Department of Natural Resources.
99319
Auditor's File Number
Larry M. Olson
Skamania County Auditor

SURVEYOR'S CERTIFICATE

This map correctly represents a survey made by me or under my direction in conformance with the requirements of the Survey Recording Act at the request of the Department of Natural Resources in March 27, 19 85.
H. Thomas Laird Jr.
Certificate Number 21490
H. Thomas Laird Jr., P.L.S.



A SURVEY IN

SECTION 13 TOWNSHIP 3 NORTH, RANGE 8 East, W.M.

SURVEYED BY:
Tom Laird, P.L.S.
DRAWN BY:
B. Erik Nedergard

STATE OF WASHINGTON
DEPARTMENT OF NATURAL RESOURCES

CHECKED BY:
Larry J. Holt
DATE:
15 January 1985