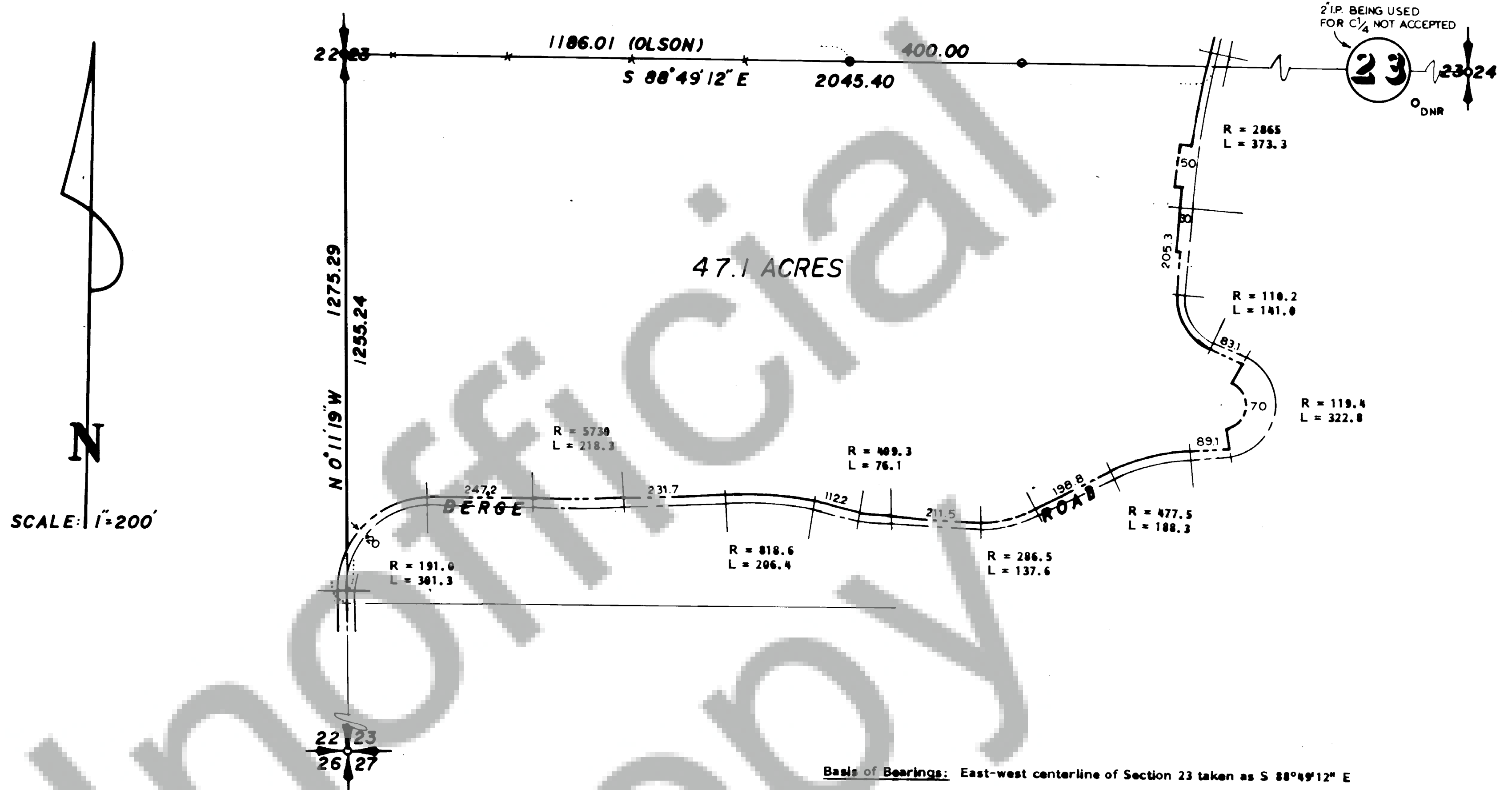


SURVEY IN PART SW<sup>1</sup>/<sub>4</sub> SECTION 23, T.3N, R.8E, W.M.

Basis of Bearings: East-west centerline of Section 23 taken as S 88° 49' 12" E

## Legend:

- Found corner set or recovered by Olson Engineering

## Notes:

Berge Road is 40 feet in width or as shown.

East-west centerline derived from old E<sub>1</sub> corner. New DNR monument bearing S 62° 47' 36" W 148.27 feet from old corner not used for centerline.



## AUDITOR'S CERTIFICATE

Filed for record this 16th day of JANUARY, 1985  
at 11:50 AM in Book 2 of Surveys at Page 168 at the  
request of Trantow Surveying

*H. Olson, Secy. of Dist. Rep.*

## SURVEYOR'S CERTIFICATE

This map correctly represents a survey made by me or  
under my direction in conformance with the requirements  
of the Survey Recording Act at the request of  
JACK BERGE in August, 1984



*Terry Trantow*  
LS 15673

T. N. TRANTOW SURVEYING, P. L. S.  
P. O. Box 287, Bingen, Washington 98605  
(509) 483-3111

**SURVEY FOR**  
**LOUIS BERGE**

SKAMANIA COUNTY, WA.

Surveyed by *P.P. A.J.* Date *7-84* Scale *1" = 200'*  
Drawn by *T.T.* Date *10-84* Sheet *1 of 1*  
Checked by *Q/R* Date *10-84* Project No. *84176*