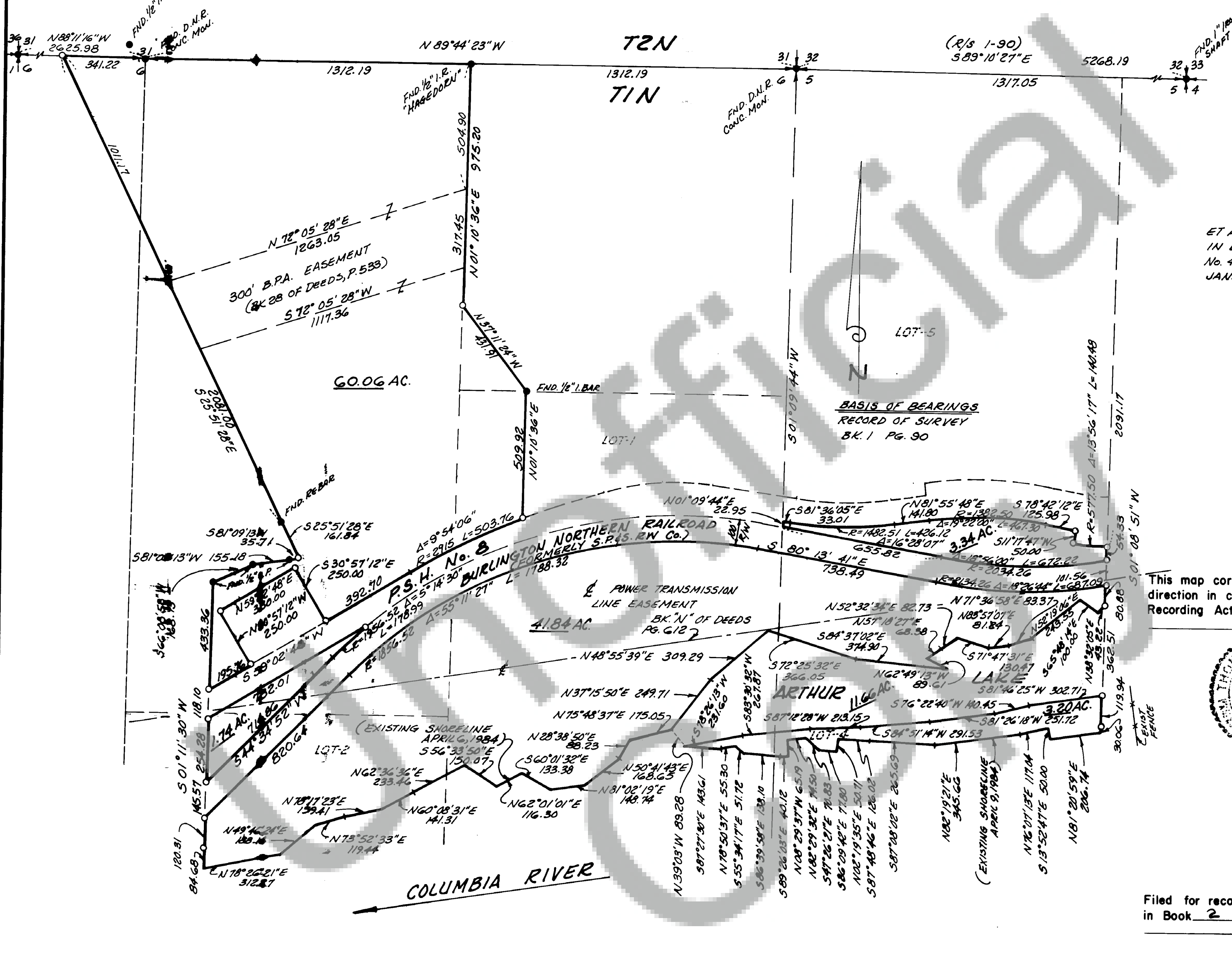


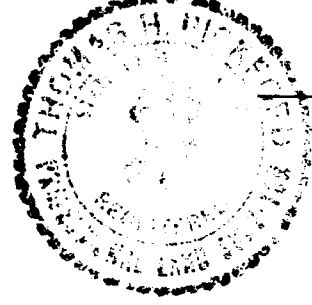
152
Page
Surveys
2
Book

BOUNDARY SURVEY OF A PORTION OF SECTIONS 5 & 6, T1N, R6E, W.M. SKAMANIA COUNTY, WASHINGTON



LEGAL DESCRIPTION
 CONTRACT OF SALE BETWEEN LEONIE VIAL MACKENZIE, ET AL, AND ROBERT M. SCHAEFER, ET UX, RECORDED MAY 13, 1966 IN BOOK 55, PAGE 481, AS MODIFIED BY JUDGEMENT IN CASE No. 4879-C, SUPERIOR COURT OF SKAMANIA COUNTY, DATED JAN. 17, 1974.

SURVEYOR'S CERTIFICATE
 This map correctly represents a survey made by me or under my direction in conformance with the requirements of the Survey Recording Act at the request of ROBERT M. SCHAEFER in APRIL 19 84



Thomas H. Bickford
 Professional Land Surveyor

AUDITOR'S CERTIFICATE
 Filed for record this 21ST day of JUNE 1984 at 12:45 A.M. in Book 2 of SUMMS at Page 152 at the request of BICKFORD ASSOCIATES

J.M. Olson by d. New, Dep
 Deputy County Auditor

LEGEND
 ● - FOUND MONUMENTATION AS INDICATED
 ○ - SET 1/2" RE-ROD W/ PLASTIC I.D. CAP

NOTE: EXISTING SHORELINES SHOWN ARE AT ELEVATION 100 COLUMBIA RIVER DATUM. THE OUTER LIMITS OF THE SECOND CLASS TIDELANDS ARE AT ELEVATION 0.0 CRD., WHICH IS THE LINE OF NAVIGATION.

BICKFORD ASSOCIATES
 510 W. MILL PLAIN BLVD. SUITE 1A
 VANCOUVER, WASHINGTON 98660
 PHONE 1-(206)-693-1361

SCALE: 1" = 300'
 DATE: 4/84
 DRAWN BY: D.L.
 CHECKED BY: T.H.B.
 JOB No. 1519
 SHEET 1 OF 1