

97452

SURVEY

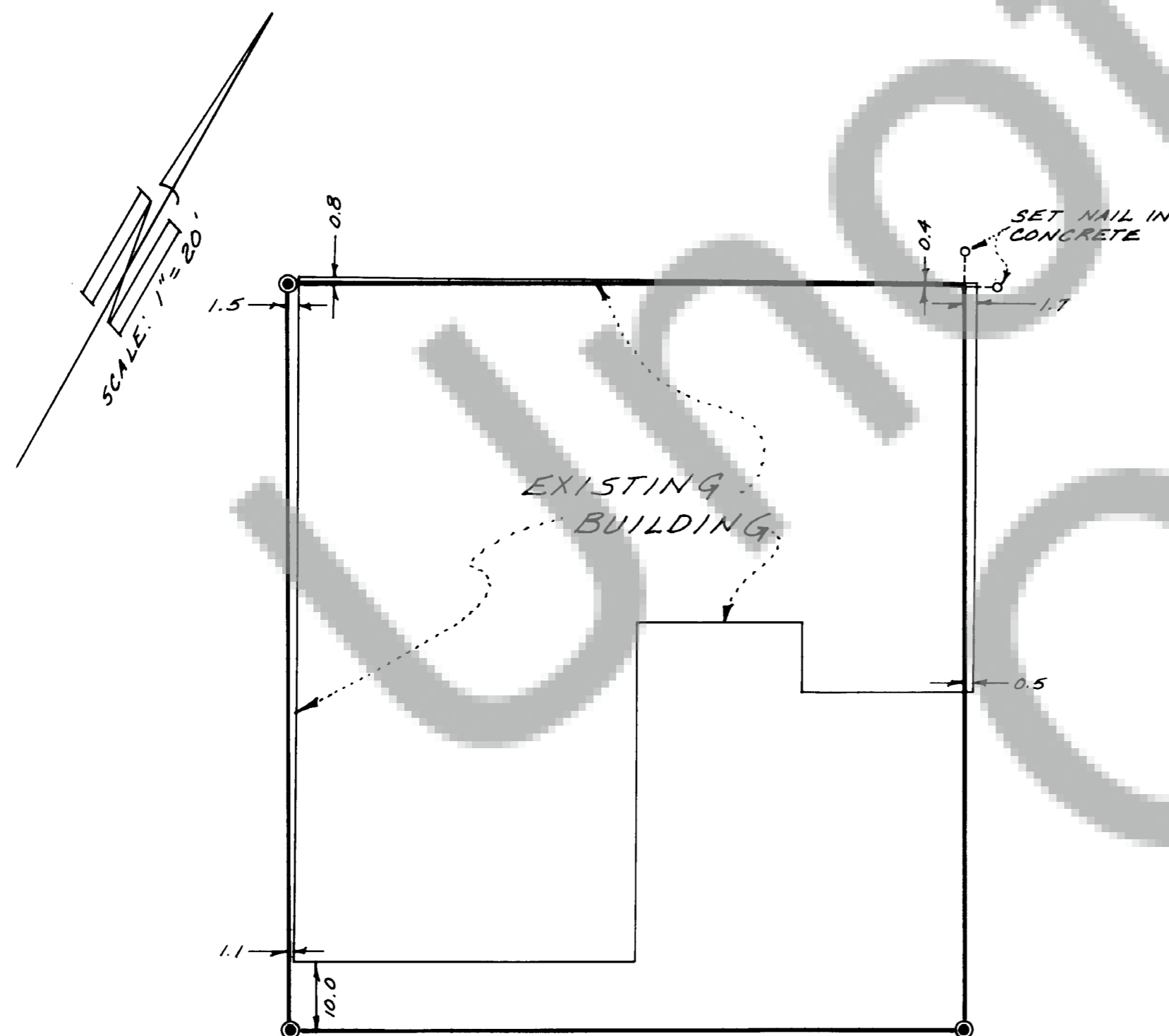
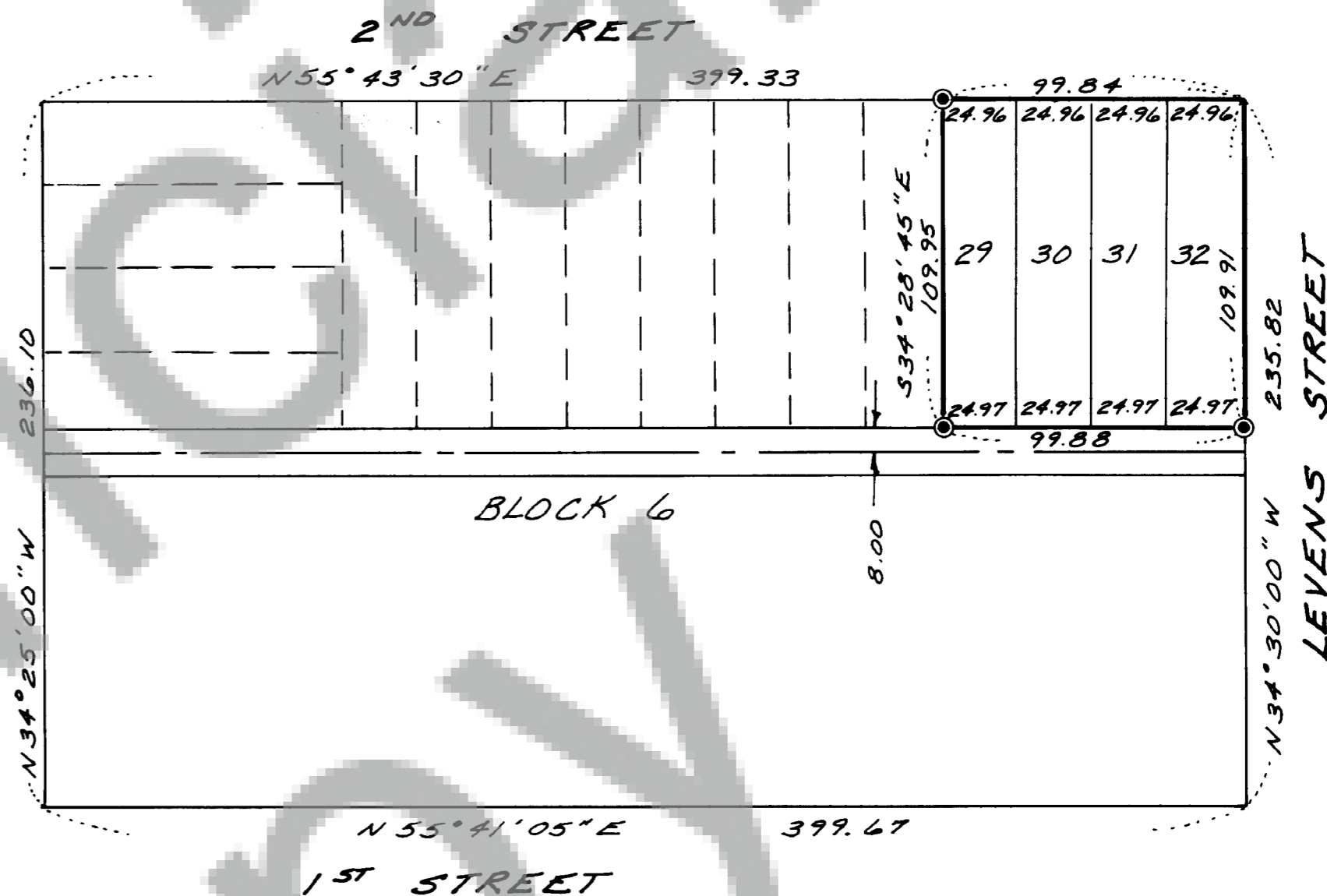
OF

LOTS 29,30,31 & 32 BLOCK 6 PLAT OF
STEVENSON (BOOK A, PAGE 11) IN
THE NE 1/4 SECTION 1, T.2N., R.7E., W.M.,
SKAMANIA COUNTY, WASHINGTON

NOTE: THE CONCRETE CURBS ALONG
FIRST STREET, RUSSELL AVE.,
SECOND STREET, AND LEVENS
STREET WERE USED TO DETERMINE
THE LOCATION OF BLOCK 6.

BASIS OF BEARING IS PLAT
OF STEVENSON BOOK A, PAGE 11.
SCALE: 1"=20'

RUSSELL AVE.



● INDICATES 1/2" IRON ROD WITH
PLASTIC CAP SET

NOTE: MINISTER AND GLAESER SURVEYING, INC. MAKES NO WARRANTIES
AS TO MATTERS OF UNWRITTEN TITLE SUCH AS ADVERSE
POSSESSION, ACQUIESCENCE, ESTOPPEL, ETC.

SURVEYOR'S CERTIFICATE

This map correctly represents a survey made by me or under my direction in
conformance with the requirements of the Survey Recording Act at the
request of RAY COCHRAN
in APRIL 19 84.

97452

Robert W. Glaeser
ROBERT W. GLAESER
PROFESSIONAL LAND
SURVEYOR - LS NO. 15024

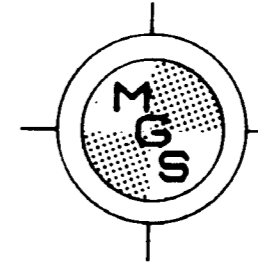
AUDITOR'S CERTIFICATE

Filed for record this 17 day of April 19 84 at 2 P.M.
in Book 2 of Survey at page 143 at the request of
Minister and Glaeser Surveying, Inc.

E. M. Mendenhall
Deputy County Auditor



SCALE: _____
JOB NO. 84-26
DATE: 4-5-84
CALC BY: RWG
DRAWN BY: RJH
CHECKED BY: _____
SHEET 1 OF 1



MINISTER-GLAESER
SURVEYING INC.
2515 EAST EVERGREEN BLVD.
VANCOUVER, WA. 98661
(206) 694-3313