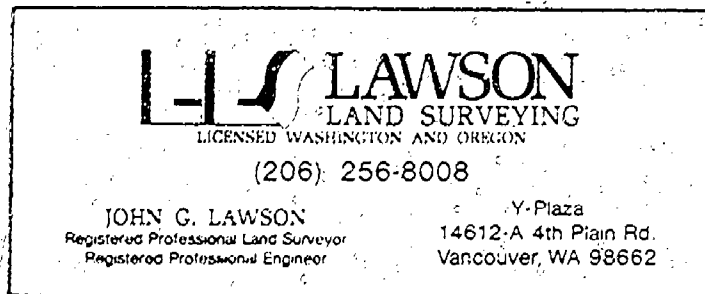


95079

4/7/2 PAGE 4



LAND CORNER RECORD

T 4 N, R 7½ E, W.M.; Skamania
CountyCorner Code Number: V-23Page 1 of 1

Name: One-quarter corner common to Sections 25 & 36, T4N - R7½E, WM Corner
DLC, HES Mining Claim, Indian Allotment, Federal Reserve, Townsite Number V-23

1. History of Corner Establishment and Subsequent Restoration; description of Evidence Found:

The 1938 Skamania County Road Project No. 10, Panther Creek Bridge, shows a Brass Monument in the center of the USFS Road. I search extensively in 1974 and could find no sign of the monument. However, there was an old USFS tag on a hardwood tree to the West. I used the bearing and distance to set a 3/4-inch Iron Pipe. To check the location of the corner, we traversed over and tied the abutments of the Panther Creek Bridge. This tie checked within a couple of feet of the USFS tag. The USFS tag is now missing, so I cannot accurately quote the information on the tag.

2. Describe Monument, Accessories and Corollary Data to Perpetuate this Corner Location. Diagram corner and indicate meridian and reference to map of record.

LAWSON LAND SURVEYING Job # 28 - 82 - 250407½; Date of Work: August, 1982

A 3/4-inch Iron Pipe is 6 inches below the road surface. During the summer of 1982, Skamania County set a concrete monument with a monument box to preserve this corner.

28-inch Douglas Fir, North 22° East, 31.1 feet, scribed "S 25 S½ BT"

16-inch Douglas Fir, South 48° West, 41.3 feet, scribed "S 36 N½ BT"

Washington Plane Coordinates: _____ Zone, Y _____, X _____

Order of Accuracy. Derived from: _____

Pin Pointed on Photo No. _____ Date _____ Located at _____

SURVEYOR'S CERTIFICATE

This corner record correctly represents work performed by me or under my direction in compliance with the provisions of Chapter 50, Laws of 1973.

Signature John G. Lawson Date Aug 5, 1982
 Certificate Number 11989



AUDITOR'S CERTIFICATE

Filed for record this 3RD day of Dec, 1982 at 5:00 P.M.
 In book 4/7/2 of MONUMENTS at Page 4 at the request
 of LAWSON LAND SURVEYING

95079

W.M. Olson by ad. Davis
 County Auditor