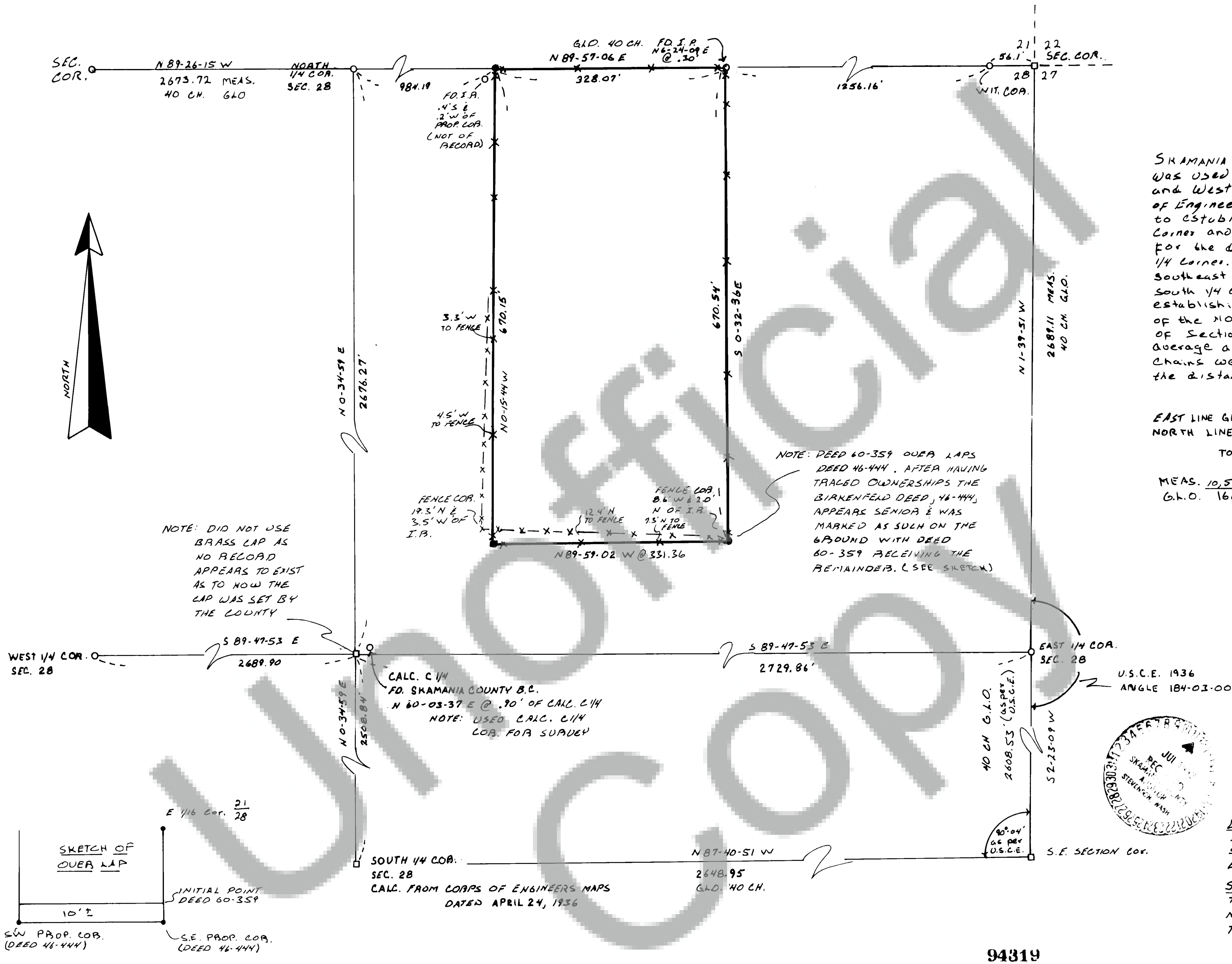


68
Page
Surveys
2
Book



SKAMANIA County Survey Control was used to establish the East and West 1/4 corners. The Corps of Engineers map was then used to establish the Southeast Section Corner and also the angle to turn for the direction of the South 1/4 Corner. The distance from the Southeast Section Corner to the South 1/4 Corner was determined by establishing a proportional average of the North line and the East line of Section 28. The proportional average and the G.L.O. call of 40 Chains were then combined for the distance.

EAST LINE G.L.O. 80 CH MEAS. 5299.64
 NORTH LINE G.L.O. 80 CH MEAS. 5298.162
 TOTALS 160 CH. MEAS. 10,597.802
 THEREFORE
 MEAS. 10,597.80 = $\frac{K}{40}$
 G.L.O. 160 = $\frac{K}{40}$ DIST = 2648.95



BASIS OF BEARING
 SKAMANIA COUNTY CONTROL SURVEY, L.P.P. 74-26, BY OLSON ENGINEERING

SURVEY LOCATION & DESCRIPTION
 THE E 1/2 OF THE NE 1/4 OF THE N.W. 1/4 OF THE N.E. 1/4, SEC. 28 T.3N., R. 8 E., W.M.

SURVEYOR'S CERTIFICATE
 THIS MAP CORRECTLY REPRESENTS A SURVEY, MADE BY ME OR UNDER MY DIRECTION IN CONFORMANCE WITH THE REQUIREMENTS OF THE SURVEY RECORDING ACT AT THE REQUEST OF BIRKENFELD TRUST
JUNE 19 82
 (SIGNED AND SEALED) Roy O. Gaylord
 CERTIFICATE NUMBER 18731

SURVEY FOR
BIRKENFELD TRUST
 CARSON WASH.



AUDITOR'S CERTIFICATE
 FILED FOR RECORD THIS 18th DAY OF July
 1982 AT 9:10 AM IN BOOK 2 OF Subdiv
 AT PAGE 68 AT THE REQUEST OF Steven C. Wash
 (SIGNED) Roy O. Gaylord COUNTY CLERK

LEGEND
 ● SET 5/8" x 30" I.R.
 □ CALC. - NOT SET
 ○ FOUND MON. OF RECORD
 * POSTED W/FIBERGLASS POST
 X-X-X FENCE

TERBA SURVEYING
 DATE: JUNE 1982
 SCALE: 1"=100'
 PROJECT: 8211
 P.O. BOX 617, HOOD RIVER ORE. 97031
 (503) 386-4531