

Book 2 Surveys Page 40

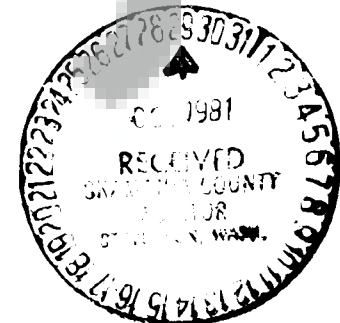
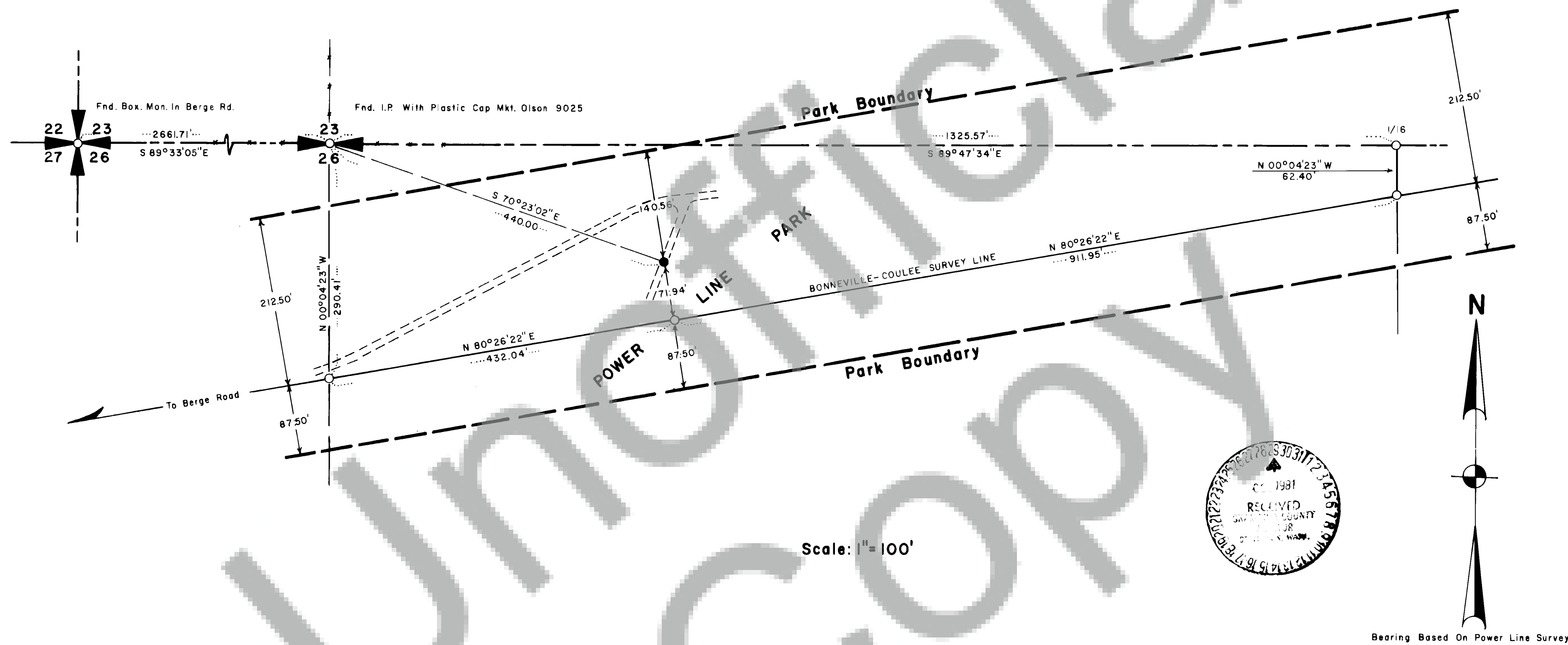
93261

93261

SURVEY FOR
JERRY HOLMES
OF

BOOK 2 P 40

A Portion Of The "Skamania County Power Line Park" Located In Section 26, Township 3 North, Range 8 East Of The Willamette Meridian.



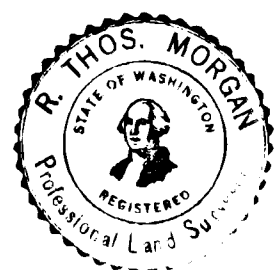
SURVEYOR'S CERTIFICATE

This map correctly represents a survey made by me or under my direction in conformance with the requirements of the Survey Recording Act at the request of Jerry Holmes in December, 1978.

- Indicates Accident Site Between 2,16" Douglas Firs With Cable Marks
- Indicates Calculated Point

AUDITOR'S CERTIFICATE, 1981

Filed for record this 29th day of OCT., 1979 at 10:10 AM. in book 2 of Survey at page 40 at the request of Jerry Holmes.



R. Thos. Morgan
Surveyor—License 12334

B. Babcock
County Auditor