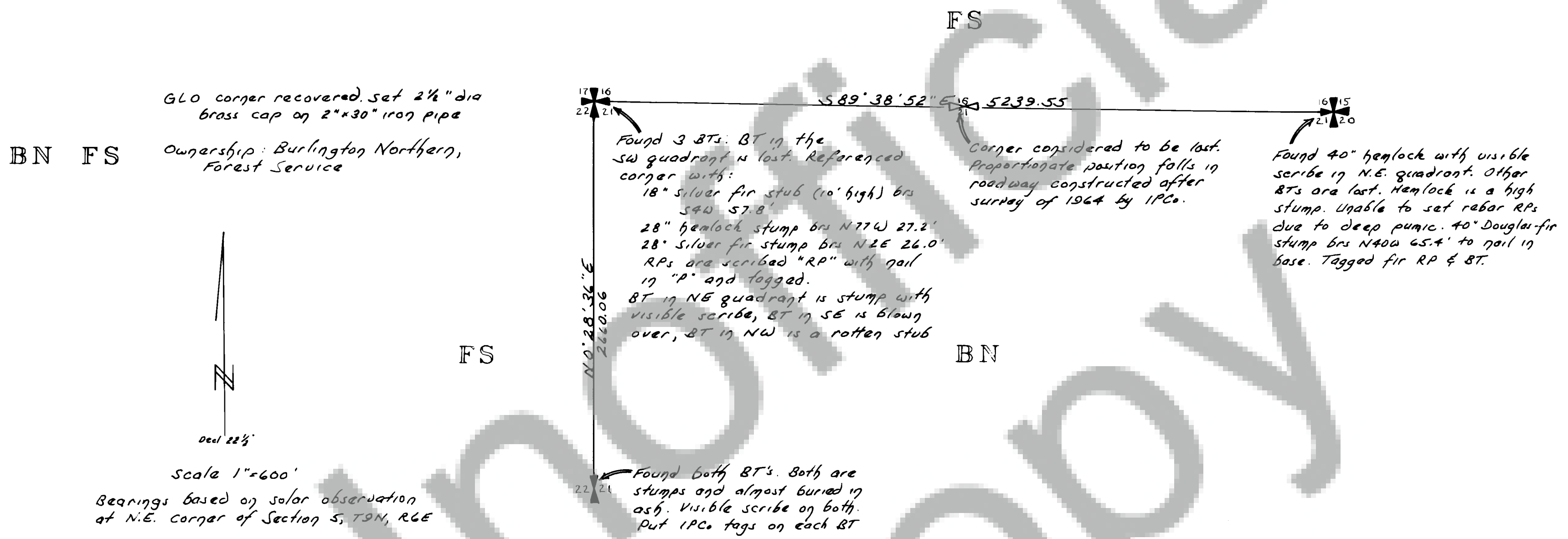
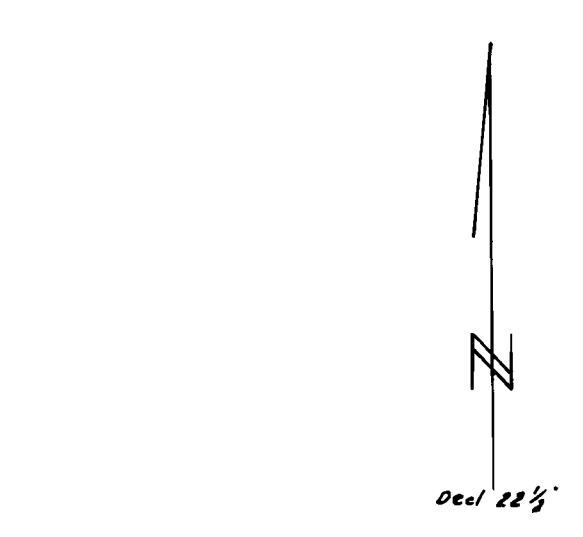


Record of Survey for the U.S. Forest Service and International Paper Company of Section 21, T 9 N, R 6 E, W. M., Skamania County, Washington



GLO corner recovered. Set 2 1/2" dia brass cap on 2"x30" iron pipe

Ownership: Burlington Northern, Forest Service



Scale 1"=600'

Bearings based on solar observation at N.E. corner of Section 5, T 9 N, R 6 E

Found 3 BT's. BT in the SW quadrant is lost. Referenced corner with:

- 18" silver fir stub (10' high) brs S 40 57.8'
- 28" hemlock stump brs N 77 W 27.2'
- 28" silver fir stump brs N 2 E 26.0'

RP's are scribed "RP" with nail in "P" and tagged.

BT in NE quadrant is stump with visible scribe, BT in SE is blown over, BT in NW is a rotten stub

Found both BT's. Both are stumps and almost buried in ash. Visible scribe on both. Put IPCo tags on each BT

Corner considered to be lost. Proportional position falls in roadway constructed after survey of 1964 by IPCo.

Found 40" hemlock with visible scribe in N.E. quadrant. Other BT's are lost. Hemlock is a high stump. Unable to set rebar RP's due to deep pumic. 40" Douglas-fir stump brs N 40 W 65.4' to nail in base. Tagged fir RP & BT.

AUDITOR'S CERTIFICATE

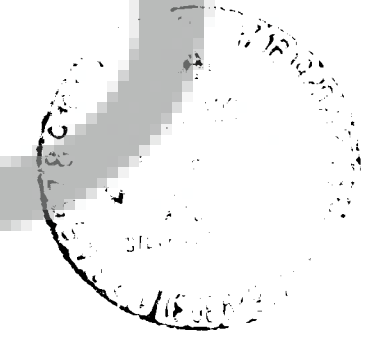
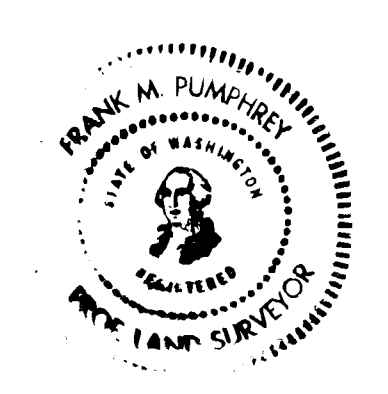
Filed for record this 15<sup>th</sup> day of Sept. 1981 at 1:30 P.M. in book 2 of Surveys at page 27 of the request of Frank Pumphrey

B. Babcock  
Deputy Auditor

SURVEYOR'S CERTIFICATE

This map correctly represents a survey made under my direction in conformance with the Survey Recording Act of the request of International Paper and the U.S. Forest Service in June, 1981

Frank M. Pumphrey  
Frank M. Pumphrey  
L.S. 15269



Book 2 Surveys Page 27