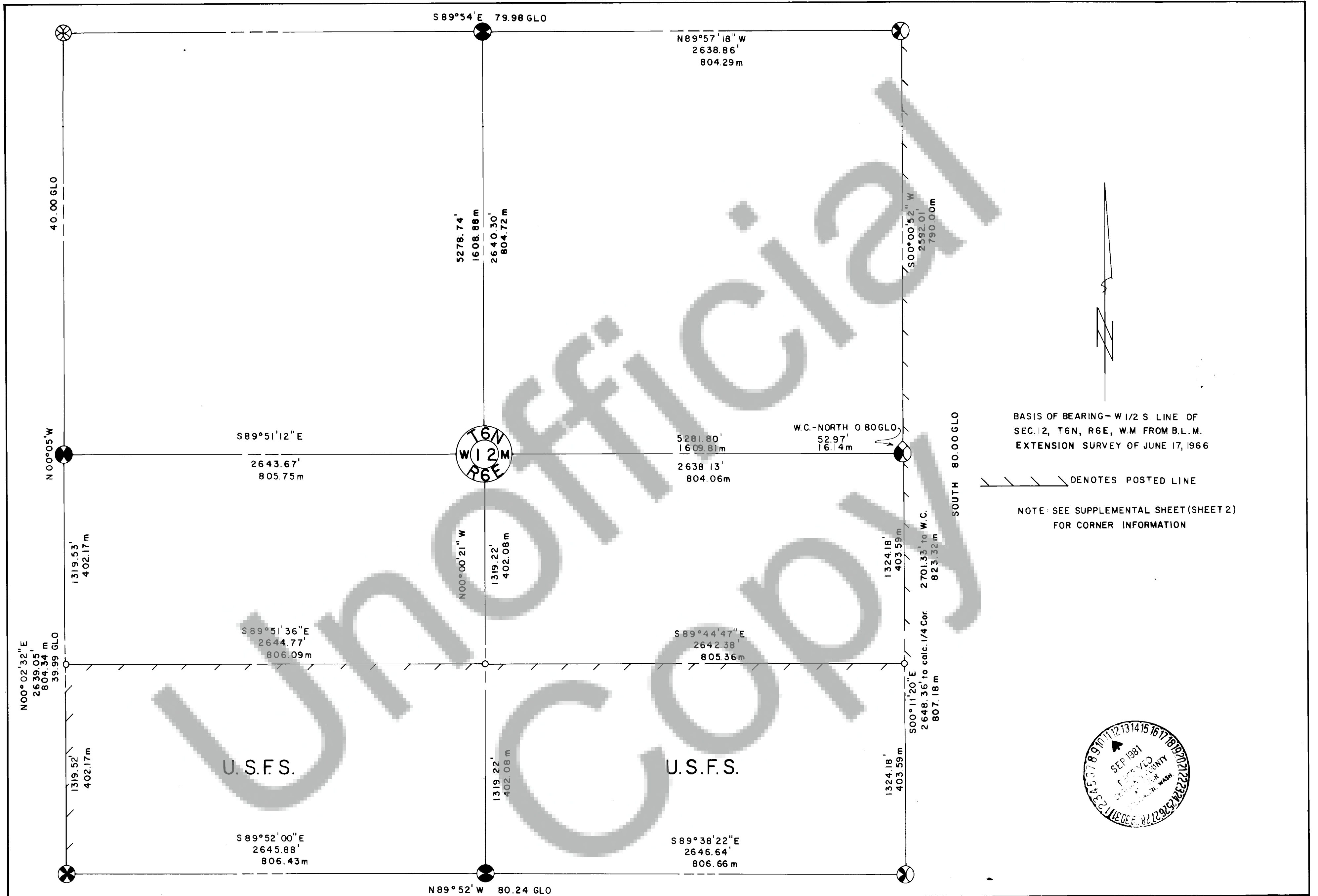


93062

BOOK 2 PAGE 25



<p>CERTIFICATE NO. _____</p> <p>AUDITOR'S CERTIFICATE</p> <p>FILED FOR RECORD THIS <u>11th</u> DAY OF <u>Sept</u>, 19<u>81</u> AT <u>2:00</u> P.M. IN BOOK <u>2</u> OF <u>SURVEYS</u> AT PAGE <u>25</u> AT THE REQUEST OF MIKE HOBBS & ASSOCIATES, INC.</p> <p><u>On Messenger</u> COUNTY AUDITOR</p>		<p>SURVEYOR'S CERTIFICATE</p> <p>THIS MAP CORRECTLY REPRESENTS A SURVEY MADE BY ME OR UNDER MY DIRECTION IN CONFORMANCE WITH THE REQUIREMENTS OF THE SURVEY RECORDING ACT AT THE REQUEST OF U.S. FOREST SERVICE, DEPT. OF AGRICULTURE IN JUNE, 1981</p> <p><u>Michael A. Hobbs</u> LICENSE NO. 15652</p>	<p>MIKE HOBBS & ASSOCIATES, INC. 475 NW CHEHALIS AVENUE P.O. BOX 149 (206) 748-8803 CHEHALIS, WASHINGTON</p> <table border="1"><tr><td>DRN <u>PB</u></td><td>DATE 7-29-81</td></tr><tr><td>CHK'D <u>Stutley</u></td><td>JOB NO. 81-51</td></tr><tr><td>SCALE 1" = 400'</td><td>SHEET 1 OF 2</td></tr></table>	DRN <u>PB</u>	DATE 7-29-81	CHK'D <u>Stutley</u>	JOB NO. 81-51	SCALE 1" = 400'	SHEET 1 OF 2	
DRN <u>PB</u>	DATE 7-29-81									
CHK'D <u>Stutley</u>	JOB NO. 81-51									
SCALE 1" = 400'	SHEET 1 OF 2									

SECTION 12, T6N, R6E, W.M.
SUPPLEMENTAL SHEET

N.W. Corner, Section 12

No corner monument found, destroyed by road construction.
Found 2 O.B.T.'s

Set 2 1/2" X 30" pipe 26" in ground with 2 1/2" brass cap marked:
16N R6E

S2 S1
1981
LS 15652

Scribed New B.T.'s

25" Fir N07°W 16.67'
Scribed T6N R6E S2 BT 54-3 & 54-3 signs

Witness object

3' X 2' X 2' stone W/PK nail in top
S25 1/2° W 15.52'

Field Hook #151, page 9

West Quarter Corner, Section 12

Found G.L.O. Monument
2 O.B.T.'s

South One-Sixteenth Corner, Section 12

No Corner Monument Found
No Bearing Trees Found

Set 2 1/2" X 30" pipe with brass cap marked:
T6N R6E

S 1/16
S11 S12
1981
LS 15652

Scribed New B.T.'s

29" Fir N60°E 18.60'
Scribed S1/16 S12 BT 54-3 & 54-4 signs
36" Fir S31°E 46.29'
Scribed S1/16 S12 BT

Field Hook #151, page 13

S.W. Corner, Section 14

Found G.L.O. Monument
Found 6 B.T.'s

North Quarter Corner, Section 12

Found G.L.O. Monument
2 O.B.T.'s

Witness Corner #1 for Center, Section 12
No Corner Monument Found
No Bearing Trees Found

Set 2 1/2" X 30" pipe 26" in ground with 2 1/2" brass cap marked:
T6N R6E

WC
C 1/4
←C→
1981
LS 15652

Reference Monuments

Set 3/4" X 30" Rebar w/plastic cap LS 15652
N45°E 19.92' 1 notch in cap
S63°E 7.26' 2 notches in cap

Guard Stakes with appropriate signs attached behind Rebar Facing Corner 54-3 & 54-9 signs
Field Hook #151, page 16

Witness Corner #2 for Center, Section 12

No Corner Monument Found
No Bearing Trees Found

Set 2 1/2" X 30" pipe 26" in ground with 2 1/2" brass cap marked:
T6N R6E

WC
C 1/4
←C→
1981
LS 15652

Reference Monuments

Set 3/4" X 30" Rebar w/plastic cap LS 15652
N52°W 8.21' 4 notches in cap
S10°W 9.11' 3 notches in cap

Guard Stakes with appropriate signs attached behind Rebar Facing Corner 54-3 & 54-9 signs
Field Hook #151, page 17

Center Section One-Sixteenth Corner, Section 12

No Corner Monument Found
No Bearing Trees Found

Set 2 1/2" X 30" pipe with 2 3/4" brass cap marked:
T6N R6E

C
S1/16 S12
1981
LS 15652

Scribed New B.T.'s

23" Fir S23E 52.32' scribed CS1/16 S12 BT
38" Fir S53W 33.59' scribed CS1/16 S12 BT
54-3 & 54-4 signs
Field Hook #151, page 15

South Quarter Corner, Section 12

Found B.T.M. Monument
2 O.B.T.'s

N.E. Corner, Section 12

No Corner Monument Found, destroyed by slide
Found 2 O.B.T.'s

Set 2 1/2" X 30" pipe 26" in ground with 2 1/2" brass cap marked:
T6N R6E

S1
S12
1981
LS 15652

54-3 & 54-4 signs placed on B.T.'s

Field Hook #151, page 5

Witness Corner For East Quarter Corner, Section 12

Found B.T.M. Monument
Found 2 O.B.T.'s

South One-Sixteenth Corner, Section 12

No Corner Monument Found
No Bearing Trees Found

Set 2 1/2" X 30" pipe 26" in ground with 2 3/4" brass cap marked:
T6N R6E

S 1/16
S12
1981
LS 15652

Scribed New B.T.'s
27" Fir South 13.50' scribed S1/16 S12 BT
13" Fir N14W 12.82' scribed S1/16 S12 BT
Field Hook #151, page 14

S.E. Corner, Section 12

Found B.T.M. Monument
Found 2 O.B.T.'s

CERTIFICATE NO. _____

AUDITOR'S CERTIFICATE

FILED FOR RECORD THIS 11th DAY OF April, 1981 AT
COUNTY OF CHEHALIS, WASHINGTON
THE REQUEST OF MIKE HOBBS & ASSOCIATES, INC.

Michael H. Hobbs
COUNTY AUDITOR

SURVEYOR'S CERTIFICATE

THIS MAP CORRECTLY REPRESENTS A SURVEY MADE BY
ME OR UNDER MY DIRECTION IN CONFORMANCE WITH THE
REQUIREMENTS OF THE SURVEY RECORDING ACT AT THE
REQUEST OF U.S. FOREST SERVICE, DEPT. OF AGRICUL-
TURE, IN JUNE, 1981.

Michael H. Hobbs
LICENSE NO. 15652

MIKE HOBBS & ASSOCIATES, INC.
475 NW CHEHALIS AVENUE
P.O. BOX 149 (206) 748-8803
CHEHALIS, WASHINGTON

DRN FB DATE 7-29-81

CHK'D BY Job NO. 81-51

SCALE — SHEET 2 OF 2

