

# LAND CORNER RECORD

T. 6 N, R. 6 E, W.M. County SKAMANIA Corner Code No. G-23  
Segregated Surveys: Name: W.C. #1 TO CENTER SECTION 12 Corner No.: C 1/4 (WC)  
DLC, HES, Tract, Mining Claim, Indian Allotment, Federal Reserve, Townsite.

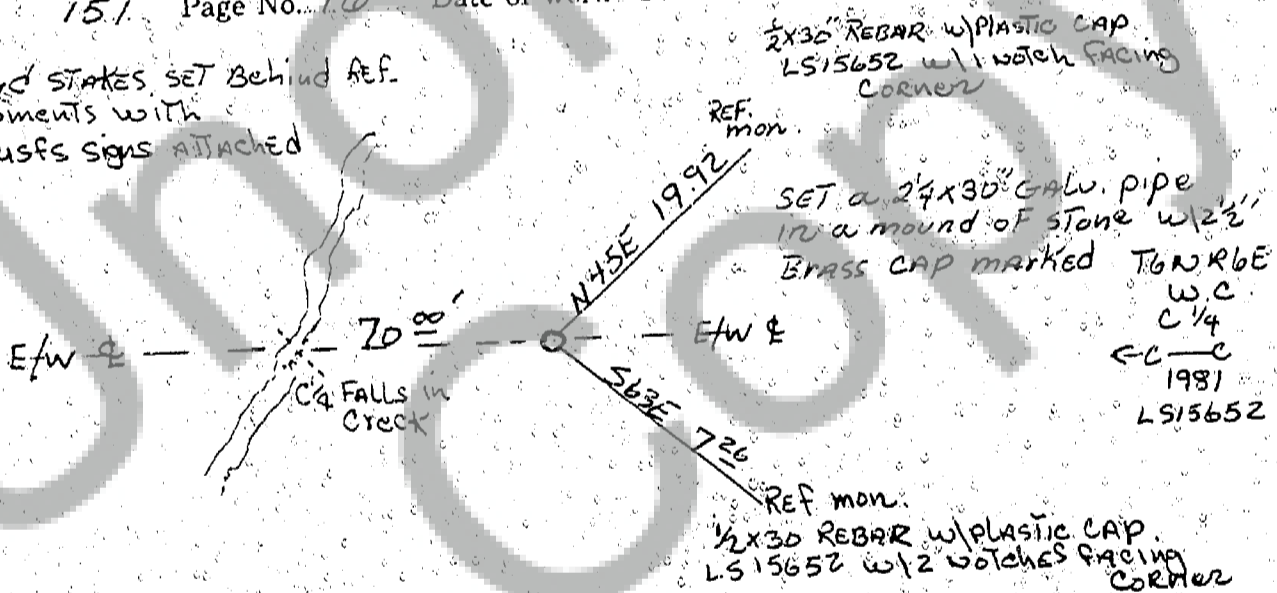
1. History of Corner Establishment and Subsequent Restoration:  
NONE

2. Description of Evidence Found:  
NONE



3. Describe Monument, Accessories and Corollary Data to Perpetuate this Corner Location. Diagram corner and indicate meridian and reference to map of record. Surveyor's Field Book No. 151 Page No. 16 Date of work 8-5-81

Guard stakes set behind ref. monuments with 54-3 usfs signs attached 54-4



Washington Plane Coordinates: Zone, Y  
Order Accuracy: Derived From:  
Pin Pointed on Photo No. Date Located at

### SURVEYOR'S CERTIFICATE

This corner record correctly represents work performed by me or under my direction in compliance with the provisions of Chapter 50, Laws of 1973. Date August 10, 1981

Signature: Michael B. Hobbs Certificate No. LS15652

Registered  
Indexed  
Indirect  
Recorded

### AUDITOR'S CERTIFICATE

Filed for record this Mailed 13th day of August 1981 at 1:00 P.M. In Book 6/6 of Monument at page 11 at the request of Hobbs & Associates - Chehalis, wa

Signature: J. J. Murringer by J. Davis County Auditor